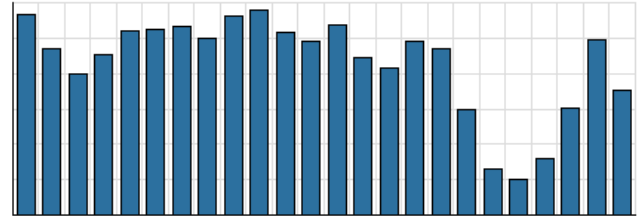


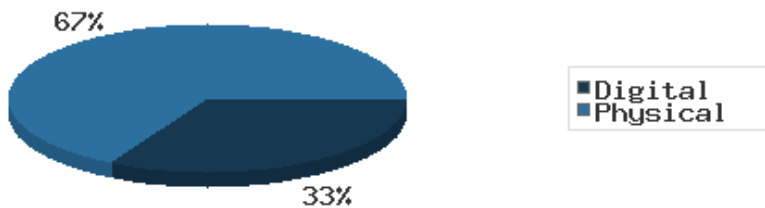
Monthly Stats Brief Narrative

Through September 2020, the number of patrons entering our buildings greatly decreased system-wide compared to this same time year-to-date the previous year. Combined physical and digital use of library materials greatly decreased year-to-date compared to 2019. About 6% of our registered cardholders checked out a physical item this past month, while about 2% of registered cardholders checked out a digital item.

District Total Checkouts Over 24 Months



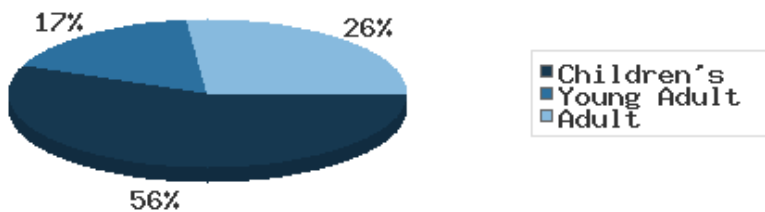
Digital vs. Physical Circulation YTD



Digital usage has comprised about 33% of total materials use year-to-date through September 2020, and digital usage somewhat increased from this time in 2019.

In September 2020, BDL patrons saved \$89,661.78 by checking out 7,771 physical items from the library. Our programming for all ages and our digital services further increase the library's value to the community, bringing the total estimated value to \$109,583.67.

Programs Offered in 2020 YTD



Compared to this time year-to-date 2019, the number of programs BDL offered has greatly decreased. Attendance at programs greatly increased over this same period.

See the full statistical report, starting on the next page, for details and more graphs. The most up-to-date stats are always available online and interactive at <https://www.BranchDistrictLibrary.org/stats>.

Attendance
September 2020

	BDL Monthly Total	BDL YTD	BDL Year End (Year-over-Year Change)				
			2019	2018	2017	2016	2015
Attendance	6,329	51,346 (-60%)	169,795 (-12%)	191,866 (-1%)	193,922 (-4%)	200,991 (+3%)	195,735 (+17%)
Hours Open	1,023.00	5,613.00 (-35%)	11,250.25 (-9%)	12,312.00 (+13%)	10,869.15 (-0%)	10,877.50 (+25%)	8,703.00 (+61%)
Number of Hours Scheduled Open Each Week (Tracking Since 1/2018)	237.00		241.00 (-2%)	245.00	0.00	0.00	0.00

Patrons
September 2020

	BDL Monthly Total	BDL YTD	BDL Year End (Year-over-Year Change)				
			2019	2018	2017	2016	2015
Population in our Service Area (Tracking Since 2018)	44,935	44,930 (avg) (-0%)	44,926 (avg)	44,926 (avg)	0 (avg)	0 (avg)	0 (avg)
Library Card Holders	21,968	21,144 (avg) (+4%)	20,773 (avg) (+3%)	20,166 (avg) (-21%)	25,685 (avg) (+3%)	24,899 (avg) (+4%)	23,974 (avg) (+5%)
Patrons Who Checked Out a Physical Item	1,395	1,096 (avg) (-50%)	1,890 (avg) (-0%)	1,896 (avg) (+0%)	1,887 (avg) (-7%)	2,030 (avg) (-2%)	2,069 (avg) (-2%)
New Library Card Holders Added	36	1,231 (+159%)	618 (-39%)	1,021 (+21%)	844 (-15%)	989 (-9%)	1,086 (-22%)
In-House Holds Filled for Our Library Card Holders	803	6,010 (-26%)	10,527 (-4%)	10,987 (-6%)	11,650 (+12%)	10,407 (+2%)	10,225 (+7%)
Active Hoopla Users (Began 2016)	310	332 (avg) (+13%)	260 (avg) (-1%)	262 (avg) (+39%)	189 (avg) (+47%)	129 (avg)	0 (avg)
Active OverDrive Users	216	239 (avg) (+14%)	203 (avg) (+3%)	197 (avg) (+26%)	156 (avg) (+16%)	134 (avg) (-7%)	144 (avg) (+7%)

Physical Collection
Tracking Item-Type Breakdown Since 8/2017
September 2020

	BDL Monthly Total	BDL YTD	BDL Year End (Year-over-Year Change)				
			2019	2018	2017	2016	2015
Physical Books and All other Print Materials in the Catalog	90,765		98,689 (-2%)	100,253 (-0%)	100,293	0	0
Physical Audiobooks in the Catalog	1,895		1,783 (-5%)	1,881 (+2%)	1,852	0	0
Physical Video Materials in the Catalog	11,196		11,460 (+8%)	10,579 (+1%)	10,519	0	0
Physical Music Recordings in the Catalog	178		159 (-53%)	337 (-2%)	345	0	0
TOTAL Physical Items in the Catalog	104,034		112,053 (-1%)	113,050 (+0%)	113,009 (-11%)	126,407 (-4%)	131,432 (+1%)

Digital Collection

Tracking Since 8/2017

September 2020

	BDL Monthly Total	BDL YTD	BDL Year End (Year-over-Year Change)				
			2019	2018	2017	2016	2015
Ebooks in All Digital Collections	464,496		370,666 (+21%)	306,595 (+33%)	230,178	0	0
Audiobooks in All Digital Collections	122,779		86,004 (+19%)	71,995 (+36%)	52,833	0	0
Video Materials in All Digital Collections	17,322		16,267 (+14%)	14,229 (-10%)	15,767	0	0
Music Recordings in All Digital Collections	271,403		271,614 (+13%)	239,705 (-14%)	280,259	0	0
Periodicals in All Digital Collections	3,668		0	0	0	0	0
TOTAL of All Digital Collections	879,668		744,551 (+18%)	632,524 (+9%)	579,037	0	0

Total Collection

Tracking Since 8/2017

September 2020

	BDL Monthly Total	BDL YTD	BDL Year End (Year-over-Year Change)				
			2019	2018	2017	2016	2015
Combined Physical Items	104,034		112,053 (-1%)	113,050 (+0%)	113,009 (-11%)	126,407 (-4%)	131,432 (+1%)
Combined Digital Collections	879,668		744,551 (+18%)	632,524 (+9%)	579,037	0	0
TOTAL of all Collections	983,702		856,604 (+15%)	745,574 (+8%)	692,046 (+447%)	126,407 (-4%)	131,432 (+1%)

Use of Physical Items

September 2020

	BDL Monthly Total	BDL YTD	BDL Year End (Year-over-Year Change)				
			2019	2018	2017	2016	2015
Checkouts of Cataloged Items	5,732	39,574 (-53%)	110,285 (-3%)	113,128 (-6%)	120,916 (+2%)	118,595 (-3%)	121,841 (-1%)
Renewals of Cataloged Items	836	4,974 (-52%)	13,490 (-1%)	13,607 (-8%)	14,804 (-4%)	15,480 (+0%)	15,434 (-4%)
Items Used in the Library But Not Checked Out	217	5,955 (+81%)	4,166 (+49%)	2,803 (-8%)	3,050 (+126%)	1,351 (+7,011%)	19 (-68%)
Checkouts of Uncataloged Items	54	822 (-69%)	3,294 (-16%)	3,904 (+38%)	2,839 (-38%)	4,578 (+4%)	4,385 (-5%)
Requests from BDL Patrons for Items at Other MeLCat Libraries, Actually Fulfilled	481	2,833 (-63%)	9,873 (+1%)	9,777 (+20%)	8,169 (+15%)	7,112 (+16%)	6,118 (+8%)
Requests from Other MeLCat Libraries for Items at BDL, Actually Fulfilled	451	2,130 (-65%)	7,582 (-23%)	9,810 (+25%)	7,867 (+11%)	7,068 (+46%)	4,855 (-10%)
TOTAL Use of Physical Items	7,771	56,288 (-51%)	148,690 (-3%)	153,029 (-3%)	157,645 (+2%)	154,184 (+1%)	152,652 (-1%)

Use of Digital Resources

September 2020

	BDL Monthly Total	BDL YTD	BDL Year End (Year-over-Year Change)				
			2019	2018	2017	2016	2015
OverDrive Checkouts	1,009	10,014 (+24%)	10,822 (+14%)	9,501 (+21%)	7,823 (+4%)	7,502 (+2%)	7,380 (+12%)
Hoopla Checkouts (Began 2016)	1,040	10,509 (+9%)	12,530 (-2%)	12,796 (+20%)	10,669 (+96%)	5,432	0
RB Digital Circulations (Began 2020)	41	784	0	0	0	0	0
All Other Digital Services	800	6,530 (-16%)	10,604 (+11%)	9,572 (-72%)	34,047 (-46%)	62,788 (+38%)	45,565 (+203%)
TOTAL Use of Digital Resources	2,890	27,837 (+9%)	33,956 (+7%)	31,869 (-39%)	52,539 (-31%)	75,722 (+43%)	52,945 (+145%)

Total Item Usage

September 2020

	BDL Monthly Total	BDL YTD	BDL Year End (Year-over-Year Change)				
			2019	2018	2017	2016	2015
Combined Checkouts of Physical Items	7,771	56,288 (-51%)	148,690 (-3%)	153,029 (-3%)	157,645 (+2%)	154,184 (+1%)	152,652 (-1%)
Combined Use of Digital Resources	2,890	27,837 (+9%)	33,956 (+7%)	31,869 (-39%)	52,539 (-31%)	75,722 (+43%)	52,945 (+145%)
TOTAL Uses of All BDL Items	10,661	84,125 (-40%)	182,646 (-1%)	184,898 (-12%)	210,184 (-9%)	229,906 (+12%)	205,597 (+16%)

Cataloging

September 2020

	BDL Monthly Total	BDL YTD	BDL Year End (Year-over-Year Change)				
			2019	2018	2017	2016	2015
Physical Items Added to the Catalog	1,407	7,519 (-2%)	9,719 (-12%)	11,056 (+0%)	11,009 (-1%)	11,091 (+29%)	8,582 (+40%)
Physical Items Deleted from the Catalog	450	15,779 (+92%)	10,769 (-2%)	10,941 (-55%)	24,366 (+53%)	15,968 (+84%)	8,668 (+40%)

Reference Questions

September 2020

	BDL Monthly Total	BDL YTD	BDL Year End (Year-over-Year Change)				
			2019	2018	2017	2016	2015
General Reference Questions in Person	545	3,266 (-52%)	8,748 (+32%)	6,641 (-12%)	7,537 (+20%)	6,285 (+124%)	2,806 (-0%)
Questions via Telephone Calls	442	2,650 (-14%)	4,111 (+6%)	3,866 (-24%)	5,079 (+10%)	4,622 (+60%)	2,885 (+0%)
Reference Questions Delivered Online	31	172 (-30%)	281 (+85%)	152 (-35%)	233 (-23%)	304 (+34%)	227 (+77%)
In-Person Questions on Computer or Internet Use	327	2,383 (-60%)	7,505 (+6%)	7,068 (-3%)	7,285 (+11%)	6,568 (+18%)	5,551 (+36%)
In-Person Questions about Our Online Databases	23	83 (-74%)	349 (-15%)	409 (+13%)	363 (+114%)	170 (+85%)	92 (-24%)
In-Person Tax Form Questions	3	285 (-12%)	326 (-37%)	518 (+5%)	493 (+4%)	473 (-18%)	579 (+3%)
TOTAL of All Reference Questions	1,371	8,839 (-47%)	21,320 (+14%)	18,654 (-11%)	20,990 (+14%)	18,422 (+52%)	12,140 (+15%)

Notary Services
Began 9/2017 at Coldwater Only

September 2020

	BDL Monthly Total	BDL YTD	BDL Year End (Year-over-Year Change)				
			2019	2018	2017	2016	2015
Patrons Who Used our Free Notary Services	10	32 (-61%)	95 (+44%)	66 (+371%)	14	0	0
Documents Notarized	14	42 (-61%)	124 (+85%)	67 (+253%)	19	0	0

MeLCat
September 2020

	BDL Monthly Total	BDL YTD	BDL Year End (Year-over-Year Change)				
			2019	2018	2017	2016	2015
Requests from BDL Patrons for Items at Other MeLCat Libraries	535	3,138 (-62%)	10,538 (+1%)	10,462 (+20%)	8,699 (+14%)	7,643 (+5%)	7,280 (+9%)
Requests from BDL Patrons for Items at Other MeLCat Libraries, Actually Fulfilled	481	2,833 (-63%)	9,873 (+1%)	9,777 (+20%)	8,169 (+15%)	7,112 (+16%)	6,118 (+8%)
Requests from Other MeLCat Libraries for Items at BDL	508	2,824 (-57%)	8,405 (-18%)	10,296 (+29%)	7,994 (+13%)	7,096 (+18%)	5,989 (-10%)
Requests from Other MeLCat Libraries for Items at BDL, Actually Fulfilled	451	2,130 (-65%)	7,582 (-23%)	9,810 (+25%)	7,867 (+11%)	7,068 (+46%)	4,855 (-10%)

Programs Held
September 2020

	BDL Monthly Total	BDL YTD	BDL Year End (Year-over-Year Change)				
			2019	2018	2017	2016	2015
Juvenile Programs Held	18	375 (-34%)	536 (-27%)	730 (+1%)	720 (+19%)	604 (+5%)	575 (+19%)
Young Adult Programs Held	5	114 (-39%)	264 (-22%)	338 (+41%)	239 (+47%)	163 (+8%)	151 (+20%)
Adult Programs Held	8	176 (+54%)	167 (+23%)	136 (-7%)	146 (-34%)	220 (+40%)	157 (+26%)
Juvenile Summer Reading Events Held	0	0	93 (-18%)	114 (+20%)	95 (+7%)	89 (+6%)	84 (+8%)
Young Adult Summer Reading Events Held	0	0	53 (+8%)	49 (-14%)	57 (+97%)	29 (-66%)	85 (+183%)
Adult Summer Reading Events Held	0	0	17 (+467%)	3	0	3 (-40%)	5 (+25%)
Computer Classes Held	0	0	81 (+305%)	20 (-9%)	22 (+57%)	14 (-36%)	22 (-8%)
TOTAL of All Programs	31	665 (-42%)	1,211 (-13%)	1,390 (+9%)	1,279 (+14%)	1,122 (+4%)	1,079 (+24%)

Program Attendance

September 2020

	BDL Monthly Total	BDL YTD	BDL Year End (Year-over-Year Change)				
			2019	2018	2017	2016	2015
Attendees at Juvenile Programs	694	19,470 (+83%)	10,939 (-30%)	15,725 (+2%)	15,351 (+48%)	10,371 (+23%)	8,415 (+7%)
Attendees at Young Adult Programs	51	2,963 (+74%)	2,106 (-35%)	3,218 (-15%)	3,806 (+276%)	1,011 (+14%)	884 (+38%)
Attendees at Adult Programs	253	12,601 (+579%)	2,627 (+33%)	1,970 (-0%)	1,979 (-3%)	2,048 (-5%)	2,157 (+65%)
Attendees at Juvenile Summer Reading Events	0	0	1,725 (-55%)	3,864 (+24%)	3,116 (-20%)	3,904 (+56%)	2,499 (-21%)
Attendees at Young Adult Summer Reading Events	0	0	251 (-25%)	333 (-50%)	671 (+127%)	295 (+14%)	259 (-16%)
Attendees at Adult Summer Reading Events	0	0	310 (+265%)	85	0	21 (-73%)	77 (-31%)
Attendees at Computer Classes	0	0	26 (+30%)	20 (-5%)	21 (+75%)	12 (-59%)	29 (+4%)
TOTAL of All Program Attendance	998	35,034 (+85%)	17,984 (-29%)	25,215 (+1%)	24,944 (+41%)	17,662 (+23%)	14,320 (+7%)

Summer Reading Overview

September 2020

	BDL Monthly Total	BDL YTD	BDL Year End (Year-over-Year Change)				
			2019	2018	2017	2016	2015
Juveniles Signed Up for Summer Reading Program	0	91 (-87%)	345 (-54%)	747 (-35%)	1,153 (+19%)	967 (+13%)	859
Young Adults Signed up for Summer Reading Program	0	29 (-78%)	90 (-76%)	378 (-2%)	385 (+241%)	113 (-64%)	311
Adults Signed Up for Summer Reading Program	0	33 (-79%)	159 (-36%)	248 (+112%)	117 (+36%)	86 (+1%)	85
Juveniles who Completed Summer Reading Program	0	91 (-76%)	203 (-22%)	260 (-50%)	518 (+13%)	459 (-10%)	512
Young Adults who Completed Summer Reading Program	0	29 (-63%)	60 (-56%)	135 (-50%)	268 (+332%)	62 (-49%)	122
Adults who Completed Summer Reading Program	0	33 (-72%)	118 (-28%)	165 (+72%)	96 (+60%)	60 (+7%)	56
Juvenile Summer Reading Events Held	0	0	93 (-18%)	114 (+20%)	95 (+7%)	89 (+6%)	84 (+8%)
Young Adult Summer Reading Events Held	0	0	53 (+8%)	49 (-14%)	57 (+97%)	29 (-66%)	85 (+183%)
Adult Summer Reading Events Held	0	0	17 (+467%)	3	0	3 (-40%)	5 (+25%)
Attendees at Juvenile Summer Reading Events	0	0	1,725 (-55%)	3,864 (+24%)	3,116 (-20%)	3,904 (+56%)	2,499 (-21%)
Attendees at Young Adult Summer Reading Events	0	0	251 (-25%)	333 (-50%)	671 (+127%)	295 (+14%)	259 (-16%)
Attendees at Adult Summer Reading Events	0	0	310 (+265%)	85	0	21 (-73%)	77 (-31%)

Summer Reading Program Signups

September 2020

	BDL Monthly Total	BDL YTD	BDL Year End (Year-over-Year Change)				
			2019	2018	2017	2016	2015
Juveniles Signed Up for Summer Reading Program	0	91 (-87%)	345 (-54%)	747 (-35%)	1,153 (+19%)	967 (+13%)	859
Young Adults Signed up for Summer Reading Program	0	29 (-78%)	90 (-76%)	378 (-2%)	385 (+241%)	113 (-64%)	311
Adults Signed Up for Summer Reading Program	0	33 (-79%)	159 (-36%)	248 (+112%)	117 (+36%)	86 (+1%)	85
TOTAL Summer Reading Program Signups	0	153 (-85%)	594 (-57%)	1,373 (-17%)	1,655 (+42%)	1,166 (-7%)	1,255

Summer Reading Program Completions

September 2020

	BDL Monthly Total	BDL YTD	BDL Year End (Year-over-Year Change)				
			2019	2018	2017	2016	2015
Juveniles who Completed Summer Reading Program	0	91 (-76%)	203 (-22%)	260 (-50%)	518 (+13%)	459 (-10%)	512
Young Adults who Completed Summer Reading Program	0	29 (-63%)	60 (-56%)	135 (-50%)	268 (+332%)	62 (-49%)	122
Adults who Completed Summer Reading Program	0	33 (-72%)	118 (-28%)	165 (+72%)	96 (+60%)	60 (+7%)	56
TOTAL Summer Reading Program Completions	0	153 (-74%)	381 (-32%)	560 (-37%)	882 (+52%)	581 (-16%)	690

Library-Provided Computer Services

September 2020

	BDL Monthly Total	BDL YTD	BDL Year End (Year-over-Year Change)				
			2019	2018	2017	2016	2015
One-hour sessions on Library Wifi	20,470	216,318 (-40%)	474,750 (+2%)	465,219 (+9%)	425,714 (+4%)	410,437 (+17%)	351,423 (+18%)
Desktop, Laptop, and Tablet Computers Available for Public Use	88		88 (-1%)	89 (+22%)	73	73	73
Sessions on Library-Provided Computers	718	8,310 (-69%)	34,577 (-24%)	45,687 (+3%)	44,181 (+6%)	41,513 (-11%)	46,405 (+6%)
Hours Library-Provided Computers Used (Tracking Since 2018)	398.23	5,446.22 (-71%)	24,280.36 (-2%)	24,701.55	0.00	0.00	0.00
Desktop, Laptop, and Tablet Computers Available for Staff Use	52		52 (+4%)	50 (+22%)	41	41	41

Website Stats

September 2020

	BDL Monthly Total	BDL YTD	BDL Year End (Year-over-Year Change)				
			2019	2018	2017	2016	2015
Monthly Website Sessions	3,090	28,848 (-36%)	58,161 (+28%)	45,594 (-38%)	73,326 (-2%)	75,139 (+3%)	72,706 (+6%)
Monthly Website Page Views	7,597	66,123 (-35%)	129,778 (+9%)	118,634 (-33%)	177,799 (-2%)	182,084 (+7%)	169,630 (+4%)

Faxes, Prints, and Sales

September 2020

	BDL Monthly Total	BDL YTD	BDL Year End (Year-over-Year Change)				
			2019	2018	2017	2016	2015
Fax Pages Received	9	122 (-55%)	350 (-16%)	419 (+61%)	260 (+19%)	219 (+27%)	173 (+3%)
Fax Pages Sent	667	3,076 (-59%)	9,524 (+3%)	9,249 (+138%)	3,879 (+123%)	1,741 (-7%)	1,882 (+39%)
Free Prints for Job Seekers	122	909 (-59%)	2,796 (-23%)	3,631 (+16%)	3,128 (+9%)	2,878 (+23%)	2,335 (-23%)
Black and White Patron Prints (Tracking Since 6/2016)	4,145	25,668 (-56%)	75,818 (-6%)	81,016 (+7%)	75,606 (+113%)	35,561	0
Color Patron Prints (Tracking Since 6/2016)	491	3,362 (-60%)	11,299 (-8%)	12,285 (+20%)	10,253 (+154%)	4,036	0
Flash Drives Sold (Tracking Since 6/2016)	2	14 (-56%)	37 (-10%)	41 (-27%)	56 (+4%)	54	0
Earbuds Sold (Tracking Since 6/2016)	18	118 (-68%)	462 (-14%)	538 (+29%)	416 (+151%)	166	0

Notes

1. Includes free student prints at Sherwood

2. Includes free student prints at Union Twp.

Fines and Fees
Overdue Fines Dropped in 2017
September 2020

	BDL Monthly Total	BDL YTD	BDL Year End (Year-over-Year Change)				
			2019	2018	2017	2016	2015
Fines and Fees Payments Received	\$ 285.48	\$ 1,280.54 (-47%)	\$ 3,092.62 (+28%)	\$ 2,412.73 (-68%)	\$ 7,628.31 (-24%)	\$ 10,062.96 (-30%)	\$ 14,448.76 (-3%)
Outstanding Fines and Fees	\$ 53,137.68		55,588.42 (-0%)	55,850.27 (-34%)	84,232.33 (-63%)	228,102.90 (+3%)	221,076.26 (+5%)

Debt Collections
Unique Management Services, Inc.
Tracking Since 2014
September 2020

	BDL Monthly Total	BDL YTD	BDL Year End (Year-over-Year Change)				
			2019	2018	2017	2016	2015
Fine Payments as a Result of Collection Agency's Efforts	\$ 0.00	\$ 0.00	\$ 268.00 (-94%)	\$ 4,183.45 (+1,727%)	\$ 229.00 (-76%)	\$ 947.13 (+16%)	\$ 818.48 (+1%)
Library Materials Returned as a Result of Collection Agency's Efforts	\$ 0.00	\$ 0.00	\$ 0.00	\$ 462.00 (-48%)	\$ 888.95 (-33%)	\$ 1,317.93 (-2%)	\$ 1,346.89 (-28%)
What We Paid Collection Agency for Their Services	\$ 0.00	\$ 0.00	\$ 134.10 (-75%)	\$ 528.66 (-5%)	\$ 558.08 (-45%)	\$ 1,022.23 (-3%)	\$ 1,051.42 (+40%)

Value to Our Service Area
 Visit <https://www.BranchDistrictLibrary.org/value>
 to learn how we determine these numbers.

September 2020

	BDL Monthly Total	BDL YTD	BDL Year End (Year-over-Year Change)				
			2019	2018	2017	2016	2015
Value from Physical Item Checkouts	\$ 89,661.78	\$ 617,597.10 (-55%)	\$ 1,755,554.08 (-7%)	\$ 1,888,907.75 (-12%)	\$ 2,135,671.28 (+0%)	\$ 2,132,387.79 (-2%)	\$ 2,167,140.68 (+0%)
Value from Attending Programs (Tracking Since 1/2018)	\$ 4,990.00	\$ 78,450.00 (-15%)	\$ 118,485.00 (-6%)	\$ 125,795.00	\$ 0.00	\$ 0.00	\$ 0.00
Value from Fax Service (Tracking Since 1/2018)	\$ 676.00	\$ 3,170.00 (-61%)	\$ 10,205.00 (+6%)	\$ 9,668.00	\$ 0.00	\$ 0.00	\$ 0.00
Value from Employment Prints (Tracking Since 1/2018)	\$ 18.30	\$ 135.45 (-59%)	\$ 419.40 (-23%)	\$ 544.65	\$ 0.00	\$ 0.00	\$ 0.00
Value from Notary Services (Tracking Since 1/2018)	\$ 50.00	\$ 155.00 (-62%)	\$ 475.00 (+44%)	\$ 330.00	\$ 0.00	\$ 0.00	\$ 0.00
Value from Digital Services (Tracking Since 1/2018)	\$ 11,560.00	\$ 110,220.00 (+8%)	\$ 135,824.00 (+7%)	\$ 127,476.00	\$ 0.00	\$ 0.00	\$ 0.00
Value from Using Library Computers (Tracking Since 1/2018)	\$ 1,194.69	\$ 16,338.66 (-71%)	\$ 72,841.08 (-2%)	\$ 74,104.66	\$ 0.00	\$ 0.00	\$ 0.00
Value from Using Library Wifi (Tracking Since 1/2018)	\$ 1,432.90	\$ 15,142.26 (-40%)	\$ 33,232.50 (+2%)	\$ 32,565.33	\$ 0.00	\$ 0.00	\$ 0.00
TOTAL Value of Free Library Services	\$ 109,583.67	\$ 841,208.47 (-49%)	\$ 2,127,036.06 (-6%)	\$ 2,259,391.39 (+6%)	\$ 2,135,671.28 (+0%)	\$ 2,132,387.79 (-2%)	\$ 2,167,140.68 (+0%)

Materials Expenditures

Tracking since 2018

September 2020

	BDL Monthly Total	BDL YTD	BDL Year End (Year-over-Year Change)				
			2019	2018	2017	2016	2015
Amount Spent on Books	\$ 14,408.93	\$ 54,396.69 (-7%)	\$ 76,878.30 (-18%)	\$ 93,763.50	\$ 0.00	\$ 0.00	\$ 0.00
Amount Spent on Periodicals	\$ 690.00	\$ 920.29 (-13%)	\$ 5,663.99 (-20%)	\$ 7,085.59	\$ 0.00	\$ 0.00	\$ 0.00
Amount Spent on Audiovisual Materials	\$ 2,524.37	\$ 10,893.09 (-3%)	\$ 15,009.96 (-17%)	\$ 17,998.47	\$ 0.00	\$ 0.00	\$ 0.00
Amount Spent on Digital Resources	\$ 2,001.92	\$ 24,309.70 (+21%)	\$ 28,412.62 (-35%)	\$ 43,798.90	\$ 0.00	\$ 0.00	\$ 0.00
TOTAL Spent on All Library Materials	\$ 19,625.22	\$ 90,519.77 (-1%)	\$ 125,964.87 (-23%)	\$ 162,646.46	\$ 0.00	\$ 0.00	\$ 0.00

Other Expenditures

Tracking since 2018

September 2020

	BDL Monthly Total	BDL YTD	BDL Year End (Year-over-Year Change)				
			2019	2018	2017	2016	2015
Total Materials Expenditures	\$ 19,625.22	\$ 90,519.77 (-1%)	\$ 125,964.87 (-23%)	\$ 162,646.46	\$ 0.00	\$ 0.00	\$ 0.00
Total Staff Expenditures	\$ 72,743.72	\$ 700,412.71 (-22%)	\$ 1,172,756.92 (-20%)	\$ 1,469,560.33	\$ 0.00	\$ 0.00	\$ 0.00
Expenditures in other categories	\$ 17,046.66	\$ 308,268.68 (+12%)	\$ 353,231.25 (-16%)	\$ 422,747.74	\$ 0.00	\$ 0.00	\$ 0.00
TOTAL Expenditures in all Categories	\$ 130,645.92	\$ 1,293,144.65 (-5%)	\$ 1,797,240.67 (-13%)	\$ 2,054,954.53	\$ 0.00	\$ 0.00	\$ 0.00

Staffing

September 2020

	BDL Monthly Total	BDL YTD	BDL Year End (Year-over-Year Change)				
			2019	2018	2017	2016	2015
Total BDL Staff	34	36 (avg) (-5%)	37 (avg) (-8%)	40 (avg) (+5%)	37 (avg) (+9%)	34 (avg) (+17%)	29 (avg) (-3%)
BDL Staff with MLS Degree	5	5 (avg) (+25%)	5 (avg) (-33%)	6 (avg) (+20%)	5 (avg) (+150%)	3 (avg)	2 (avg)
Worked Full-Time Equivalents	24.13	25.47 (avg) (-4%)	25.78 (avg) (-4%)	26.92 (avg) (+8%)	24.91 (avg) (+41%)	17.90 (avg) (+13%)	15.75 (avg) (-6%)
Hours of Specialized Training for Staff (Tracking Since 1/2019)	105	764 (+283%)	534	0	0	0	0
Hours Volunteers Worked at the Library (Tracking Since 1/2019)	0	39 (-96%)	1,065	0	0	0	0

Outreach Services

Began 2018

September 2020

	BDL Monthly Total	BDL YTD	BDL Year End (Year-over-Year Change)				
			2019	2018	2017	2016	2015
Number of Patrons Served by Outreach Services	3	16 (-75%)	70 (-8%)	76 (+2,433%)	3	0	0
Number of Items Delivered to Outreach Patrons	13	84 (-59%)	220 (-64%)	606 (+2,231%)	26	0	0

Coldwater Branch Heritage Room

Stats part of Coldwater Branch totals above; shown here for convenience.

September 2020

	Heritage Room	BDL YTD	BDL Year End (Year-over-Year Change)				
			2019	2018	2017	2016	2015
Heritage Room Attendance	4	105 (-70%)	484 (-34%)	736 (+12%)	658 (-7%)	705 (+51%)	468 (+50%)
In-Person Reference Questions	0	80 (-75%)	412 (-42%)	708 (+29%)	550 (+664%)	72 (+140%)	30 (-27%)
Reference Telephone Calls	6	60 (-67%)	232 (-16%)	277 (-36%)	433 (+15%)	376 (+83%)	206 (+145%)
Online Reference Questions	10	34 (-37%)	65 (+8%)	60 (-5%)	63 (-24%)	83 (+8%)	77 (+79%)

Coldwater Branch Kids' Place

Stats part of Coldwater Branch totals above; shown here for convenience.
Tracking separately since April 2019.

September 2020

	Kids' Place	BDL YTD	BDL Year End (Year-over-Year Change)				
			2019	2018	2017	2016	2015
Kids' Place Attendance	89	2,231 (-68%)	9,710	0	0	0	0
In-Person Reference Questions	17	169 (-59%)	575	0	0	0	0
Reference Telephone Calls	12	96 (-44%)	224	0	0	0	0
Online Reference Questions	0	0	0	0	0	0	0

Coldwater Branch Teen Space

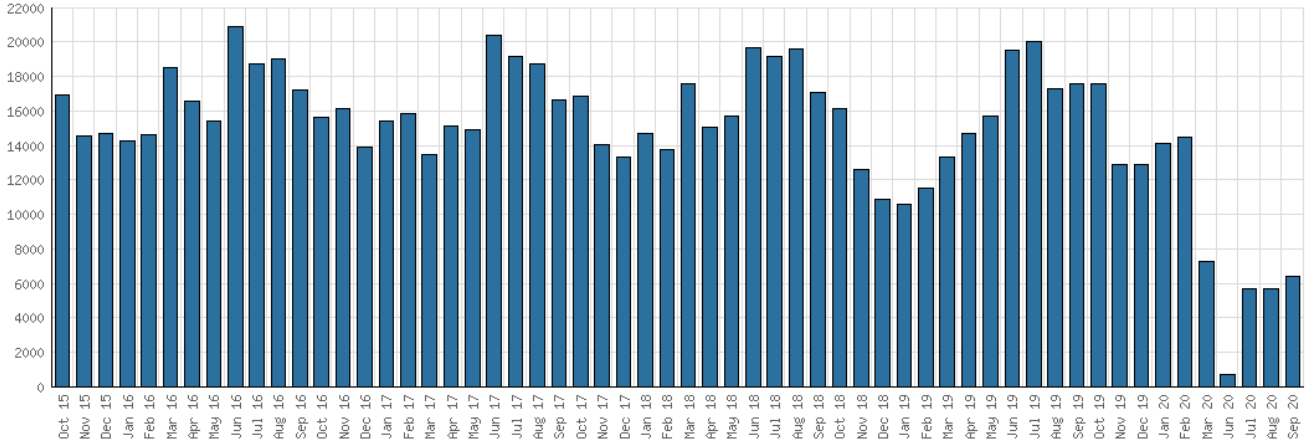
Stats part of Coldwater Branch totals above; shown here for convenience.
Tracking separately since April 2019.

September 2020

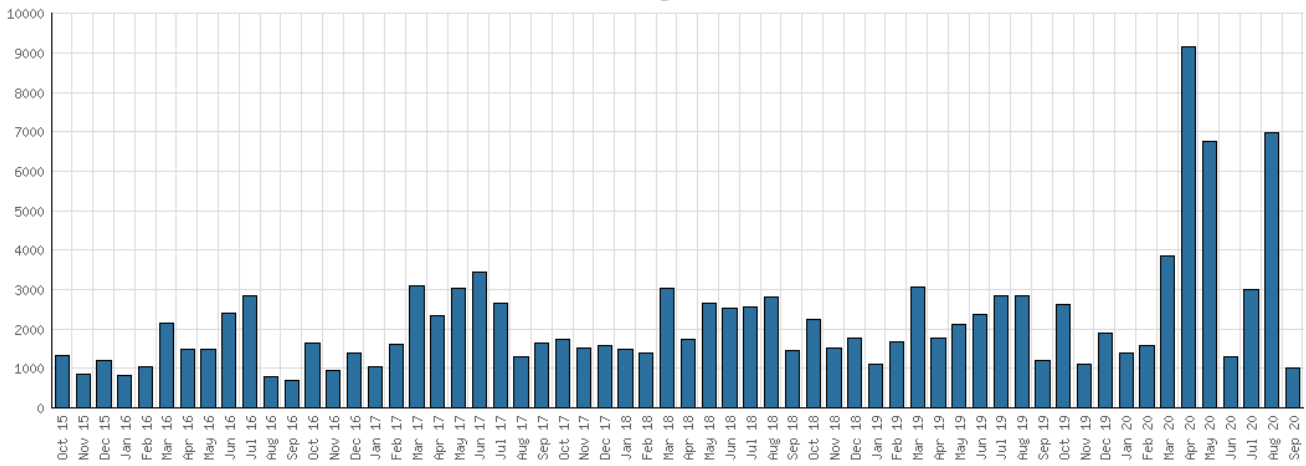
	Teen Space	BDL YTD	BDL Year End (Year-over-Year Change)				
			2019	2018	2017	2016	2015
Teen Space Attendance	23	797 (-78%)	4,172	0	0	0	0
In-Person Reference Questions	0	4 (-96%)	93	0	0	0	0
Reference Telephone Calls	0	0	0	0	0	0	0
Online Reference Questions	0	0	0	0	0	0	0

Selected Graphs 5-year Monthly Trends

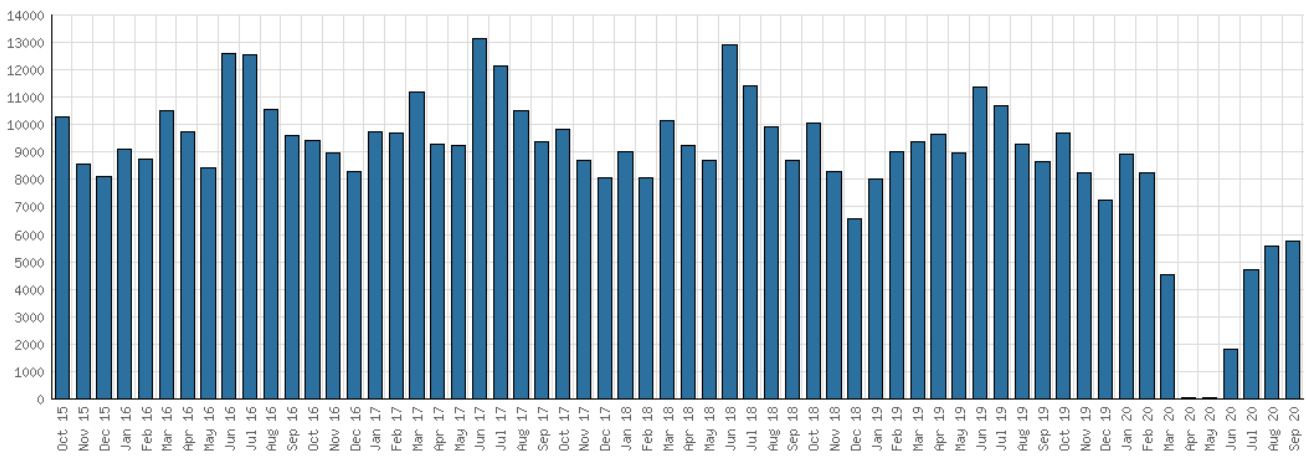
District Attendance



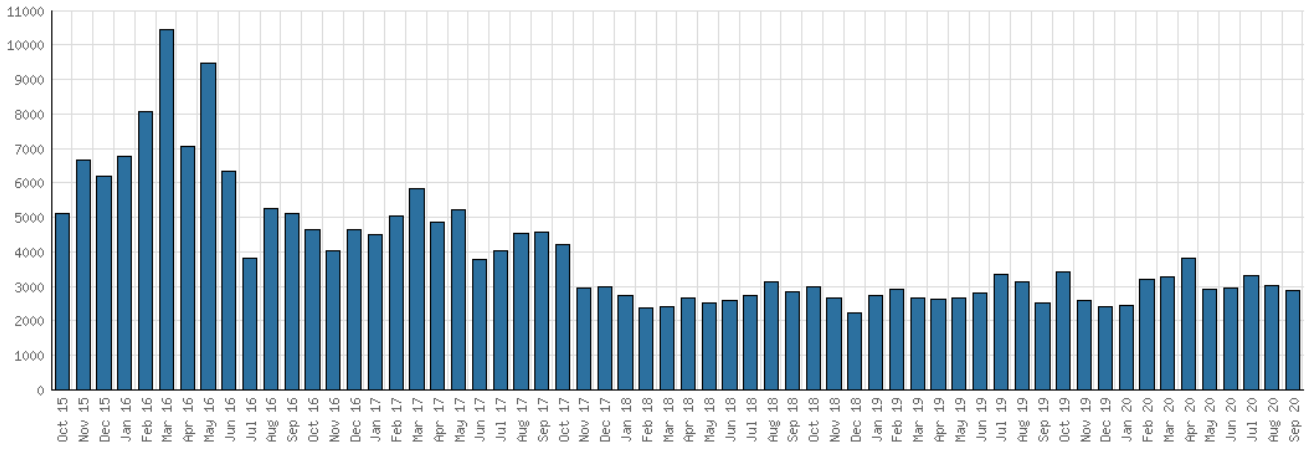
District Program Attendance



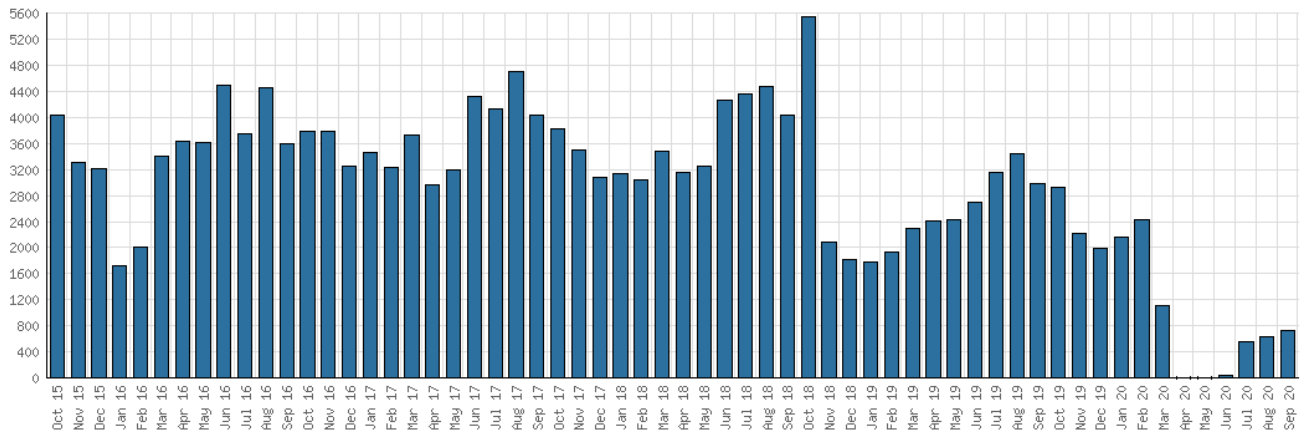
District Physical Checkouts



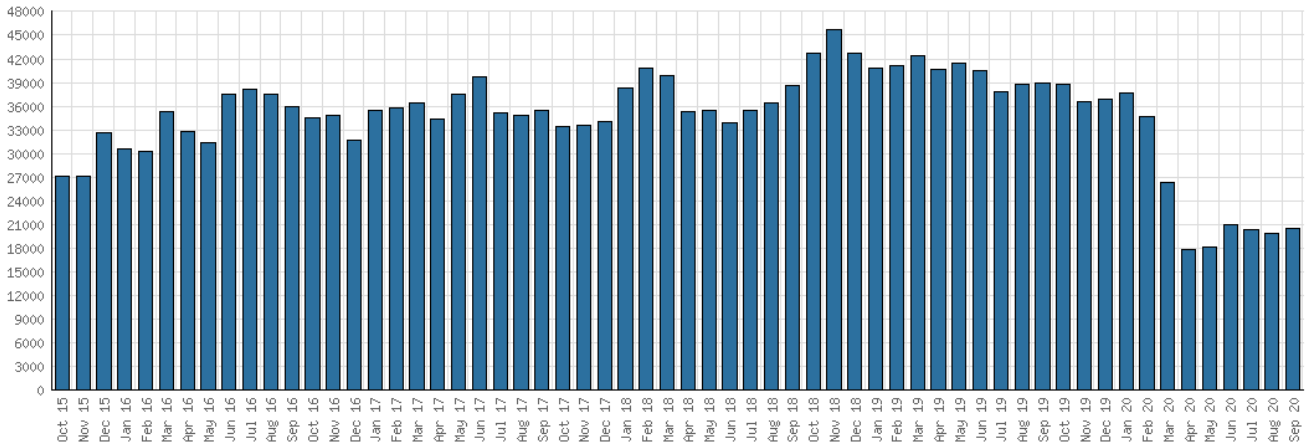
District Digital Usage



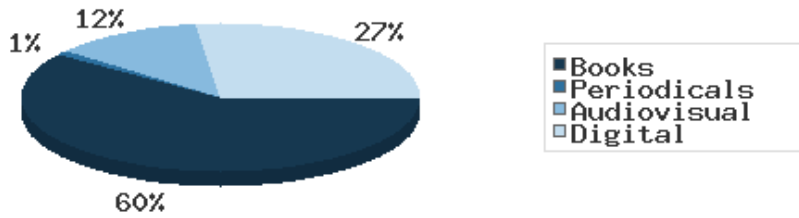
District Use of Library-Provided Computers



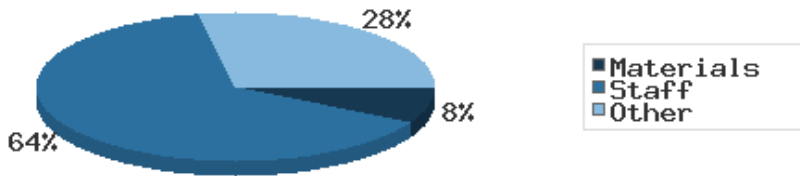
District One-Hour Sessions on Library Wifi



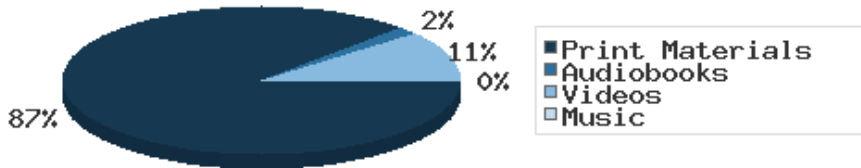
Year-to-Date Materials Expenditures



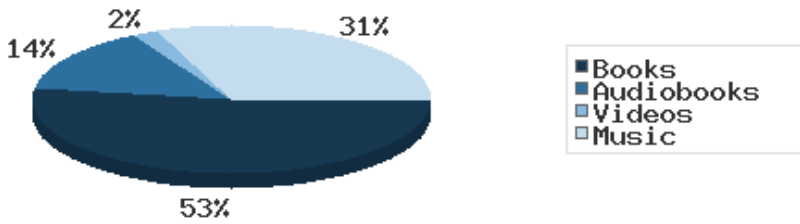
YTD Expenditures in all Categories



Physical Collection



Digital Collection



YTD Usage Breakdown of Digital Services

