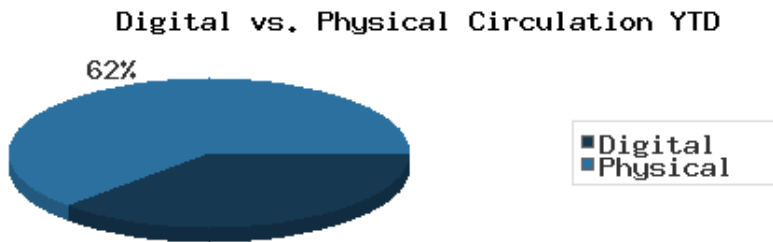
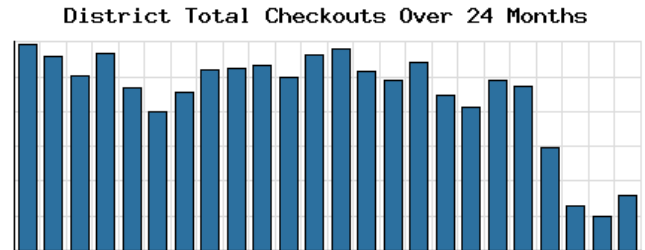


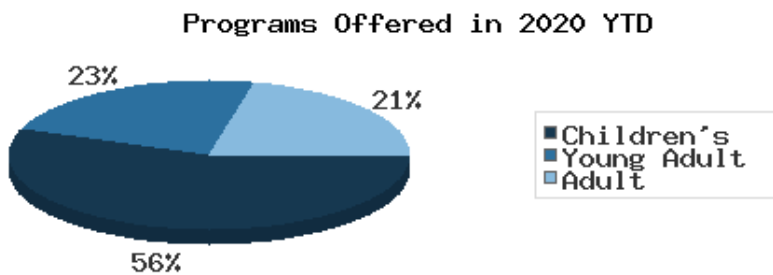
Monthly Stats Brief Narrative

Through June 2020, the number of patrons entering our buildings greatly decreased system-wide compared to this same time year-to-date the previous year. Combined physical and digital use of library materials greatly decreased year-to-date compared to 2019. About 2% of our registered cardholders checked out a physical item this past month, while about 3% of registered cardholders checked out a digital item.



Digital usage has comprised about 38% of total materials use year-to-date through June 2020, and digital usage increased from this time in 2019.

In June 2020, BDL patrons saved \$26,226.65 by checking out 1,893 physical items from the library. Our programming for all ages and our digital services further increase the library's value to the community, bringing the total estimated value to \$46,066.00.



Compared to this time year-to-date 2019, the number of programs BDL offered has greatly decreased. Attendance at programs greatly increased over this same period.

The library was able to return to business on June 8, after the stay-at-home order was lifted due to Covid-19. As part of our reopening plan curbside pickup, by appointment, was offered for 2 weeks before opening our doors to the public on June 29. Programs were held virtually using the website and various social media platforms. Popular service MeLCat is still not available.

See the full statistical report, starting on the next page, for details and more graphs. The most up-to-date stats are always available online and interactive at <https://www.BranchDistrictLibrary.org/stats>.

Attendance

June 2020

	BDL Monthly Total	BDL YTD	BDL Year End (Year-over-Year Change)				
			2019	2018	2017	2016	2015
Attendance	688	33,905 (-58%)	169,795 (-12%)	191,866 (-1%)	193,922 (-4%)	200,991 (+3%)	195,735 (+17%)
Hours Open	78.00 ¹	2,549.00 (-54%)	11,250.25 (-9%)	12,312.00 (+13%)	10,869.15 (-0%)	10,877.50 (+25%)	8,703.00 (+61%)
Number of Hours Scheduled Open Each Week (Tracking Since 1/2018)	238.00		241.00 (-2%)	245.00	0.00	0.00	0.00

Notes

1. Only hours where the public were able to enter the building and receive library services are counted. These totals do not reflect our 2 weeks of Curbside Service.

Patrons

June 2020

	BDL Monthly Total	BDL YTD	BDL Year End (Year-over-Year Change)				
			2019	2018	2017	2016	2015
Population in our Service Area (Tracking Since 2018)	44,935	44,928 (avg) (-1%)	44,926 (avg)	44,926 (avg)	0 (avg)	0 (avg)	0 (avg)
Library Card Holders	20,946	20,903 (avg) (+3%)	20,773 (avg) (+3%)	20,166 (avg) (-21%)	25,685 (avg) (+3%)	24,899 (avg) (+4%)	23,974 (avg) (+5%)
Patrons Who Checked Out a Physical Item	488	1,012 (avg) (-53%)	1,890 (avg) (-0%)	1,896 (avg) (+0%)	1,887 (avg) (-7%)	2,030 (avg) (-2%)	2,069 (avg) (-2%)
New Library Card Holders Added	16	192 (-40%)	618 (-39%)	1,021 (+21%)	844 (-15%)	989 (-9%)	1,086 (-22%)
In-House Holds Filled for Our Library Card Holders	717	3,316 (-38%)	10,527 (-4%)	10,987 (-6%)	11,650 (+12%)	10,407 (+2%)	10,225 (+7%)
Active Hoopla Users (Began 2016)	332	337 (avg) (+15%)	260 (avg) (-1%)	262 (avg) (+39%)	189 (avg) (+47%)	129 (avg)	0 (avg)
Active OverDrive Users	245	245 (avg) (+20%)	203 (avg) (+3%)	197 (avg) (+26%)	156 (avg) (+16%)	134 (avg) (-7%)	144 (avg) (+7%)

Physical Collection

Tracking Item-Type Breakdown Since 8/2017

June 2020

	BDL Monthly Total	BDL YTD	BDL Year End (Year-over-Year Change)				
			2019	2018	2017	2016	2015
Physical Books and All other Print Materials in the Catalog	93,734		98,689 (-2%)	100,253 (-0%)	100,293	0	0
Physical Audiobooks in the Catalog	1,870		1,783 (-5%)	1,881 (+2%)	1,852	0	0
Physical Video Materials in the Catalog	11,542		11,460 (+8%)	10,579 (+1%)	10,519	0	0
Physical Music Recordings in the Catalog	172		159 (-53%)	337 (-2%)	345	0	0
TOTAL Physical Items in the Catalog	107,271		112,053 (-1%)	113,050 (+0%)	113,009 (-11%)	126,407 (-4%)	131,432 (+1%)

Digital Collection

Tracking Since 8/2017

June 2020

	BDL Monthly Total	BDL YTD	BDL Year End (Year-over-Year Change)				
			2019	2018	2017	2016	2015
Ebooks in All Digital Collections	442,503		370,666 (+21%)	306,595 (+33%)	230,178	0	0
Audiobooks in All Digital Collections	99,589		86,004 (+19%)	71,995 (+36%)	52,833	0	0
Video Materials in All Digital Collections	17,115		16,267 (+14%)	14,229 (-10%)	15,767	0	0
Music Recordings in All Digital Collections	268,196		271,614 (+13%)	239,705 (-14%)	280,259	0	0
Periodicals in All Digital Collections	3,668		0	0	0	0	0
TOTAL of All Digital Collections	831,071		744,551 (+18%)	632,524 (+9%)	579,037	0	0

Total Collection

Tracking Since 8/2017

June 2020

	BDL Monthly Total	BDL YTD	BDL Year End (Year-over-Year Change)				
			2019	2018	2017	2016	2015
Combined Physical Items	107,271		112,053 (-1%)	113,050 (+0%)	113,009 (-11%)	126,407 (-4%)	131,432 (+1%)
Combined Digital Collections	831,071		744,551 (+18%)	632,524 (+9%)	579,037	0	0
TOTAL of all Collections	938,342		856,604 (+15%)	745,574 (+8%)	692,046 (+447%)	126,407 (-4%)	131,432 (+1%)

Use of Physical Items

June 2020

	BDL Monthly Total	BDL YTD	BDL Year End (Year-over-Year Change)				
			2019	2018	2017	2016	2015
Checkouts of Cataloged Items	1,790	23,587 (-58%)	110,285 (-3%)	113,128 (-6%)	120,916 (+2%)	118,595 (-3%)	121,841 (-1%)
Renewals of Cataloged Items	26	2,624 (-61%)	13,490 (-1%)	13,607 (-8%)	14,804 (-4%)	15,480 (+0%)	15,434 (-4%)
Items Used in the Library But Not Checked Out	22	902 (-60%)	4,166 (+49%)	2,803 (-8%)	3,050 (+126%)	1,351 (+7,011%)	19 (-68%)
Checkouts of Uncataloged Items	55	626 (-60%)	3,294 (-16%)	3,904 (+38%)	2,839 (-38%)	4,578 (+4%)	4,385 (-5%)
Requests from BDL Patrons for Items at Other MeLCat Libraries, Actually Fulfilled	0	1,890 (-64%)	9,873 (+1%)	9,777 (+20%)	8,169 (+15%)	7,112 (+16%)	6,118 (+8%)
Requests from Other MeLCat Libraries for Items at BDL, Actually Fulfilled	0	1,287 (-69%)	7,582 (-23%)	9,810 (+25%)	7,867 (+11%)	7,068 (+46%)	4,855 (-10%)
TOTAL Use of Physical Items	1,893	30,916 (-60%)	148,690 (-3%)	153,029 (-3%)	157,645 (+2%)	154,184 (+1%)	152,652 (-1%)

Use of Digital Resources

June 2020

	BDL Monthly Total	BDL YTD	BDL Year End (Year-over-Year Change)				
			2019	2018	2017	2016	2015
OverDrive Checkouts	1,117	6,834 (+30%)	10,822 (+14%)	9,501 (+21%)	7,823 (+4%)	7,502 (+2%)	7,380 (+12%)
Hoopla Checkouts (Began 2016)	1,109	7,240 (+8%)	12,530 (-2%)	12,796 (+20%)	10,669 (+96%)	5,432	0
RB Digital Circulations (Began 2020)	61	542	0	0	0	0	0
All Other Digital Services	650	3,973 (-13%)	10,604 (+11%)	9,572 (-72%)	34,047 (-46%)	62,788 (+38%)	45,565 (+203%)
TOTAL Use of Digital Resources	2,937	18,589 (+13%)	33,956 (+7%)	31,869 (-39%)	52,539 (-31%)	75,722 (+43%)	52,945 (+145%)

Total Item Usage

June 2020

	BDL Monthly Total	BDL YTD	BDL Year End (Year-over-Year Change)				
			2019	2018	2017	2016	2015
Combined Checkouts of Physical Items	1,893	30,916 (-60%)	148,690 (-3%)	153,029 (-3%)	157,645 (+2%)	154,184 (+1%)	152,652 (-1%)
Combined Use of Digital Resources	2,937	18,589 (+13%)	33,956 (+7%)	31,869 (-39%)	52,539 (-31%)	75,722 (+43%)	52,945 (+145%)
TOTAL Uses of All BDL Items	4,830	49,505 (-47%)	182,646 (-1%)	184,898 (-12%)	210,184 (-9%)	229,906 (+12%)	205,597 (+16%)

Cataloging

June 2020

	BDL Monthly Total	BDL YTD	BDL Year End (Year-over-Year Change)				
			2019	2018	2017	2016	2015
Physical Items Added to the Catalog	1,360	3,894 (-27%)	9,719 (-12%)	11,056 (+0%)	11,009 (-1%)	11,091 (+29%)	8,582 (+40%)
Physical Items Deleted from the Catalog	6,429 ²	8,795 (+59%)	10,769 (-2%)	10,941 (-55%)	24,366 (+53%)	15,968 (+84%)	8,668 (+40%)

Notes

- Library staff spent time catching up on three months missed for collection maintenance resulting than a higher than normal withdraw of items.

Reference Questions

June 2020

	BDL Monthly Total	BDL YTD	BDL Year End (Year-over-Year Change)				
			2019	2018	2017	2016	2015
General Reference Questions in Person	60	1,760 (-56%)	8,748 (+32%)	6,641 (-12%)	7,537 (+20%)	6,285 (+124%)	2,806 (-0%)
Questions via Telephone Calls	243	1,194 (-40%)	4,111 (+6%)	3,866 (-24%)	5,079 (+10%)	4,622 (+60%)	2,885 (+0%)
Reference Questions Delivered Online	14	92 (-51%)	281 (+85%)	152 (-35%)	233 (-23%)	304 (+34%)	227 (+77%)
In-Person Questions on Computer or Internet Use	15	1,464 (-61%)	7,505 (+6%)	7,068 (-3%)	7,285 (+11%)	6,568 (+18%)	5,551 (+36%)
In-Person Questions about Our Online Databases	3	37 (-81%)	349 (-15%)	409 (+13%)	363 (+114%)	170 (+85%)	92 (-24%)
In-Person Tax Form Questions	3	272 (-13%)	326 (-37%)	518 (+5%)	493 (+4%)	473 (-18%)	579 (+3%)
TOTAL of All Reference Questions	338	4,819 (-54%)	21,320 (+14%)	18,654 (-11%)	20,990 (+14%)	18,422 (+52%)	12,140 (+15%)

Notary Services
Began 9/2017 at Coldwater Only

June 2020

	BDL Monthly Total	BDL YTD	BDL Year End (Year-over-Year Change)				
			2019	2018	2017	2016	2015
Patrons Who Used our Free Notary Services	1	17 (-69%)	95 (+44%)	66 (+371%)	14	0	0
Documents Notarized	1	23 (-73%)	124 (+85%)	67 (+253%)	19	0	0

MeLCat
June 2020

	BDL Monthly Total	BDL YTD	BDL Year End (Year-over-Year Change)				
			2019	2018	2017	2016	2015
Requests from BDL Patrons for Items at Other MeLCat Libraries	0	2,014 (-64%)	10,538 (+1%)	10,462 (+20%)	8,699 (+14%)	7,643 (+5%)	7,280 (+9%)
Requests from BDL Patrons for Items at Other MeLCat Libraries, Actually Fulfilled	0	1,890 (-64%)	9,873 (+1%)	9,777 (+20%)	8,169 (+15%)	7,112 (+16%)	6,118 (+8%)
Requests from Other MeLCat Libraries for Items at BDL	0	1,727 (-61%)	8,405 (-18%)	10,296 (+29%)	7,994 (+13%)	7,096 (+18%)	5,989 (-10%)
Requests from Other MeLCat Libraries for Items at BDL, Actually Fulfilled	0	1,287 (-69%)	7,582 (-23%)	9,810 (+25%)	7,867 (+11%)	7,068 (+46%)	4,855 (-10%)

Programs Held
June 2020

	BDL Monthly Total	BDL YTD	BDL Year End (Year-over-Year Change)				
			2019	2018	2017	2016	2015
Juvenile Programs Held	9	270 (-44%)	536 (-27%)	730 (+1%)	720 (+19%)	604 (+5%)	575 (+19%)
Young Adult Programs Held	0	108 (-20%)	264 (-22%)	338 (+41%)	239 (+47%)	163 (+8%)	151 (+20%)
Adult Programs Held	7	102 (+20%)	167 (+23%)	136 (-7%)	146 (-34%)	220 (+40%)	157 (+26%)
Juvenile Summer Reading Events Held	0	0	93 (-18%)	114 (+20%)	95 (+7%)	89 (+6%)	84 (+8%)
Young Adult Summer Reading Events Held	0	0	53 (+8%)	49 (-14%)	57 (+97%)	29 (-66%)	85 (+183%)
Adult Summer Reading Events Held	0	0	17 (+467%)	3	0	3 (-40%)	5 (+25%)
Computer Classes Held	0	0	81 (+305%)	20 (-9%)	22 (+57%)	14 (-36%)	22 (-8%)
TOTAL of All Programs	16	480 (-40%)	1,211 (-13%)	1,390 (+9%)	1,279 (+14%)	1,122 (+4%)	1,079 (+24%)

Program Attendance

June 2020

	BDL Monthly Total	BDL YTD	BDL Year End (Year-over-Year Change)				
			2019	2018	2017	2016	2015
Attendees at Juvenile Programs	806	13,170 (+59%)	10,939 (-30%)	15,725 (+2%)	15,351 (+48%)	10,371 (+23%)	8,415 (+7%)
Attendees at Young Adult Programs	0	2,909 (+231%)	2,106 (-35%)	3,218 (-15%)	3,806 (+276%)	1,011 (+14%)	884 (+38%)
Attendees at Adult Programs	499	7,969 (+806%)	2,627 (+33%)	1,970 (-0%)	1,979 (-3%)	2,048 (-5%)	2,157 (+65%)
Attendees at Juvenile Summer Reading Events	0	0	1,725 (-55%)	3,864 (+24%)	3,116 (-20%)	3,904 (+56%)	2,499 (-21%)
Attendees at Young Adult Summer Reading Events	0	0	251 (-25%)	333 (-50%)	671 (+127%)	295 (+14%)	259 (-16%)
Attendees at Adult Summer Reading Events	0	0	310 (+265%)	85	0	21 (-73%)	77 (-31%)
Attendees at Computer Classes	0	0	26 (+30%)	20 (-5%)	21 (+75%)	12 (-59%)	29 (+4%)
TOTAL of All Program Attendance	1,305	24,048 (+98%)	17,984 (-29%)	25,215 (+1%)	24,944 (+41%)	17,662 (+23%)	14,320 (+7%)

Summer Reading Overview

June 2020

	BDL Monthly Total	BDL YTD	BDL Year End (Year-over-Year Change)				
			2019	2018	2017	2016	2015
Juveniles Signed Up for Summer Reading Program	0	0	345 (-54%)	747 (-35%)	1,153 (+19%)	967 (+13%)	859
Young Adults Signed up for Summer Reading Program	0	0	90 (-76%)	378 (-2%)	385 (+241%)	113 (-64%)	311
Adults Signed Up for Summer Reading Program	0	0	159 (-36%)	248 (+112%)	117 (+36%)	86 (+1%)	85
Juveniles who Completed Summer Reading Program	0	0	203 (-22%)	260 (-50%)	518 (+13%)	459 (-10%)	512
Young Adults who Completed Summer Reading Program	0	0	60 (-56%)	135 (-50%)	268 (+332%)	62 (-49%)	122
Adults who Completed Summer Reading Program	0	0	118 (-28%)	165 (+72%)	96 (+60%)	60 (+7%)	56
Juvenile Summer Reading Events Held	0	0	93 (-18%)	114 (+20%)	95 (+7%)	89 (+6%)	84 (+8%)
Young Adult Summer Reading Events Held	0	0	53 (+8%)	49 (-14%)	57 (+97%)	29 (-66%)	85 (+183%)
Adult Summer Reading Events Held	0	0	17 (+467%)	3	0	3 (-40%)	5 (+25%)
Attendees at Juvenile Summer Reading Events	0	0	1,725 (-55%)	3,864 (+24%)	3,116 (-20%)	3,904 (+56%)	2,499 (-21%)
Attendees at Young Adult Summer Reading Events	0	0	251 (-25%)	333 (-50%)	671 (+127%)	295 (+14%)	259 (-16%)
Attendees at Adult Summer Reading Events	0	0	310 (+265%)	85	0	21 (-73%)	77 (-31%)

Summer Reading Program Signups

June 2020

	BDL Monthly Total	BDL YTD	BDL Year End (Year-over-Year Change)				
			2019	2018	2017	2016	2015
Juveniles Signed Up for Summer Reading Program	0	0	345 (-54%)	747 (-35%)	1,153 (+19%)	967 (+13%)	859
Young Adults Signed up for Summer Reading Program	0	0	90 (-76%)	378 (-2%)	385 (+241%)	113 (-64%)	311
Adults Signed Up for Summer Reading Program	0	0	159 (-36%)	248 (+112%)	117 (+36%)	86 (+1%)	85
TOTAL Summer Reading Program Signups	0	0	594 (-57%)	1,373 (-17%)	1,655 (+42%)	1,166 (-7%)	1,255

Summer Reading Program Completions

June 2020

	BDL Monthly Total	BDL YTD	BDL Year End (Year-over-Year Change)				
			2019	2018	2017	2016	2015
Juveniles who Completed Summer Reading Program	0	0	203 (-22%)	260 (-50%)	518 (+13%)	459 (-10%)	512
Young Adults who Completed Summer Reading Program	0	0	60 (-56%)	135 (-50%)	268 (+332%)	62 (-49%)	122
Adults who Completed Summer Reading Program	0	0	118 (-28%)	165 (+72%)	96 (+60%)	60 (+7%)	56
TOTAL Summer Reading Program Completions	0	0	381 (-32%)	560 (-37%)	882 (+52%)	581 (-16%)	690

Library-Provided Computer Services

June 2020

	BDL Monthly Total	BDL YTD	BDL Year End (Year-over-Year Change)				
			2019	2018	2017	2016	2015
One-hour sessions on Library Wifi	20,904	155,642 (-37%)	474,750 (+2%)	465,219 (+9%)	425,714 (+4%)	410,437 (+17%)	351,423 (+18%)
Desktop, Laptop, and Tablet Computers Available for Public Use	88		88 (-1%)	89 (+22%)	73	73	73
Sessions on Library-Provided Computers	45	6,401 (-59%)	34,577 (-24%)	45,687 (+3%)	44,181 (+6%)	41,513 (-11%)	46,405 (+6%)
Hours Library-Provided Computers Used (Tracking Since 2018)	14.69	4,461.91 (-60%)	24,280.36 (-2%)	24,701.55	0.00	0.00	0.00
Desktop, Laptop, and Tablet Computers Available for Staff Use	52		52 (+4%)	50 (+22%)	41	41	41

Website Stats

June 2020

	BDL Monthly Total	BDL YTD	BDL Year End (Year-over-Year Change)				
			2019	2018	2017	2016	2015
Monthly Website Sessions	3,267	19,507 (-34%)	58,161 (+28%)	45,594 (-38%)	73,326 (-2%)	75,139 (+3%)	72,706 (+6%)
Monthly Website Page Views	7,577	43,078 (-38%)	129,778 (+9%)	118,634 (-33%)	177,799 (-2%)	182,084 (+7%)	169,630 (+4%)

Faxes, Prints, and Sales

June 2020

	BDL Monthly Total	BDL YTD	BDL Year End (Year-over-Year Change)				
			2019	2018	2017	2016	2015
Fax Pages Received	0	110 (-47%)	350 (-16%)	419 (+61%)	260 (+19%)	219 (+27%)	173 (+3%)
Fax Pages Sent	54	1,501 (-66%)	9,524 (+3%)	9,249 (+138%)	3,879 (+123%)	1,741 (-7%)	1,882 (+39%)
Free Prints for Job Seekers	0	676 (-55%)	2,796 (-23%)	3,631 (+16%)	3,128 (+9%)	2,878 (+23%)	2,335 (-23%)
Black and White Patron Prints (Tracking Since 6/2016)	216	15,860 (-57%)	75,818 (-6%)	81,016 (+7%)	75,606 (+113%)	35,561	0
Color Patron Prints (Tracking Since 6/2016)	1	2,228 (-59%)	11,299 (-8%)	12,285 (+20%)	10,253 (+154%)	4,036	0
Flash Drives Sold (Tracking Since 6/2016)	0	8 (-60%)	37 (-10%)	41 (-27%)	56 (+4%)	54	0
Earbuds Sold (Tracking Since 6/2016)	1	83 (-62%)	462 (-14%)	538 (+29%)	416 (+151%)	166	0

Fines and Fees
Overdue Fines Dropped in 2017

June 2020

	BDL Monthly Total	BDL YTD	BDL Year End (Year-over-Year Change)				
			2019	2018	2017	2016	2015
Fines and Fees Payments Received	\$ 98.50	\$ 559.37 (-63%)	\$ 3,092.62 (+28%)	\$ 2,412.73 (-68%)	\$ 7,628.31 (-24%)	\$ 10,062.96 (-30%)	\$ 14,448.76 (-3%)
Outstanding Fines and Fees	\$ 48,030.40		55,588.42 (-0%)	55,850.27 (-34%)	84,232.33 (-63%)	228,102.90 (+3%)	221,076.26 (+5%)

Debt Collections
Unique Management Services, Inc.
Tracking Since 2014

June 2020

	BDL Monthly Total	BDL YTD	BDL Year End (Year-over-Year Change)				
			2019	2018	2017	2016	2015
Fine Payments as a Result of Collection Agency's Efforts	\$ 0.00	\$ 0.00	\$ 268.00 (-94%)	\$ 4,183.45 (+1,727%)	\$ 229.00 (-76%)	\$ 947.13 (+16%)	\$ 818.48 (+1%)
Library Materials Returned as a Result of Collection Agency's Efforts	\$ 0.00	\$ 0.00	\$ 0.00	\$ 462.00 (-48%)	\$ 888.95 (-33%)	\$ 1,317.93 (-2%)	\$ 1,346.89 (-28%)
What We Paid Collection Agency for Their Services	\$ 0.00	\$ 0.00	\$ 134.10 (-75%)	\$ 528.66 (-5%)	\$ 558.08 (-45%)	\$ 1,022.23 (-3%)	\$ 1,051.42 (+40%)

Value to Our Service Area
Visit <https://www.BranchDistrictLibrary.org/value>
to learn how we determine these numbers.

June 2020

	BDL Monthly Total	BDL YTD	BDL Year End (Year-over-Year Change)				
			2019	2018	2017	2016	2015
Value from Physical Item Checkouts	\$ 26,226.65	\$ 367,038.15 (-60%)	\$ 1,755,554.08 (-7%)	\$ 1,888,907.75 (-12%)	\$ 2,135,671.28 (+0%)	\$ 2,132,387.79 (-2%)	\$ 2,167,140.68 (+0%)
Value from Attending Programs (Tracking Since 1/2018)	\$ 6,525.00	\$ 23,520.00 (-60%)	\$ 118,485.00 (-6%)	\$ 125,795.00	\$ 0.00	\$ 0.00	\$ 0.00
Value from Fax Service (Tracking Since 1/2018)	\$ 54.00	\$ 1,583.00 (-68%)	\$ 10,205.00 (+6%)	\$ 9,668.00	\$ 0.00	\$ 0.00	\$ 0.00
Value from Employment Prints (Tracking Since 1/2018)	\$ 0.00	\$ 100.50 (-56%)	\$ 419.40 (-23%)	\$ 544.65	\$ 0.00	\$ 0.00	\$ 0.00
Value from Notary Services (Tracking Since 1/2018)	\$ 5.00	\$ 80.00 (-70%)	\$ 475.00 (+44%)	\$ 330.00	\$ 0.00	\$ 0.00	\$ 0.00
Value from Digital Services (Tracking Since 1/2018)	\$ 11,748.00	\$ 73,228.00 (+11%)	\$ 135,824.00 (+7%)	\$ 127,476.00	\$ 0.00	\$ 0.00	\$ 0.00
Value from Using Library Computers (Tracking Since 1/2018)	\$ 44.07	\$ 13,385.73 (-60%)	\$ 72,841.08 (-2%)	\$ 74,104.66	\$ 0.00	\$ 0.00	\$ 0.00
Value from Using Library Wifi (Tracking Since 1/2018)	\$ 1,463.28	\$ 10,894.94 (-37%)	\$ 33,232.50 (+2%)	\$ 32,565.33	\$ 0.00	\$ 0.00	\$ 0.00
TOTAL Value of Free Library Services	\$ 46,066.00	\$ 489,830.32 (-55%)	\$ 2,127,036.06 (-6%)	\$ 2,259,391.39 (+6%)	\$ 2,135,671.28 (+0%)	\$ 2,132,387.79 (-2%)	\$ 2,167,140.68 (+0%)

Materials Expenditures

Tracking since 2018

June 2020

	BDL Monthly Total	BDL YTD	BDL Year End (Year-over-Year Change)				
			2019	2018	2017	2016	2015
Amount Spent on Books	\$ 1,197.61	\$ 23,581.45 (-50%)	\$ 76,878.30 (-18%)	\$ 93,763.50	\$ 0.00	\$ 0.00	\$ 0.00
Amount Spent on Periodicals	\$ 40.00	\$ 170.29 (-80%)	\$ 5,663.99 (-20%)	\$ 7,085.59	\$ 0.00	\$ 0.00	\$ 0.00
Amount Spent on Audiovisual Materials	\$ 254.40	\$ 4,237.89 (-43%)	\$ 15,009.96 (-17%)	\$ 17,998.47	\$ 0.00	\$ 0.00	\$ 0.00
Amount Spent on Digital Resources	\$ 2,971.56	\$ 17,975.81 (+24%)	\$ 28,412.62 (-35%)	\$ 43,798.90	\$ 0.00	\$ 0.00	\$ 0.00
TOTAL Spent on All Library Materials	\$ 4,463.57	\$ 45,965.44 (-35%)	\$ 125,964.87 (-23%)	\$ 162,646.46	\$ 0.00	\$ 0.00	\$ 0.00

Other Expenditures

Tracking since 2018

June 2020

	BDL Monthly Total	BDL YTD	BDL Year End (Year-over-Year Change)				
			2019	2018	2017	2016	2015
Total Materials Expenditures	\$ 4,463.57	\$ 45,965.44 (-35%)	\$ 125,964.87 (-23%)	\$ 162,646.46	\$ 0.00	\$ 0.00	\$ 0.00
Total Staff Expenditures	\$ 72,565.94	\$ 483,766.50 (-27%)	\$ 1,172,756.92 (-20%)	\$ 1,469,560.33	\$ 0.00	\$ 0.00	\$ 0.00
Expenditures in other categories	\$ 32,194.95	\$ 193,270.88 (+6%)	\$ 353,231.25 (-16%)	\$ 422,747.74	\$ 0.00	\$ 0.00	\$ 0.00
TOTAL Expenditures in all Categories	\$ 125,355.81	\$ 853,273.81 (-11%)	\$ 1,797,240.67 (-13%)	\$ 2,054,954.53	\$ 0.00	\$ 0.00	\$ 0.00

Staffing

June 2020

	BDL Monthly Total	BDL YTD	BDL Year End (Year-over-Year Change)				
			2019	2018	2017	2016	2015
Total BDL Staff	36	36 (avg) (-3%)	37 (avg) (-8%)	40 (avg) (+5%)	37 (avg) (+9%)	34 (avg) (+17%)	29 (avg) (-3%)
BDL Staff with MLS Degree	5	5 (avg) (+25%)	5 (avg) (-33%)	6 (avg) (+20%)	5 (avg) (+150%)	3 (avg)	2 (avg)
Worked Full-Time Equivalents	26.12	26.48 (avg)	25.78 (avg) (-4%)	26.92 (avg) (+8%)	24.91 (avg) (+41%)	17.90 (avg) (+13%)	15.75 (avg) (-6%)
Hours of Specialized Training for Staff (Tracking Since 1/2019)	178	485 (+267%)	534	0	0	0	0
Hours Volunteers Worked at the Library (Tracking Since 1/2019)	0	39 (-95%)	1,065	0	0	0	0

Outreach Services

Began 2018

June 2020

	BDL Monthly Total	BDL YTD	BDL Year End (Year-over-Year Change)				
			2019	2018	2017	2016	2015
Number of Patrons Served by Outreach Services	2	2 (-96%)	70 (-8%)	76 (+2,433%)	3	0	0
Number of Items Delivered to Outreach Patrons	11	13 (-92%)	220 (-64%)	606 (+2,231%)	26	0	0

Coldwater Branch Heritage Room

Stats part of Coldwater Branch totals above; shown here for convenience.

June 2020

	Heritage Room	BDL YTD	BDL Year End (Year-over-Year Change)				
			2019	2018	2017	2016	2015
Heritage Room Attendance	0	99 (-58%)	484 (-34%)	736 (+12%)	658 (-7%)	705 (+51%)	468 (+50%)
In-Person Reference Questions	0	76 (-61%)	412 (-42%)	708 (+29%)	550 (+664%)	72 (+140%)	30 (-27%)
Reference Telephone Calls	0	41 (-63%)	232 (-16%)	277 (-36%)	433 (+15%)	376 (+83%)	206 (+145%)
Online Reference Questions	3	13 (-62%)	65 (+8%)	60 (-5%)	63 (-24%)	83 (+8%)	77 (+79%)

Coldwater Branch Kids' Place

Stats part of Coldwater Branch totals above; shown here for convenience.
Tracking separately since April 2019.

June 2020

	Kids' Place	BDL YTD	BDL Year End (Year-over-Year Change)				
			2019	2018	2017	2016	2015
Kids' Place Attendance	22	1,895 (-44%)	9,710	0	0	0	0
In-Person Reference Questions	0	121 (-48%)	575	0	0	0	0
Reference Telephone Calls	0	31 (-67%)	224	0	0	0	0
Online Reference Questions	0	0	0	0	0	0	0

Coldwater Branch Teen Space

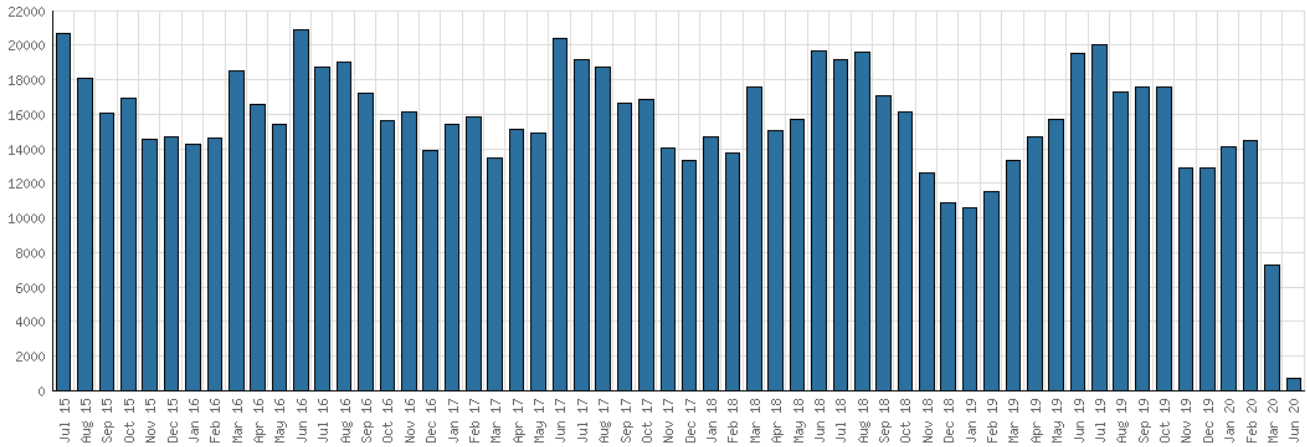
Stats part of Coldwater Branch totals above; shown here for convenience.
Tracking separately since April 2019.

June 2020

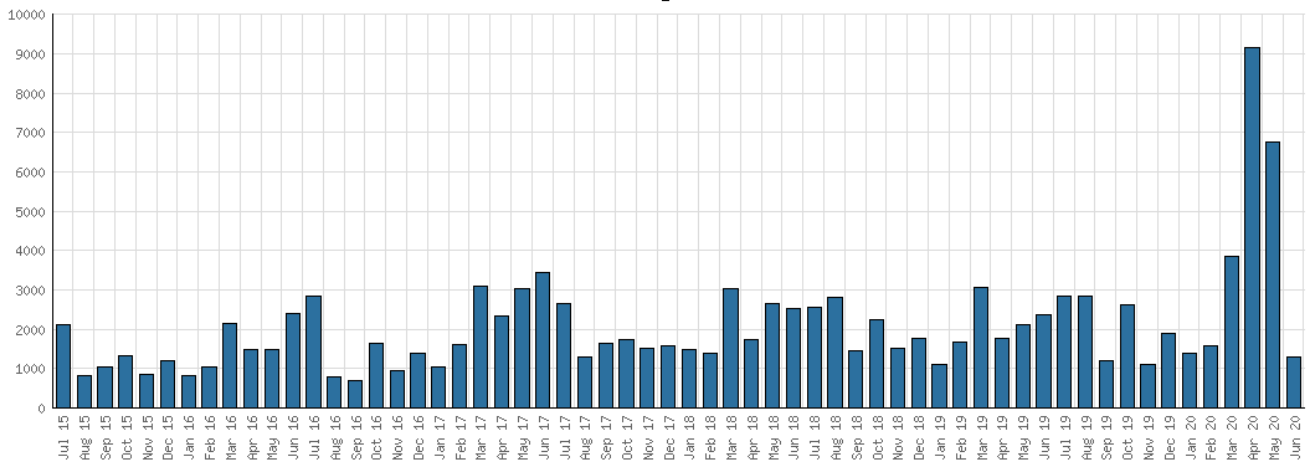
	Teen Space	BDL YTD	BDL Year End (Year-over-Year Change)				
			2019	2018	2017	2016	2015
Teen Space Attendance	2	768 (-62%)	4,172	0	0	0	0
In-Person Reference Questions	0	4 (-92%)	93	0	0	0	0
Reference Telephone Calls	0	0	0	0	0	0	0
Online Reference Questions	0	0	0	0	0	0	0

Selected Graphs 5-year Monthly Trends

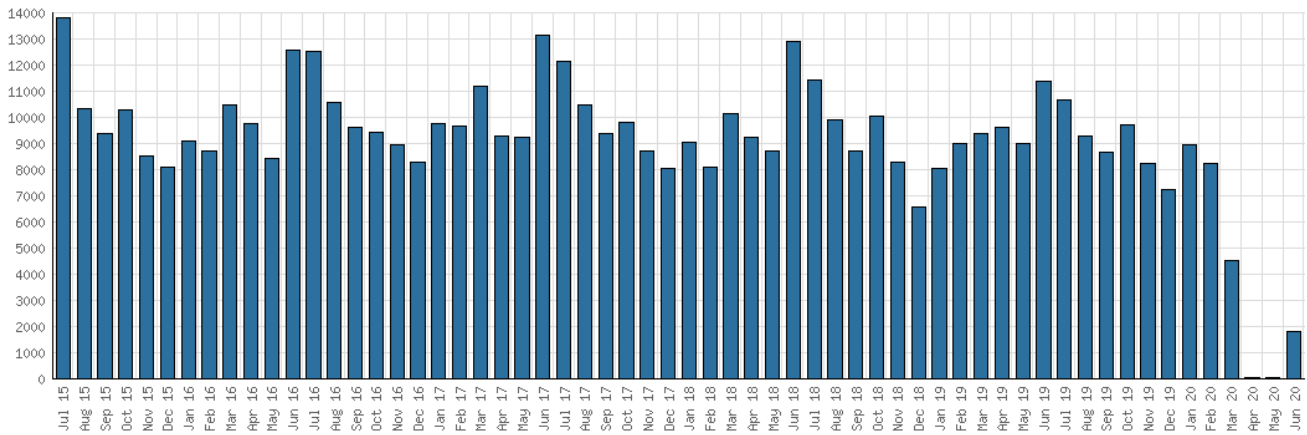
District Attendance



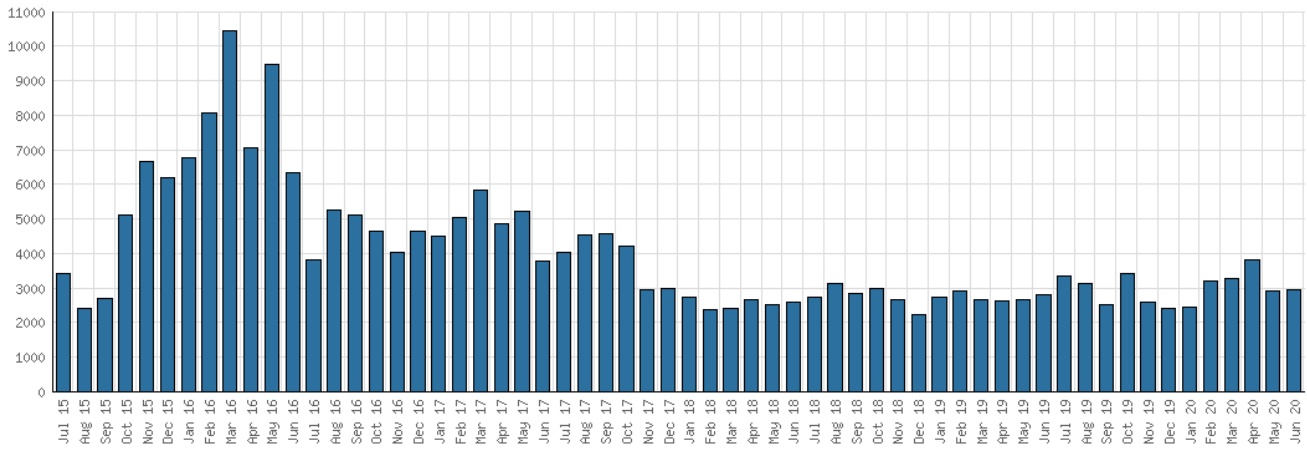
District Program Attendance



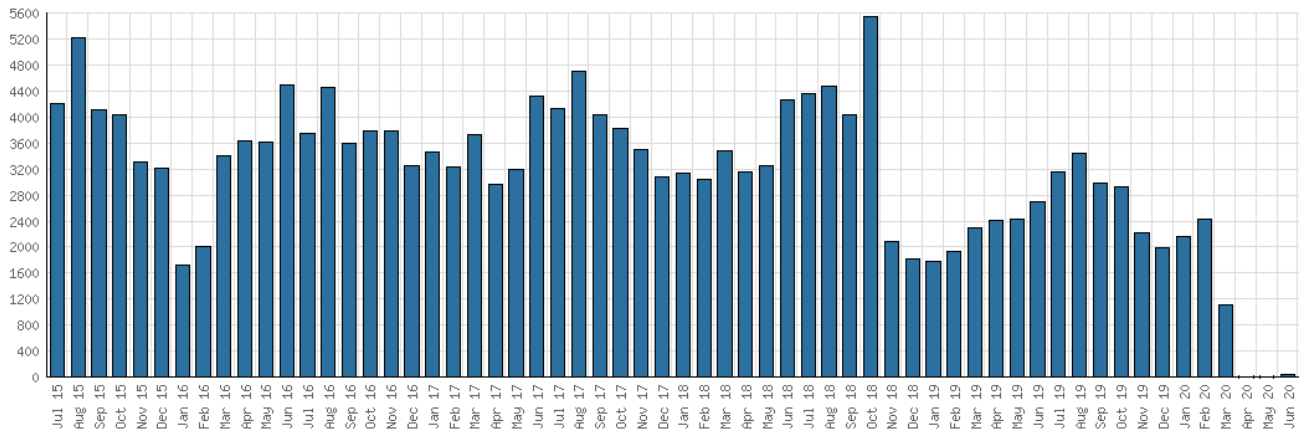
District Physical Checkouts



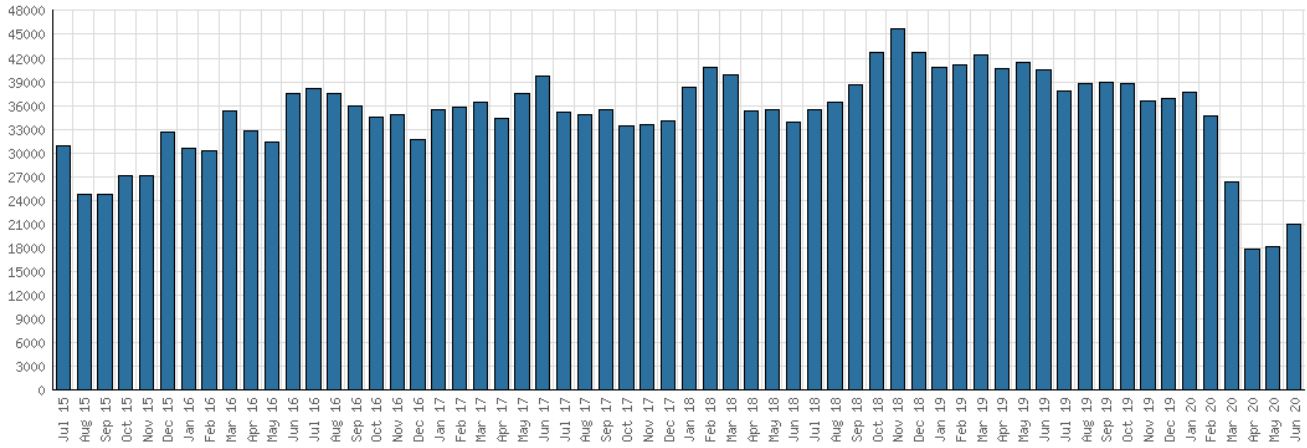
District Digital Usage



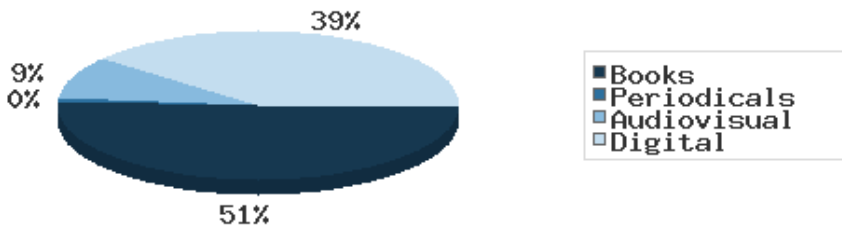
District Use of Library-Provided Computers



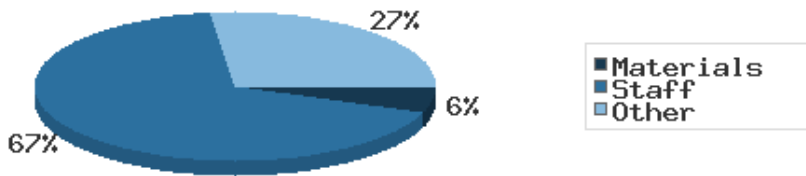
District One-Hour Sessions on Library Wifi



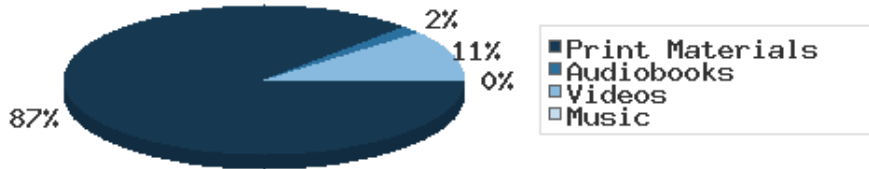
Year-to-Date Materials Expenditures



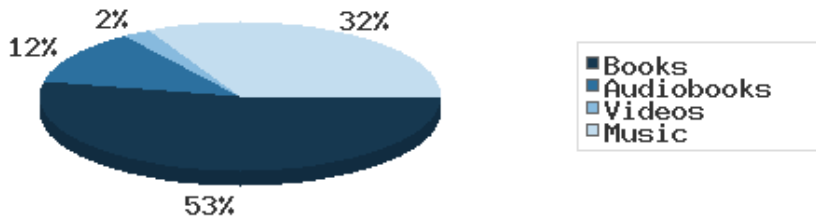
YTD Expenditures in all Categories



Physical Collection



Digital Collection



YTD Usage Breakdown of Digital Services

