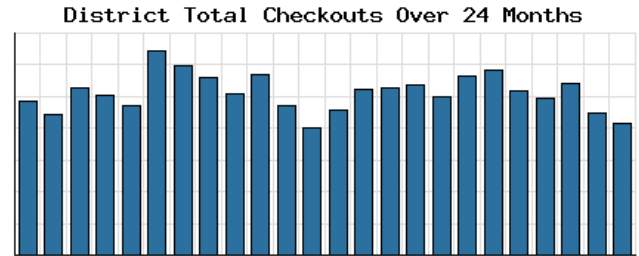


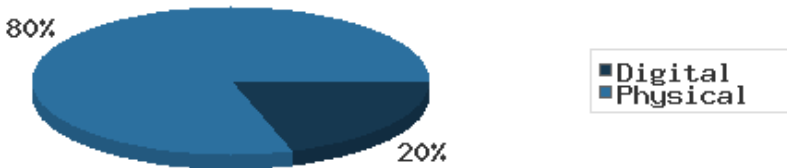
## Monthly Stats Brief Narrative

Through December 2019, the number of patrons entering our buildings slightly decreased system-wide compared to this same time year-to-date the previous year. Combined physical and digital use of library materials stayed about the same year-to-date compared to 2018. About 9% of our registered cardholders checked out a physical item this past month, while about 2% of registered cardholders checked out a digital item.



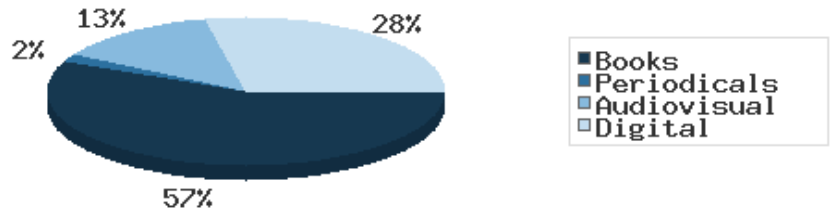
Digital usage has comprised about 19% of total materials use year-to-date through December 2019, and digital usage somewhat increased from this time in 2018.

Digital vs. Physical Circulation YTD



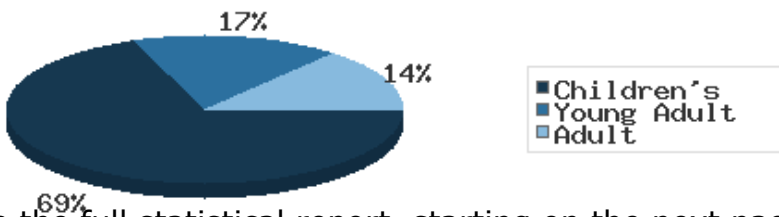
In 2019 BDL spent \$28,412.62 on digital resources and \$97,552.25 on print and audiovisual materials.

Year-to-Date Materials Expenditures



In December 2019, BDL patrons saved \$116,991.90 by checking out 10,015 physical items from the library. Our programming for all ages and our digital services further increase the library's value to the community, bringing the total estimated value to \$143,823.18.

Programs Offered in 2019 YTD



Compared to this time year-to-date 2018, the number of programs BDL offered has increased. Attendance at programs slightly decreased over this same period.

See the full statistical report, starting on the next page, for details and more graphs. The most up-to-date stats are always available online and interactive at

<https://www.BranchDistrictLibrary.org/stats>.

## Attendance December 2019

	BDL Monthly Total	BDL YTD	BDL Year End (Year-over-Year Change)				
			2018	2017	2016	2015	2014
Attendance	12,277	169,795 (-12%)	191,866 (-1%)	193,922 (-4%)	200,991 (+3%)	195,735 (+17%)	167,414 (-2%)
Hours Open	899.50	11,250.25 (-9%)	12,312.00 (+13%)	10,869.15 (-0%)	10,877.50 (+25%)	8,703.00 (+61%)	5,395.00 (+3%)
Number of Hours Scheduled Open Each Week (Tracking Since 1/2018)	241.00		245.00	0.00	0.00	0.00	0.00

## Patrons December 2019

	BDL Monthly Total	BDL YTD	BDL Year End (Year-over-Year Change)				
			2018	2017	2016	2015	2014
Population in our Service Area (Tracking Since 2018)	44,926	45,093 (avg) (-0%)	44,926 (avg)	0 (avg)	0 (avg)	0 (avg)	0 (avg)
Library Card Holders	20,773	20,493 (avg) (-4%)	20,166 (avg) (-21%)	25,685 (avg) (+3%)	24,899 (avg) (+4%)	23,974 (avg) (+5%)	22,879 (avg) (+5%)
Patrons Who Checked Out a Physical Item	1,890	2,136 (avg) (-2%)	1,896 (avg) (+0%)	1,887 (avg) (-7%)	2,030 (avg) (-2%)	2,069 (avg) (-2%)	2,109 (avg) (-10%)
New Library Card Holders Added	39	618 (-39%)	1,021 (+21%)	844 (-15%)	989 (-9%)	1,086 (-22%)	1,390 (+22%)
In-House Holds Filled for Our Library Card Holders	659	10,527 (-4%)	10,987 (-6%)	11,650 (+12%)	10,407 (+2%)	10,225 (+7%)	9,546 (-16%)
Active Hoopla Users (Began 2016)	260	290 (avg) (+14%)	262 (avg) (+39%)	189 (avg) (+47%)	129 (avg)	0 (avg)	0 (avg)
Active OverDrive Users	203	213 (avg) (+18%)	197 (avg) (+26%)	156 (avg) (+16%)	134 (avg) (-7%)	144 (avg) (+7%)	134 (avg) (+20%)

## Physical Collection Tracking Item-Type Breakdown Since 8/2017

December 2019

	BDL Monthly Total	BDL YTD	BDL Year End (Year-over-Year Change)				
			2018	2017	2016	2015	2014
Physical Books and All other Print Materials in the Catalog	98,689		100,253 (-0%)	100,293	0	0	0
Physical Audiobooks in the Catalog	1,783		1,881 (+2%)	1,852	0	0	0
Physical Video Materials in the Catalog	11,460		10,579 (+1%)	10,519	0	0	0
Physical Music Recordings in the Catalog	159		337 (-2%)	345	0	0	0
<b>TOTAL Physical Items in the Catalog</b>	<b>112,053</b>		<b>113,050 (+0%)</b>	<b>113,009 (-11%)</b>	<b>126,407 (-4%)</b>	<b>131,432 (+1%)</b>	<b>130,210 (+1%)</b>

## Digital Collection

Tracking Since 8/2017

December 2019

	BDL Monthly Total	BDL YTD	BDL Year End (Year-over-Year Change)				
			2018	2017	2016	2015	2014
Ebooks in All Digital Collections	370,666		306,595 (+33%)	230,178	0	0	0
Audiobooks in All Digital Collections	86,004		71,995 (+36%)	52,833	0	0	0
Video Materials in All Digital Collections	16,267		14,229 (-10%)	15,767	0	0	0
Music Recordings in All Digital Collections	271,614		239,705 (-14%)	280,259	0	0	0
<b>TOTAL of All Digital Collections</b>	<b>744,551</b>		<b>632,524 (+9%)</b>	<b>579,037</b>	<b>0</b>	<b>0</b>	<b>0</b>

## Total Collection

Tracking Since 8/2017

December 2019

	BDL Monthly Total	BDL YTD	BDL Year End (Year-over-Year Change)				
			2018	2017	2016	2015	2014
Combined Physical Items	112,053		113,050 (+0%)	113,009 (-11%)	126,407 (-4%)	131,432 (+1%)	130,210 (+1%)
Combined Digital Collections	744,551		632,524 (+9%)	579,037	0	0	0
<b>TOTAL of all Collections</b>	<b>856,604</b>		<b>745,574 (+8%)</b>	<b>692,046 (+447%)</b>	<b>126,407 (-4%)</b>	<b>131,432 (+1%)</b>	<b>130,210 (+1%)</b>

## Use of Physical Items

December 2019

	BDL Monthly Total	BDL YTD	BDL Year End (Year-over-Year Change)				
			2018	2017	2016	2015	2014
Checkouts of Cataloged Items	7,250	110,285 (-3%)	113,128 (-6%)	120,916 (+2%)	118,595 (-3%)	121,841 (-1%)	123,074 (-11%)
Renewals of Cataloged Items	1,051	13,490 (-1%)	13,607 (-8%)	14,804 (-4%)	15,480 (+0%)	15,434 (-4%)	16,044 (-2%)
Items Used in the Library But Not Checked Out	303	4,166 (+49%)	2,803 (-8%)	3,050 (+126%)	1,351 (+7,011%)	19 (-68%)	60
Checkouts of Uncataloged Items	244	3,294 (-16%)	3,904 (+38%)	2,839 (-38%)	4,578 (+4%)	4,385 (-5%)	4,601 (-8%)
Requests from BDL Patrons for Items at Other MeLCat Libraries, Actually Fulfilled	650	9,873 (+1%)	9,777 (+20%)	8,169 (+15%)	7,112 (+16%)	6,118 (+8%)	5,677 (-10%)
Requests from Other MeLCat Libraries for Items at BDL, Actually Fulfilled	517	7,582 (-23%)	9,810 (+25%)	7,867 (+11%)	7,068 (+46%)	4,855 (-10%)	5,400 (-42%)
<b>TOTAL Use of Physical Items</b>	<b>10,015</b>	<b>148,690 (-3%)</b>	<b>153,029 (-3%)</b>	<b>157,645 (+2%)</b>	<b>154,184 (+1%)</b>	<b>152,652 (-1%)</b>	<b>154,856 (-12%)</b>

## Use of Digital Resources

December 2019

	BDL Monthly Total	BDL YTD	BDL Year End (Year-over-Year Change)				
			2018	2017	2016	2015	2014
OverDrive Checkouts	897	10,822 (+14%)	9,501 (+21%)	7,823 (+4%)	7,502 (+2%)	7,380 (+12%)	6,615 (+17%)
Hoopla Checkouts (Began 2016)	891	12,530 (-2%)	12,796 (+20%)	10,669 (+96%)	5,432	0	0
All Other Digital Services	638	10,604 (+11%)	9,572 (-72%)	34,047 (-46%)	62,788 (+38%)	45,565 (+203%)	15,031 (+26%)
<b>TOTAL Use of Digital Resources</b>	<b>2,426</b>	<b>33,956 (+7%)</b>	<b>31,869 (-39%)</b>	<b>52,539 (-31%)</b>	<b>75,722 (+43%)</b>	<b>52,945 (+145%)</b>	<b>21,646 (+23%)</b>

## Total Item Usage

December 2019

	BDL Monthly Total	BDL YTD	BDL Year End (Year-over-Year Change)				
			2018	2017	2016	2015	2014
Combined Checkouts of Physical Items	10,015	148,690 (-3%)	153,029 (-3%)	157,645 (+2%)	154,184 (+1%)	152,652 (-1%)	154,856 (-12%)
Combined Use of Digital Resources	2,426	33,956 (+7%)	31,869 (-39%)	52,539 (-31%)	75,722 (+43%)	52,945 (+145%)	21,646 (+23%)
<b>TOTAL Uses of All BDL Items</b>	<b>12,441</b>	<b>182,646 (-1%)</b>	<b>184,898 (-12%)</b>	<b>210,184 (-9%)</b>	<b>229,906 (+12%)</b>	<b>205,597 (+16%)</b>	<b>176,502 (-8%)</b>

## Cataloging

December 2019

	BDL Monthly Total	BDL YTD	BDL Year End (Year-over-Year Change)				
			2018	2017	2016	2015	2014
Physical Items Added to the Catalog	727	9,719 (-12%)	11,056 (+0%)	11,009 (-1%)	11,091 (+29%)	8,582 (+40%)	6,134 (+1%)
Physical Items Deleted from the Catalog	672	10,769 (-2%)	10,941 (-55%)	24,366 (+53%)	15,968 (+84%)	8,668 (+40%)	6,186 (+30%)

## Reference Questions

December 2019

	BDL Monthly Total	BDL YTD	BDL Year End (Year-over-Year Change)				
			2018	2017	2016	2015	2014
General Reference Questions in Person	650	8,748 (+32%)	6,641 (-12%)	7,537 (+20%)	6,285 (+124%)	2,806 (-0%)	2,809 (-22%)
Questions via Telephone Calls	342	4,111 (+6%)	3,866 (-24%)	5,079 (+10%)	4,622 (+60%)	2,885 (+0%)	2,872 (+18%)
Reference Questions Delivered Online	16	281 (+85%)	152 (-35%)	233 (-23%)	304 (+34%)	227 (+77%)	128 (+184%)
In-Person Questions on Computer or Internet Use	495	7,505 (+6%)	7,068 (-3%)	7,285 (+11%)	6,568 (+18%)	5,551 (+36%)	4,076 (+9%)
In-Person Questions about Our Online Databases	17	349 (-15%)	409 (+13%)	363 (+114%)	170 (+85%)	92 (-24%)	121 (-41%)
In-Person Tax Form Questions	1	326 (-37%)	518 (+5%)	493 (+4%)	473 (-18%)	579 (+3%)	560 (+5%)
<b>TOTAL of All Reference Questions</b>	<b>1,521</b>	<b>21,320 (+14%)</b>	<b>18,654 (-11%)</b>	<b>20,990 (+14%)</b>	<b>18,422 (+52%)</b>	<b>12,140 (+15%)</b>	<b>10,566 (-0%)</b>

## Notary Services

Began 9/2017 at Coldwater Only

December 2019

	BDL Monthly Total	BDL YTD	BDL Year End (Year-over-Year Change)				
			2018	2017	2016	2015	2014
Patrons Who Used our Free Notary Services	3	95 (+44%)	66 (+371%)	14	0	0	0
Documents Notarized	7	124 (+85%)	67 (+253%)	19	0	0	0

**MeLCat**  
December 2019

	BDL Monthly Total	BDL YTD	BDL Year End (Year-over-Year Change)				
			2018	2017	2016	2015	2014
			<b>Requests from BDL Patrons for Items at Other MeLCat Libraries</b>	708	10,538 (+1%)	10,462 (+20%)	8,699 (+14%)
<b>Requests from BDL Patrons for Items at Other MeLCat Libraries, Actually Fulfilled</b>	650	9,873 (+1%)	9,777 (+20%)	8,169 (+15%)	7,112 (+16%)	6,118 (+8%)	5,677 (-10%)
<b>Requests from Other MeLCat Libraries for Items at BDL</b>	601	8,405 (-18%)	10,296 (+29%)	7,994 (+13%)	7,096 (+18%)	5,989 (-10%)	6,619 (-33%)
<b>Requests from Other MeLCat Libraries for Items at BDL, Actually Fulfilled</b>	517	7,582 (-23%)	9,810 (+25%)	7,867 (+11%)	7,068 (+46%)	4,855 (-10%)	5,400 (-42%)

**Programs Held**  
December 2019

	BDL Monthly Total	BDL YTD	BDL Year End (Year-over-Year Change)				
			2018	2017	2016	2015	2014
			<b>Juvenile Programs Held</b>	78	804 (+10%)	730 (+1%)	720 (+19%)
<b>Young Adult Programs Held</b>	24	304 (-10%)	338 (+41%)	239 (+47%)	163 (+8%)	151 (+20%)	126 (+157%)
<b>Adult Programs Held</b>	12	167 (+23%)	136 (-7%)	146 (-34%)	220 (+40%)	157 (+26%)	125 (+44%)
<b>Juvenile Summer Reading Events Held</b>	0	173 (+52%)	114 (+20%)	95 (+7%)	89 (+6%)	84 (+8%)	78
<b>Young Adult Summer Reading Events Held</b>	0	61 (+24%)	49 (-14%)	57 (+97%)	29 (-66%)	85 (+183%)	30
<b>Adult Summer Reading Events Held</b>	0	17 (+467%)	3	0	3 (-40%)	5 (+25%)	4
<b>Computer Classes Held</b>	0	81 (+305%)	20 (-9%)	22 (+57%)	14 (-36%)	22 (-8%)	24
<b>TOTAL of All Programs</b>	<b>114</b>	<b>1,607 (+16%)</b>	<b>1,390 (+9%)</b>	<b>1,279 (+14%)</b>	<b>1,122 (+4%)</b>	<b>1,079 (+24%)</b>	<b>869 (+43%)</b>

**Program Attendance**  
December 2019

	BDL Monthly Total	BDL YTD	BDL Year End (Year-over-Year Change)				
			2018	2017	2016	2015	2014
			<b>Attendees at Juvenile Programs</b>	1,392	14,654 (-7%)	15,725 (+2%)	15,351 (+48%)
<b>Attendees at Young Adult Programs</b>	181	2,489 (-23%)	3,218 (-15%)	3,806 (+276%)	1,011 (+14%)	884 (+38%)	641 (+36%)
<b>Attendees at Adult Programs</b>	316	2,627 (+33%)	1,970 (-0%)	1,979 (-3%)	2,048 (-5%)	2,157 (+65%)	1,310 (+18%)
<b>Attendees at Juvenile Summer Reading Events</b>	0	4,186 (+8%)	3,864 (+24%)	3,116 (-20%)	3,904 (+56%)	2,499 (-21%)	3,159
<b>Attendees at Young Adult Summer Reading Events</b>	0	279 (-16%)	333 (-50%)	671 (+127%)	295 (+14%)	259 (-16%)	307
<b>Attendees at Adult Summer Reading Events</b>	0	310 (+265%)	85	0	21 (-73%)	77 (-31%)	111
<b>Attendees at Computer Classes</b>	0	26 (+30%)	20 (-5%)	21 (+75%)	12 (-59%)	29 (+4%)	28
<b>TOTAL of All Program Attendance</b>	<b>1,889</b>	<b>24,571 (-3%)</b>	<b>25,215 (+1%)</b>	<b>24,944 (+41%)</b>	<b>17,662 (+23%)</b>	<b>14,320 (+7%)</b>	<b>13,413 (+28%)</b>

## Summer Reading Overview

December 2019

	BDL Monthly Total	BDL YTD	BDL Year End (Year-over-Year Change)				
			2018	2017	2016	2015	2014
Juveniles Signed Up for Summer Reading Program	0	711 (-5%)	747 (-35%)	1,153 (+19%)	967 (+13%)	859	0
Young Adults Signed up for Summer Reading Program	0	134 (-65%)	378 (-2%)	385 (+241%)	113 (-64%)	311	0
Adults Signed Up for Summer Reading Program	0	159 (-36%)	248 (+112%)	117 (+36%)	86 (+1%)	85	0
Juveniles who Completed Summer Reading Program	0	385 (+48%)	260 (-50%)	518 (+13%)	459 (-10%)	512	0
Young Adults who Completed Summer Reading Program	0	79 (-41%)	135 (-50%)	268 (+332%)	62 (-49%)	122	0
Adults who Completed Summer Reading Program	0	118 (-28%)	165 (+72%)	96 (+60%)	60 (+7%)	56	0
Juvenile Summer Reading Events Held	0	173 (+52%)	114 (+20%)	95 (+7%)	89 (+6%)	84 (+8%)	78
Young Adult Summer Reading Events Held	0	61 (+24%)	49 (-14%)	57 (+97%)	29 (-66%)	85 (+183%)	30
Adult Summer Reading Events Held	0	17 (+467%)	3	0	3 (-40%)	5 (+25%)	4
Attendees at Juvenile Summer Reading Events	0	4,186 (+8%)	3,864 (+24%)	3,116 (-20%)	3,904 (+56%)	2,499 (-21%)	3,159
Attendees at Young Adult Summer Reading Events	0	279 (-16%)	333 (-50%)	671 (+127%)	295 (+14%)	259 (-16%)	307
Attendees at Adult Summer Reading Events	0	310 (+265%)	85	0	21 (-73%)	77 (-31%)	111

## Summer Reading Program Signups

December 2019

	BDL Monthly Total	BDL YTD	BDL Year End (Year-over-Year Change)				
			2018	2017	2016	2015	2014
Juveniles Signed Up for Summer Reading Program	0	711 (-5%)	747 (-35%)	1,153 (+19%)	967 (+13%)	859	0
Young Adults Signed up for Summer Reading Program	0	134 (-65%)	378 (-2%)	385 (+241%)	113 (-64%)	311	0
Adults Signed Up for Summer Reading Program	0	159 (-36%)	248 (+112%)	117 (+36%)	86 (+1%)	85	0
<b>TOTAL Summer Reading Program Signups</b>	<b>0</b>	<b>1,004 (-27%)</b>	<b>1,373 (-17%)</b>	<b>1,655 (+42%)</b>	<b>1,166 (-7%)</b>	<b>1,255</b>	<b>0</b>

## Summer Reading Program Completions

December 2019

	BDL Monthly Total	BDL YTD	BDL Year End (Year-over-Year Change)				
			2018	2017	2016	2015	2014
Juveniles who Completed Summer Reading Program	0	385 (+48%)	260 (-50%)	518 (+13%)	459 (-10%)	512	0
Young Adults who Completed Summer Reading Program	0	79 (-41%)	135 (-50%)	268 (+332%)	62 (-49%)	122	0
Adults who Completed Summer Reading Program	0	118 (-28%)	165 (+72%)	96 (+60%)	60 (+7%)	56	0
<b>TOTAL Summer Reading Program Completions</b>	<b>0</b>	<b>582 (+4%)</b>	<b>560 (-37%)</b>	<b>882 (+52%)</b>	<b>581 (-16%)</b>	<b>690</b>	<b>0</b>

## Library-Provided Computer Services

December 2019

	BDL Monthly Total	BDL YTD	BDL Year End (Year-over-Year Change)				
			2018	2017	2016	2015	2014
One-hour sessions on Library Wifi	36,852	474,750 (+2%)	465,219 (+9%)	425,714 (+4%)	410,437 (+17%)	351,423 (+18%)	298,098 (+37%)
Desktop, Laptop, and Tablet Computers Available for Public Use	88		89 (+22%)	73	73	73	73
Sessions on Library-Provided Computers	2,218	34,577 (-24%)	45,687 (+3%)	44,181 (+6%)	41,513 (-11%)	46,405 (+6%)	43,756 (-6%)
Hours Library-Provided Computers Used (Tracking Since 2018)	1,466.43	24,280.36 (-2%)	24,701.55	0.00	0.00	0.00	0.00
Desktop, Laptop, and Tablet Computers Available for Staff Use	52		50 (+22%)	41	41	41	41

## Website Stats

December 2019

	BDL Monthly Total	BDL YTD	BDL Year End (Year-over-Year Change)				
			2018	2017	2016	2015	2014
Monthly Website Sessions	3,892	58,161 (+28%)	45,594 (-38%)	73,326 (-2%)	75,139 (+3%)	72,706 (+6%)	68,773 (-22%)
Monthly Website Page Views	8,428	129,778 (+9%)	118,634 (-33%)	177,799 (-2%)	182,084 (+7%)	169,630 (+4%)	163,277 (-8%)

## Faxes, Prints, and Sales

December 2019

	BDL Monthly Total	BDL YTD	BDL Year End (Year-over-Year Change)				
			2018	2017	2016	2015	2014
Fax Pages Received	28	350 (-16%)	419 (+61%)	260 (+19%)	219 (+27%)	173 (+3%)	168 (+20%)
Fax Pages Sent	644	9,524 (+3%)	9,249 (+138%)	3,879 (+123%)	1,741 (-7%)	1,882 (+39%)	1,353 (+1%)
Free Prints for Job Seekers	109	2,796 (-23%)	3,631 (+16%)	3,128 (+9%)	2,878 (+23%)	2,335 (-23%)	3,024 (-21%)
Black and White Patron Prints (Tracking Since 6/2016)	5,301	75,818 (-6%)	81,016 (+7%)	75,606 (+113%)	35,561	0	0
Color Patron Prints (Tracking Since 6/2016)	1,338	11,299 (-8%)	12,285 (+20%)	10,253 (+154%)	4,036	0	0
Flash Drives Sold (Tracking Since 6/2016)	1	37 (-10%)	41 (-27%)	56 (+4%)	54	0	0
Earbuds Sold (Tracking Since 6/2016)	25	462 (-14%)	538 (+29%)	416 (+151%)	166	0	0

## Fines and Fees

Overdue Fines Dropped in 2017

December 2019

	BDL Monthly Total	BDL YTD	BDL Year End (Year-over-Year Change)				
			2018	2017	2016	2015	2014
Fines and Fees Payments Received	\$ 284.70	\$ 3,092.62 (+28%)	\$ 2,412.73 (-68%)	\$ 7,628.31 (-24%)	\$ 10,062.96 (-30%)	\$ 14,448.76 (-3%)	\$ 14,827.36 (-4%)
Outstanding Fines and Fees	\$ 55,588.42		55,850.27 (-34%)	84,232.33 (-63%)	228,102.90 (+3%)	221,076.26 (+5%)	209,842.19 (+4%)

**Debt Collections**  
 Unique Management Services, Inc.  
 Tracking Since 2014

December 2019

	BDL Monthly Total	BDL YTD	BDL Year End (Year-over-Year Change)				
			2018	2017	2016	2015	2014
<b>Fine Payments as a Result of Collection Agency's Efforts</b>	\$ 0.00	\$ 268.00 (-94%)	\$ 4,183.45 (+1,727%)	\$ 229.00 (-76%)	\$ 947.13 (+16%)	\$ 818.48 (+1%)	\$ 809.51
<b>Library Materials Returned as a Result of Collection Agency's Efforts</b>	\$ 0.00	\$ 0.00	\$ 462.00 (-48%)	\$ 888.95 (-33%)	\$ 1,317.93 (-2%)	\$ 1,346.89 (-28%)	\$ 1,864.69
<b>What We Paid Collection Agency for Their Services</b>	\$ 0.00	\$ 134.10 (-75%)	\$ 528.66 (-5%)	\$ 558.08 (-45%)	\$ 1,022.23 (-3%)	\$ 1,051.42 (+40%)	\$ 753.88

**Value to Our Service Area**

Visit <https://www.BranchDistrictLibrary.org/value>  
 to learn how we determine these numbers.

December 2019

	BDL Monthly Total	BDL YTD	BDL Year End (Year-over-Year Change)				
			2018	2017	2016	2015	2014
<b>Value from Physical Item Checkouts</b>	\$ 116,991.90	\$ 1,755,554.08 (-7%)	\$ 1,888,907.75 (-12%)	\$ 2,135,671.28 (+0%)	\$ 2,132,387.79 (-2%)	\$ 2,167,140.68 (+0%)	\$ 2,167,024.48 (-9%)
<b>Value from Attending Programs (Tracking Since 1/2018)</b>	\$ 9,445.00	\$ 118,485.00 (-6%)	\$ 125,795.00	\$ 0.00	\$ 0.00	\$ 0.00	\$ 0.00
<b>Value from Fax Service (Tracking Since 1/2018)</b>	\$ 672.00	\$ 10,205.00 (+6%)	\$ 9,668.00	\$ 0.00	\$ 0.00	\$ 0.00	\$ 0.00
<b>Value from Employment Prints (Tracking Since 1/2018)</b>	\$ 16.35	\$ 419.40 (-23%)	\$ 544.65	\$ 0.00	\$ 0.00	\$ 0.00	\$ 0.00
<b>Value from Notary Services (Tracking Since 1/2018)</b>	\$ 15.00	\$ 475.00 (+44%)	\$ 330.00	\$ 0.00	\$ 0.00	\$ 0.00	\$ 0.00
<b>Value from Digital Services (Tracking Since 1/2018)</b>	\$ 9,704.00	\$ 135,824.00 (+7%)	\$ 127,476.00	\$ 0.00	\$ 0.00	\$ 0.00	\$ 0.00
<b>Value from Using Library Computers (Tracking Since 1/2018)</b>	\$ 4,399.29	\$ 72,841.08 (-2%)	\$ 74,104.66	\$ 0.00	\$ 0.00	\$ 0.00	\$ 0.00
<b>Value from Using Library Wifi (Tracking Since 1/2018)</b>	\$ 2,579.64	\$ 33,232.50 (+2%)	\$ 32,565.33	\$ 0.00	\$ 0.00	\$ 0.00	\$ 0.00
<b>TOTAL Value of Free Library Services</b>	<b>\$ 143,823.18</b>	<b>\$ 2,127,036.06 (-6%)</b>	<b>\$ 2,259,391.39 (+6%)</b>	<b>\$ 2,135,671.28 (+0%)</b>	<b>\$ 2,132,387.79 (-2%)</b>	<b>\$ 2,167,140.68 (+0%)</b>	<b>\$ 2,167,024.48 (-9%)</b>



## Materials Expenditures

Tracking since 2018

December 2019

	BDL Monthly Total	BDL YTD	BDL Year End (Year-over-Year Change)				
			2018	2017	2016	2015	2014
Amount Spent on Books	\$ 11,880.21	\$ 76,878.30 (-18%)	\$ 93,763.50	\$ 0.00	\$ 0.00	\$ 0.00	\$ 0.00
Amount Spent on Periodicals	\$ 1,768.81	\$ 5,663.99 (-20%)	\$ 7,085.59	\$ 0.00	\$ 0.00	\$ 0.00	\$ 0.00
Amount Spent on Audiovisual Materials	\$ 533.44	\$ 15,009.96 (-17%)	\$ 17,998.47	\$ 0.00	\$ 0.00	\$ 0.00	\$ 0.00
Amount Spent on Digital Resources	\$ 5,074.45	\$ 28,412.62 (-35%)	\$ 43,798.90	\$ 0.00	\$ 0.00	\$ 0.00	\$ 0.00
<b>TOTAL Spent on All Library Materials</b>	<b>\$ 19,256.91</b>	<b>\$ 125,964.87 (-23%)</b>	<b>\$ 162,646.46</b>	<b>\$ 0.00</b>	<b>\$ 0.00</b>	<b>\$ 0.00</b>	<b>\$ 0.00</b>

## Other Expenditures

Tracking since 2018

December 2019

	BDL Monthly Total	BDL YTD	BDL Year End (Year-over-Year Change)				
			2018	2017	2016	2015	2014
Total Materials Expenditures	\$ 19,256.91	\$ 125,964.87 (-23%)	\$ 162,646.46	\$ 0.00	\$ 0.00	\$ 0.00	\$ 0.00
Total Staff Expenditures	\$ 72,522.08	\$ 1,172,756.92 (-20%)	\$ 1,469,560.33	\$ 0.00	\$ 0.00	\$ 0.00	\$ 0.00
Expenditures in other categories	\$ 32,712.08	\$ 353,231.25 (-16%)	\$ 422,747.74	\$ 0.00	\$ 0.00	\$ 0.00	\$ 0.00
<b>TOTAL Expenditures in all Categories</b>	<b>\$ 157,219.01</b>	<b>\$ 1,797,240.67 (-13%)</b>	<b>\$ 2,054,954.53</b>	<b>\$ 0.00</b>	<b>\$ 0.00</b>	<b>\$ 0.00</b>	<b>\$ 0.00</b>

## Staffing

December 2019

	BDL Monthly Total	BDL YTD	BDL Year End (Year-over-Year Change)				
			2018	2017	2016	2015	2014
Total BDL Staff	36	37 (avg) (-8%)	40 (avg) (+5%)	37 (avg) (+9%)	34 (avg) (+17%)	29 (avg) (-3%)	30 (avg) (-6%)
BDL Staff with MLS Degree	5	5 (avg) (-33%)	6 (avg) (+20%)	5 (avg) (+150%)	3 (avg)	2 (avg)	2 (avg) (-33%)
Worked Full-Time Equivalents	26.98	25.78 (avg) (-4%)	26.92 (avg) (+8%)	24.91 (avg) (+41%)	17.90 (avg) (+13%)	15.75 (avg) (-6%)	16.81 (avg) (-16%)
Hours of Specialized Training for Staff (Tracking Since 1/2019)	0	534	0	0	0	0	0
Hours Volunteers Worked at the Library (Tracking Since 1/2019)	36	1,065	0	0	0	0	0

## Outreach Services

Began 2018

December 2019

	BDL Monthly Total	BDL YTD	BDL Year End (Year-over-Year Change)				
			2018	2017	2016	2015	2014
Number of Patrons Served by Outreach Services	7	70 (-8%)	76 (+2,433%)	3	0	0	0
Number of Items Delivered to Outreach Patrons	14	220 (-64%)	606 (+2,231%)	26	0	0	0

### Coldwater Branch Heritage Room

Stats part of Coldwater Branch totals above; shown here for convenience.

December 2019

	Heritage Room	BDL YTD	BDL Year End (Year-over-Year Change)				
			2018	2017	2016	2015	2014
Heritage Room Attendance	44	484 (-34%)	736 (+12%)	658 (-7%)	705 (+51%)	468 (+50%)	312
In-Person Reference Questions	39	412 (-42%)	708 (+29%)	550 (+664%)	72 (+140%)	30 (-27%)	41 (+71%)
Reference Telephone Calls	13	232 (-16%)	277 (-36%)	433 (+15%)	376 (+83%)	206 (+145%)	84
Online Reference Questions	4	65 (+8%)	60 (-5%)	63 (-24%)	83 (+8%)	77 (+79%)	43

### Coldwater Branch Kids' Place

Stats part of Coldwater Branch totals above; shown here for convenience.  
Tracking separately since April 2019.

December 2019

	Kids' Place	BDL YTD	BDL Year End (Year-over-Year Change)				
			2018	2017	2016	2015	2014
Kids' Place Attendance	612	9,710	0	0	0	0	0
In-Person Reference Questions	30	575	0	0	0	0	0
Reference Telephone Calls	21	224	0	0	0	0	0
Online Reference Questions	0	0	0	0	0	0	0

### Coldwater Branch Teen Space

Stats part of Coldwater Branch totals above; shown here for convenience.  
Tracking separately since April 2019.

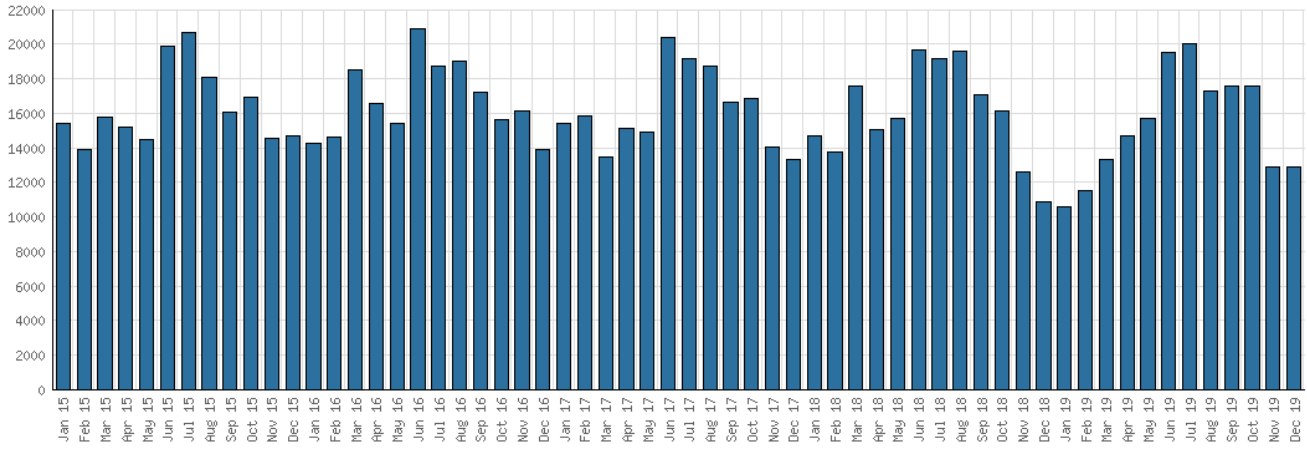
December 2019

	Teen Space	BDL YTD	BDL Year End (Year-over-Year Change)				
			2018	2017	2016	2015	2014
Teen Space Attendance	0	4,172	0	0	0	0	0
In-Person Reference Questions	0	93	0	0	0	0	0
Reference Telephone Calls	0	0	0	0	0	0	0
Online Reference Questions	0	0	0	0	0	0	0

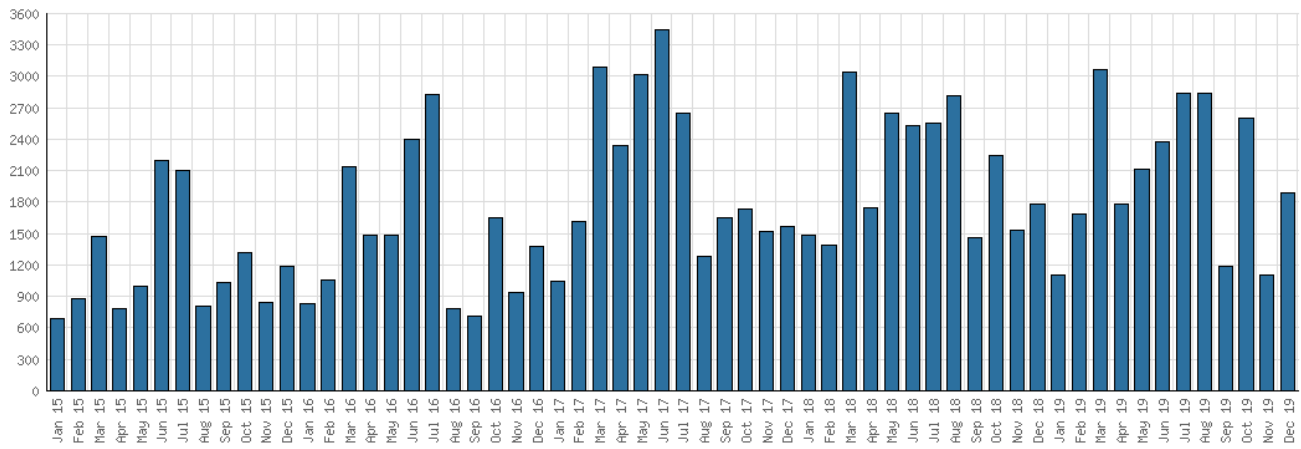
## Selected Graphs

### 5-year Monthly Trends

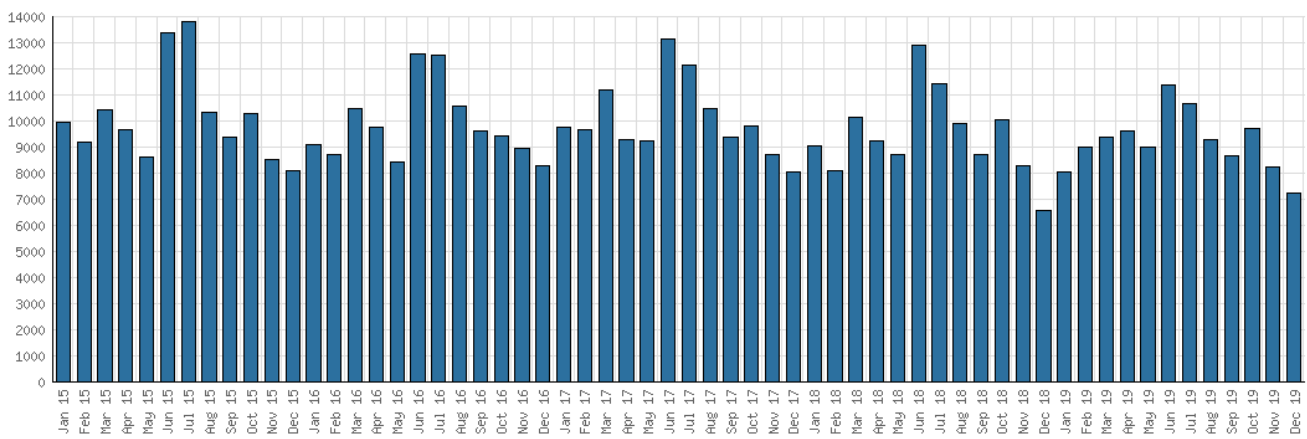
#### District Attendance



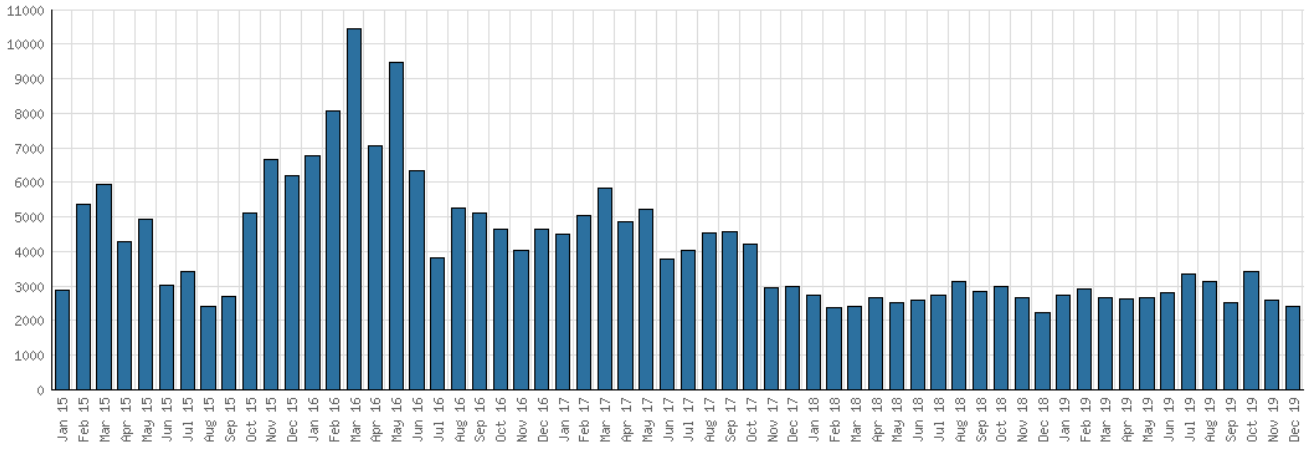
#### District Program Attendance



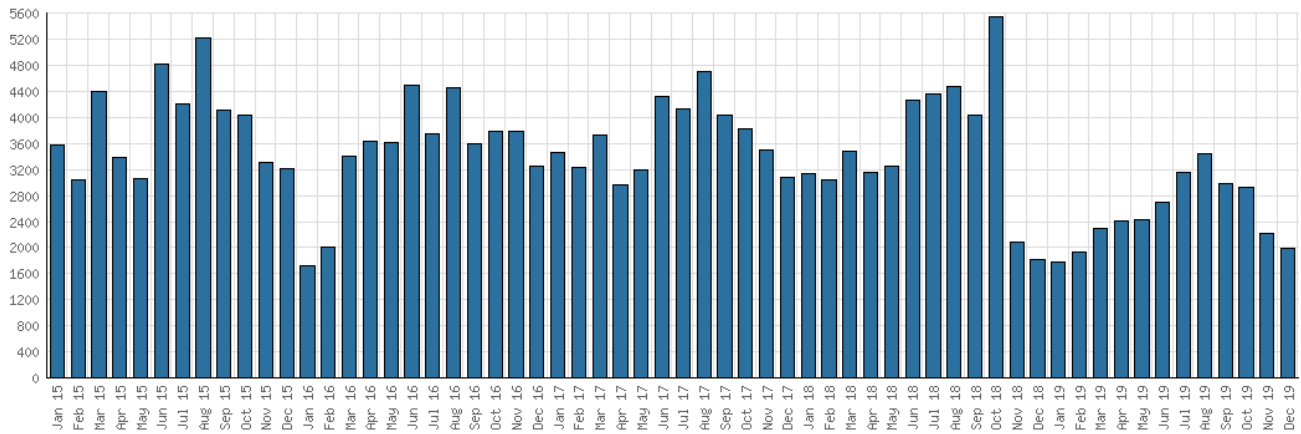
#### District Physical Checkouts



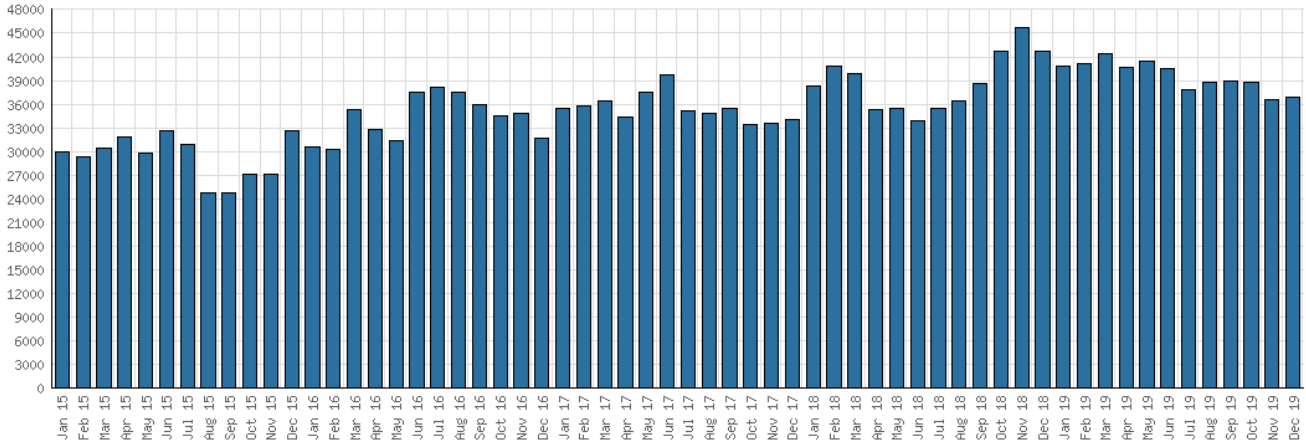
District Digital Usage



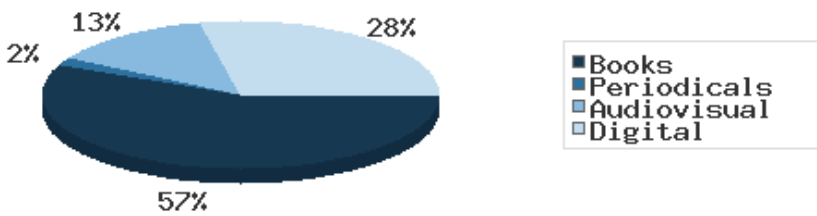
District Use of Library-Provided Computers



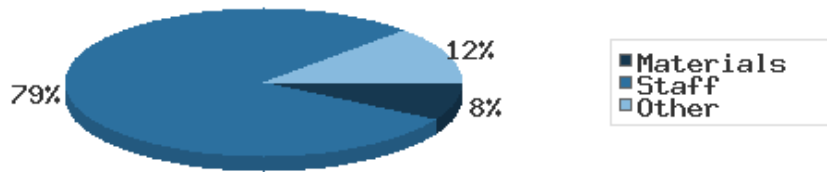
District One-Hour Sessions on Library Wifi



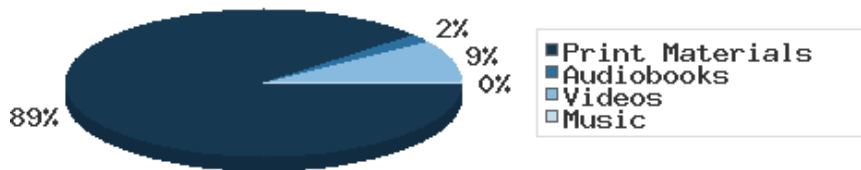
Year-to-Date Materials Expenditures



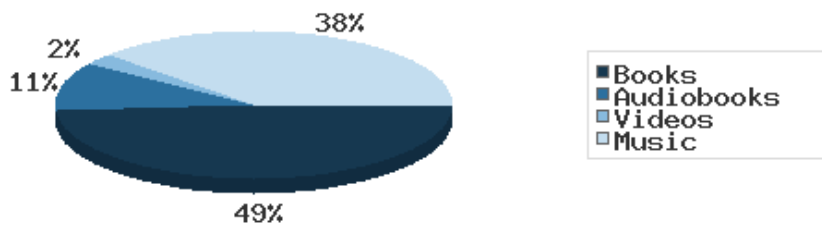
### YTD Expenditures in all Categories



### Physical Collection



### Digital Collection



### YTD Usage Breakdown of Digital Services

