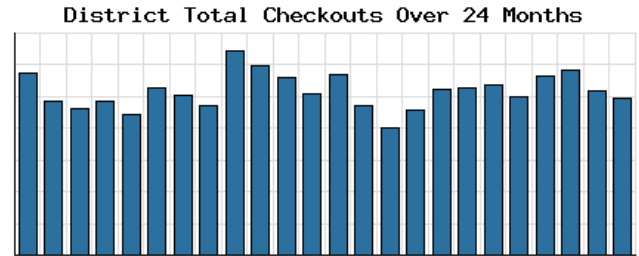
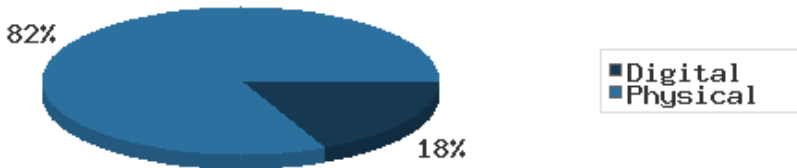


## Monthly Stats Brief Narrative

Through September 2019, the number of patrons entering our buildings somewhat decreased system-wide compared to this same time year-to-date the previous year. Combined physical and digital use of library materials stayed about the same year-to-date compared to 2018. About 10% of our registered cardholders checked out a physical item this past month, while about 2% of registered cardholders checked out a digital item.



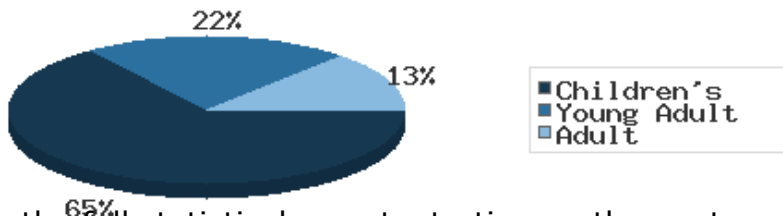
Digital vs. Physical Circulation YTD



Digital usage has comprised about 18% of total materials use year-to-date through September 2019, and digital usage somewhat increased from this time in 2018.

In September 2019, BDL patrons saved \$137,832.40 by checking out 12,226 physical items from the library. Our programming for all ages and our digital services further increase the library's value to the community, bringing the total estimated value to \$164,608.98.

Programs Offered in 2019 YTD



Compared to this time year-to-date 2018, the number of programs BDL offered has somewhat increased. Attendance at programs slightly decreased over this same period.

See the full statistical report, starting on the next page, for details and more graphs. The most up-to-date stats are always available online and interactive at <https://www.BranchDistrictLibrary.org/stats>.

**Attendance**  
September 2019

	BDL Monthly Total	BDL YTD	BDL Year End (Year-over-Year Change)				
			2018	2017	2016	2015	2014
<b>Attendance</b>	15,659	129,671 (-15%)	191,866 (-1%)	193,922 (-4%)	200,991 (+3%)	195,735 (+17%)	167,414 (-2%)
<b>Hours Open</b>	958.75	8,639.25 (-8%)	12,312.00 (+13%)	10,869.15 (-0%)	10,877.50 (+25%)	8,703.00 (+61%)	5,395.00 (+3%)
<b>Number of Hours Scheduled Open Each Week (Tracking Since 1/2018)</b>	251.00		255.00	0.00	0.00	0.00	0.00

**Patrons**  
September 2019

	BDL Monthly Total	BDL YTD	BDL Year End (Year-over-Year Change)				
			2018	2017	2016	2015	2014
<b>Population in our Service Area (Tracking Since 2018)</b>	44,926	45,148 (avg) (+0%)	44,926 (avg)	0 (avg)	0 (avg)	0 (avg)	0 (avg)
<b>Library Card Holders</b>	20,592	20,415 (avg) (-6%)	20,166 (avg) (-21%)	25,685 (avg) (+3%)	24,899 (avg) (+4%)	23,974 (avg) (+5%)	22,879 (avg) (+5%)
<b>Patrons Who Checked Out a Physical Item</b>	2,077	2,179 (avg) (-3%)	1,896 (avg) (+0%)	1,887 (avg) (-7%)	2,030 (avg) (-2%)	2,069 (avg) (-2%)	2,109 (avg) (-10%)
<b>New Library Card Holders Added</b>	40	475 (-35%)	1,021 (+21%)	844 (-15%)	989 (-9%)	1,086 (-22%)	1,390 (+22%)
<b>In-House Holds Filled for Our Library Card Holders</b>	852	8,138 (-3%)	10,987 (-6%)	11,650 (+12%)	10,407 (+2%)	10,225 (+7%)	9,546 (-16%)
<b>Active Hoopla Users (Began 2016)</b>	292	294 (avg) (+18%)	262 (avg) (+39%)	189 (avg) (+47%)	129 (avg)	0 (avg)	0 (avg)
<b>Active OverDrive Users</b>	211	211 (avg) (+21%)	197 (avg) (+26%)	156 (avg) (+16%)	134 (avg) (-7%)	144 (avg) (+7%)	134 (avg) (+20%)

**Physical Collection**  
Tracking Item-Type Breakdown Since 8/2017  
September 2019

	BDL Monthly Total	BDL YTD	BDL Year End (Year-over-Year Change)				
			2018	2017	2016	2015	2014
<b>Physical Books and All other Print Materials in the Catalog</b>	99,406		100,253 (-0%)	100,293	0	0	0
<b>Physical Audiobooks in the Catalog</b>	1,774		1,881 (+2%)	1,852	0	0	0
<b>Physical Video Materials in the Catalog</b>	11,179		10,579 (+1%)	10,519	0	0	0
<b>Physical Music Recordings in the Catalog</b>	188		337 (-2%)	345	0	0	0
<b>TOTAL Physical Items in the Catalog</b>	<b>112,508</b>		<b>113,050 (+0%)</b>	<b>113,009 (-11%)</b>	<b>126,407 (-4%)</b>	<b>131,432 (+1%)</b>	<b>130,210 (+1%)</b>

## Digital Collection

Tracking Since 8/2017

September 2019

	BDL Monthly Total	BDL YTD	BDL Year End (Year-over-Year Change)				
			2018	2017	2016	2015	2014
Ebooks in All Digital Collections	360,083		306,595 (+33%)	230,178	0	0	0
Audiobooks in All Digital Collections	79,977		71,995 (+36%)	52,833	0	0	0
Video Materials in All Digital Collections	15,735		14,229 (-10%)	15,767	0	0	0
Music Recordings in All Digital Collections	248,350		239,705 (-14%)	280,259	0	0	0
<b>TOTAL of All Digital Collections</b>	<b>704,145</b>		<b>632,524 (+9%)</b>	<b>579,037</b>	<b>0</b>	<b>0</b>	<b>0</b>

## Total Collection

Tracking Since 8/2017

September 2019

	BDL Monthly Total	BDL YTD	BDL Year End (Year-over-Year Change)				
			2018	2017	2016	2015	2014
Combined Physical Items	112,508		113,050 (+0%)	113,009 (-11%)	126,407 (-4%)	131,432 (+1%)	130,210 (+1%)
Combined Digital Collections	704,145		632,524 (+9%)	579,037	0	0	0
<b>TOTAL of all Collections</b>	<b>816,653</b>		<b>745,574 (+8%)</b>	<b>692,046 (+447%)</b>	<b>126,407 (-4%)</b>	<b>131,432 (+1%)</b>	<b>130,210 (+1%)</b>

## Use of Physical Items

September 2019

	BDL Monthly Total	BDL YTD	BDL Year End (Year-over-Year Change)				
			2018	2017	2016	2015	2014
Checkouts of Cataloged Items	8,668	85,094 (-4%)	113,128 (-6%)	120,916 (+2%)	118,595 (-3%)	121,841 (-1%)	123,074 (-11%)
Renewals of Cataloged Items	1,205	10,399 (+5%)	13,607 (-8%)	14,804 (-4%)	15,480 (+0%)	15,434 (-4%)	16,044 (-2%)
Items Used in the Library But Not Checked Out	355	3,295 (+63%)	2,803 (-8%)	3,050 (+126%)	1,351 (+7,011%)	19 (-68%)	60
Checkouts of Uncataloged Items	379	2,642 (-14%)	3,904 (+38%)	2,839 (-38%)	4,578 (+4%)	4,385 (-5%)	4,601 (-8%)
Requests from BDL Patrons for Items at Other MeLCat Libraries, Actually Fulfilled	890	7,678 (+4%)	9,777 (+20%)	8,169 (+15%)	7,112 (+16%)	6,118 (+8%)	5,677 (-10%)
Requests from Other MeLCat Libraries for Items at BDL, Actually Fulfilled	729	6,000 (-16%)	9,810 (+25%)	7,867 (+11%)	7,068 (+46%)	4,855 (-10%)	5,400 (-42%)
<b>TOTAL Use of Physical Items</b>	<b>12,226</b>	<b>115,108 (-2%)</b>	<b>153,029 (-3%)</b>	<b>157,645 (+2%)</b>	<b>154,184 (+1%)</b>	<b>152,652 (-1%)</b>	<b>154,856 (-12%)</b>

## Use of Digital Resources

September 2019

	BDL Monthly Total	BDL YTD	BDL Year End (Year-over-Year Change)				
			2018	2017	2016	2015	2014
OverDrive Checkouts	918	8,068 (+15%)	9,501 (+21%)	7,823 (+4%)	7,502 (+2%)	7,380 (+12%)	6,615 (+17%)
Hoopla Checkouts (Began 2016)	953	9,654 (-0%)	12,796 (+20%)	10,669 (+96%)	5,432	0	0
All Other Digital Services	665	7,796 (+6%)	9,572 (-72%)	34,047 (-46%)	62,788 (+38%)	45,565 (+203%)	15,031 (+26%)
<b>TOTAL Use of Digital Resources</b>	<b>2,536</b>	<b>25,518 (+6%)</b>	<b>31,869 (-39%)</b>	<b>52,539 (-31%)</b>	<b>75,722 (+43%)</b>	<b>52,945 (+145%)</b>	<b>21,646 (+23%)</b>

## Total Item Usage

September 2019

	BDL Monthly Total	BDL YTD	BDL Year End (Year-over-Year Change)				
			2018	2017	2016	2015	2014
Combined Checkouts of Physical Items	12,226	115,108 (-2%)	153,029 (-3%)	157,645 (+2%)	154,184 (+1%)	152,652 (-1%)	154,856 (-12%)
Combined Use of Digital Resources	2,536	25,518 (+6%)	31,869 (-39%)	52,539 (-31%)	75,722 (+43%)	52,945 (+145%)	21,646 (+23%)
<b>TOTAL Uses of All BDL Items</b>	<b>14,762</b>	<b>140,626 (-1%)</b>	<b>184,898 (-12%)</b>	<b>210,184 (-9%)</b>	<b>229,906 (+12%)</b>	<b>205,597 (+16%)</b>	<b>176,502 (-8%)</b>

## Cataloging

September 2019

	BDL Monthly Total	BDL YTD	BDL Year End (Year-over-Year Change)				
			2018	2017	2016	2015	2014
Physical Items Added to the Catalog	609	7,683 (-12%)	11,056 (+0%)	11,009 (-1%)	11,091 (+29%)	8,582 (+40%)	6,134 (+1%)
Physical Items Deleted from the Catalog	1,350	8,230 (+1%)	10,941 (-55%)	24,366 (+53%)	15,968 (+84%)	8,668 (+40%)	6,186 (+30%)

## Reference Questions

September 2019

	BDL Monthly Total	BDL YTD	BDL Year End (Year-over-Year Change)				
			2018	2017	2016	2015	2014
General Reference Questions in Person	795	6,735 (+32%)	6,641 (-12%)	7,537 (+20%)	6,285 (+124%)	2,806 (-0%)	2,809 (-22%)
Questions via Telephone Calls	385	3,073 (-0%)	3,866 (-24%)	5,079 (+10%)	4,622 (+60%)	2,885 (+0%)	2,872 (+18%)
Reference Questions Delivered Online	16	244 (+109%)	152 (-35%)	233 (-23%)	304 (+34%)	227 (+77%)	128 (+184%)
In-Person Questions on Computer or Internet Use	697	6,027 (+15%)	7,068 (-3%)	7,285 (+11%)	6,568 (+18%)	5,551 (+36%)	4,076 (+9%)
In-Person Questions about Our Online Databases	13	315 (-5%)	409 (+13%)	363 (+114%)	170 (+85%)	92 (-24%)	121 (-41%)
In-Person Tax Form Questions	7	323 (-38%)	518 (+5%)	493 (+4%)	473 (-18%)	579 (+3%)	560 (+5%)
<b>TOTAL of All Reference Questions</b>	<b>1,913</b>	<b>16,717 (+16%)</b>	<b>18,654 (-11%)</b>	<b>20,990 (+14%)</b>	<b>18,422 (+52%)</b>	<b>12,140 (+15%)</b>	<b>10,566 (-0%)</b>

## Notary Services

Began 9/2017 at Coldwater Only

September 2019

	BDL Monthly Total	BDL YTD	BDL Year End (Year-over-Year Change)				
			2018	2017	2016	2015	2014
Patrons Who Used our Free Notary Services	7	82 (+46%)	66 (+371%)	14	0	0	0
Documents Notarized	3	107 (+102%)	67 (+253%)	19	0	0	0

**MeLCat**  
September 2019

	BDL Monthly Total	BDL YTD	BDL Year End (Year-over-Year Change)				
			2018	2017	2016	2015	2014
Requests from BDL Patrons for Items at Other MeLCat Libraries	943	7,515 (-5%)	10,462 (+20%)	8,699 (+14%)	7,643 (+5%)	7,280 (+9%)	6,708 (-8%)
Requests from BDL Patrons for Items at Other MeLCat Libraries, Actually Fulfilled	890	7,678 (+4%)	9,777 (+20%)	8,169 (+15%)	7,112 (+16%)	6,118 (+8%)	5,677 (-10%)
Requests from Other MeLCat Libraries for Items at BDL	779	6,535 (-13%)	10,296 (+29%)	7,994 (+13%)	7,096 (+18%)	5,989 (-10%)	6,619 (-33%)
Requests from Other MeLCat Libraries for Items at BDL, Actually Fulfilled	729	6,000 (-16%)	9,810 (+25%)	7,867 (+11%)	7,068 (+46%)	4,855 (-10%)	5,400 (-42%)

**Programs Held**  
September 2019

	BDL Monthly Total	BDL YTD	BDL Year End (Year-over-Year Change)				
			2018	2017	2016	2015	2014
Juvenile Programs Held	52	571 (+14%)	730 (+1%)	720 (+19%)	604 (+5%)	575 (+19%)	482 (+3%)
Young Adult Programs Held	28	185 (-30%)	338 (+41%)	239 (+47%)	163 (+8%)	151 (+20%)	126 (+157%)
Adult Programs Held	13	114 (+9%)	136 (-7%)	146 (-34%)	220 (+40%)	157 (+26%)	125 (+44%)
Juvenile Summer Reading Events Held	0	173 (+52%)	114 (+20%)	95 (+7%)	89 (+6%)	84 (+8%)	78
Young Adult Summer Reading Events Held	0	61 (+24%)	49 (-14%)	57 (+97%)	29 (-66%)	85 (+183%)	30
Adult Summer Reading Events Held	0	17 (+467%)	3	0	3 (-40%)	5 (+25%)	4
Computer Classes Held	2	20 (+33%)	20 (-9%)	22 (+57%)	14 (-36%)	22 (-8%)	24
<b>TOTAL of All Programs</b>	<b>95</b>	<b>1,141 (+9%)</b>	<b>1,390 (+9%)</b>	<b>1,279 (+14%)</b>	<b>1,122 (+4%)</b>	<b>1,079 (+24%)</b>	<b>869 (+43%)</b>

**Program Attendance**  
September 2019

	BDL Monthly Total	BDL YTD	BDL Year End (Year-over-Year Change)				
			2018	2017	2016	2015	2014
Attendees at Juvenile Programs	792	10,624 (-5%)	15,725 (+2%)	15,351 (+48%)	10,371 (+23%)	8,415 (+7%)	7,857 (-11%)
Attendees at Young Adult Programs	249	1,693 (-39%)	3,218 (-15%)	3,806 (+276%)	1,011 (+14%)	884 (+38%)	641 (+36%)
Attendees at Adult Programs	140	1,856 (+34%)	1,970 (-0%)	1,979 (-3%)	2,048 (-5%)	2,157 (+65%)	1,310 (+18%)
Attendees at Juvenile Summer Reading Events	0	4,186 (+8%)	3,864 (+24%)	3,116 (-20%)	3,904 (+56%)	2,499 (-21%)	3,159
Attendees at Young Adult Summer Reading Events	0	279 (-16%)	333 (-50%)	671 (+127%)	295 (+14%)	259 (-16%)	307
Attendees at Adult Summer Reading Events	0	310 (+265%)	85	0	21 (-73%)	77 (-31%)	111
Attendees at Computer Classes	2	20 (+33%)	20 (-5%)	21 (+75%)	12 (-59%)	29 (+4%)	28
<b>TOTAL of All Program Attendance</b>	<b>1,183</b>	<b>18,968 (-4%)</b>	<b>25,215 (+1%)</b>	<b>24,944 (+41%)</b>	<b>17,662 (+23%)</b>	<b>14,320 (+7%)</b>	<b>13,413 (+28%)</b>

## Summer Reading Overview

September 2019

	BDL Monthly Total	BDL YTD	BDL Year End (Year-over-Year Change)				
			2018	2017	2016	2015	2014
Juveniles Signed Up for Summer Reading Program	0	711 (-5%)	747 (-35%)	1,153 (+19%)	967 (+13%)	859	0
Young Adults Signed up for Summer Reading Program	0	134 (-65%)	378 (-2%)	385 (+241%)	113 (-64%)	311	0
Adults Signed Up for Summer Reading Program	0	159 (-36%)	248 (+112%)	117 (+36%)	86 (+1%)	85	0
Juveniles who Completed Summer Reading Program	0	385 (+48%)	260 (-50%)	518 (+13%)	459 (-10%)	512	0
Young Adults who Completed Summer Reading Program	0	79 (-41%)	135 (-50%)	268 (+332%)	62 (-49%)	122	0
Adults who Completed Summer Reading Program	0	118 (-28%)	165 (+72%)	96 (+60%)	60 (+7%)	56	0
Juvenile Summer Reading Events Held	0	173 (+52%)	114 (+20%)	95 (+7%)	89 (+6%)	84 (+8%)	78
Young Adult Summer Reading Events Held	0	61 (+24%)	49 (-14%)	57 (+97%)	29 (-66%)	85 (+183%)	30
Adult Summer Reading Events Held	0	17 (+467%)	3	0	3 (-40%)	5 (+25%)	4
Attendees at Juvenile Summer Reading Events	0	4,186 (+8%)	3,864 (+24%)	3,116 (-20%)	3,904 (+56%)	2,499 (-21%)	3,159
Attendees at Young Adult Summer Reading Events	0	279 (-16%)	333 (-50%)	671 (+127%)	295 (+14%)	259 (-16%)	307
Attendees at Adult Summer Reading Events	0	310 (+265%)	85	0	21 (-73%)	77 (-31%)	111

## Summer Reading Program Signups

September 2019

	BDL Monthly Total	BDL YTD	BDL Year End (Year-over-Year Change)				
			2018	2017	2016	2015	2014
Juveniles Signed Up for Summer Reading Program	0	711 (-5%)	747 (-35%)	1,153 (+19%)	967 (+13%)	859	0
Young Adults Signed up for Summer Reading Program	0	134 (-65%)	378 (-2%)	385 (+241%)	113 (-64%)	311	0
Adults Signed Up for Summer Reading Program	0	159 (-36%)	248 (+112%)	117 (+36%)	86 (+1%)	85	0
<b>TOTAL Summer Reading Program Signups</b>	<b>0</b>	<b>1,004 (-27%)</b>	<b>1,373 (-17%)</b>	<b>1,655 (+42%)</b>	<b>1,166 (-7%)</b>	<b>1,255</b>	<b>0</b>

## Summer Reading Program Completions

September 2019

	BDL Monthly Total	BDL YTD	BDL Year End (Year-over-Year Change)				
			2018	2017	2016	2015	2014
Juveniles who Completed Summer Reading Program	0	385 (+48%)	260 (-50%)	518 (+13%)	459 (-10%)	512	0
Young Adults who Completed Summer Reading Program	0	79 (-41%)	135 (-50%)	268 (+332%)	62 (-49%)	122	0
Adults who Completed Summer Reading Program	0	118 (-28%)	165 (+72%)	96 (+60%)	60 (+7%)	56	0
<b>TOTAL Summer Reading Program Completions</b>	<b>0</b>	<b>582 (+4%)</b>	<b>560 (-37%)</b>	<b>882 (+52%)</b>	<b>581 (-16%)</b>	<b>690</b>	<b>0</b>

## Library-Provided Computer Services

September 2019

	BDL Monthly Total	BDL YTD	BDL Year End (Year-over-Year Change)				
			2018	2017	2016	2015	2014
One-hour sessions on Library Wifi	38,961	362,591 (+9%)	465,219 (+9%)	425,714 (+4%)	410,437 (+17%)	351,423 (+18%)	298,098 (+37%)
Desktop, Laptop, and Tablet Computers Available for Public Use	88		89 (+22%)	73	73	73	73
Sessions on Library-Provided Computers	3,339	26,549 (-25%)	45,687 (+3%)	44,181 (+6%)	41,513 (-11%)	46,405 (+6%)	43,756 (-6%)
Hours Library-Provided Computers Used (Tracking Since 2018)	2,364.92	18,850.18 (+7%)	24,701.55	0.00	0.00	0.00	0.00
Desktop, Laptop, and Tablet Computers Available for Staff Use	53		50 (+22%)	41	41	41	41

## Website Stats

September 2019

	BDL Monthly Total	BDL YTD	BDL Year End (Year-over-Year Change)				
			2018	2017	2016	2015	2014
Monthly Website Sessions	4,833	45,100 (+32%)	45,594 (-38%)	73,326 (-2%)	75,139 (+3%)	72,706 (+6%)	68,773 (-22%)
Monthly Website Page Views	10,633	101,663 (+13%)	118,634 (-33%)	177,799 (-2%)	182,084 (+7%)	169,630 (+4%)	163,277 (-8%)

## Faxes, Prints, and Sales

September 2019

	BDL Monthly Total	BDL YTD	BDL Year End (Year-over-Year Change)				
			2018	2017	2016	2015	2014
Fax Pages Received	19	269 (-20%)	419 (+61%)	260 (+19%)	219 (+27%)	173 (+3%)	168 (+20%)
Fax Pages Sent	812	7,431 (+3%)	9,249 (+138%)	3,879 (+123%)	1,741 (-7%)	1,882 (+39%)	1,353 (+1%)
Free Prints for Job Seekers	197	2,214 (-21%)	3,631 (+16%)	3,128 (+9%)	2,878 (+23%)	2,335 (-23%)	3,024 (-21%)
Black and White Patron Prints (Tracking Since 6/2016)	7,418	58,557 (-9%)	81,016 (+7%)	75,606 (+113%)	35,561	0	0
Color Patron Prints (Tracking Since 6/2016)	809	8,391 (-6%)	12,285 (+20%)	10,253 (+154%)	4,036	0	0
Flash Drives Sold (Tracking Since 6/2016)	6	32 (+3%)	41 (-27%)	56 (+4%)	54	0	0
Earbuds Sold (Tracking Since 6/2016)	43	372 (-11%)	538 (+29%)	416 (+151%)	166	0	0

## Fines and Fees

Overdue Fines Dropped in 2017

September 2019

	BDL Monthly Total	BDL YTD	BDL Year End (Year-over-Year Change)				
			2018	2017	2016	2015	2014
Fines and Fees Payments Received	\$ 126.10	\$ 2,421.23 (+27%)	\$ 2,412.73 (-68%)	\$ 7,628.31 (-24%)	\$ 10,062.96 (-30%)	\$ 14,448.76 (-3%)	\$ 14,827.36 (-4%)
Outstanding Fines and Fees	\$ 53,299.94		55,850.27 (-34%)	84,232.33 (-63%)	228,102.90 (+3%)	221,076.26 (+5%)	209,842.19 (+4%)

**Debt Collections**  
 Unique Management Services, Inc.  
 Tracking Since 2014

September 2019

	BDL Monthly Total	BDL YTD	BDL Year End (Year-over-Year Change)				
			2018	2017	2016	2015	2014
<b>Fine Payments as a Result of Collection Agency's Efforts</b>	\$ 0.00	\$ 268.00 (-59%)	\$ 4,183.45 (+1,727%)	\$ 229.00 (-76%)	\$ 947.13 (+16%)	\$ 818.48 (+1%)	\$ 809.51
<b>Library Materials Returned as a Result of Collection Agency's Efforts</b>	\$ 0.00	\$ 0.00	\$ 462.00 (-48%)	\$ 888.95 (-33%)	\$ 1,317.93 (-2%)	\$ 1,346.89 (-28%)	\$ 1,864.69
<b>What We Paid Collection Agency for Their Services</b>	\$ 0.00	\$ 134.10 (-49%)	\$ 528.66 (-5%)	\$ 558.08 (-45%)	\$ 1,022.23 (-3%)	\$ 1,051.42 (+40%)	\$ 753.88

**Value to Our Service Area**

Visit <https://www.BranchDistrictLibrary.org/value>  
 to learn how we determine these numbers.

September 2019

	BDL Monthly Total	BDL YTD	BDL Year End (Year-over-Year Change)				
			2018	2017	2016	2015	2014
<b>Value from Physical Item Checkouts</b>	\$ 137,832.40	\$ 1,357,947.68 (-7%)	\$ 1,888,907.75 (-12%)	\$ 2,135,671.28 (+0%)	\$ 2,132,387.79 (-2%)	\$ 2,167,140.68 (+0%)	\$ 2,167,024.48 (-9%)
<b>Value from Attending Programs (Tracking Since 1/2018)</b>	\$ 5,915.00	\$ 92,800.00 (-5%)	\$ 125,795.00	\$ 0.00	\$ 0.00	\$ 0.00	\$ 0.00
<b>Value from Fax Service (Tracking Since 1/2018)</b>	\$ 831.00	\$ 8,031.00 (+7%)	\$ 9,668.00	\$ 0.00	\$ 0.00	\$ 0.00	\$ 0.00
<b>Value from Employment Prints (Tracking Since 1/2018)</b>	\$ 29.55	\$ 332.10 (-21%)	\$ 544.65	\$ 0.00	\$ 0.00	\$ 0.00	\$ 0.00
<b>Value from Notary Services (Tracking Since 1/2018)</b>	\$ 35.00	\$ 410.00 (+46%)	\$ 330.00	\$ 0.00	\$ 0.00	\$ 0.00	\$ 0.00
<b>Value from Digital Services (Tracking Since 1/2018)</b>	\$ 10,144.00	\$ 102,072.00 (+6%)	\$ 127,476.00	\$ 0.00	\$ 0.00	\$ 0.00	\$ 0.00
<b>Value from Using Library Computers (Tracking Since 1/2018)</b>	\$ 7,094.76	\$ 56,550.54 (+7%)	\$ 74,104.66	\$ 0.00	\$ 0.00	\$ 0.00	\$ 0.00
<b>Value from Using Library Wifi (Tracking Since 1/2018)</b>	\$ 2,727.27	\$ 25,381.37 (+9%)	\$ 32,565.33	\$ 0.00	\$ 0.00	\$ 0.00	\$ 0.00
<b>TOTAL Value of Free Library Services</b>	<b>\$ 164,608.98</b>	<b>\$ 1,643,524.69 (-5%)</b>	<b>\$ 2,259,391.39 (+6%)</b>	<b>\$ 2,135,671.28 (+0%)</b>	<b>\$ 2,132,387.79 (-2%)</b>	<b>\$ 2,167,140.68 (+0%)</b>	<b>\$ 2,167,024.48 (-9%)</b>



## Materials Expenditures

Tracking since 2018

September 2019

	BDL Monthly Total	BDL YTD	BDL Year End (Year-over-Year Change)				
			2018	2017	2016	2015	2014
Amount Spent on Books	\$ 4,019.28	\$ 58,546.59 (-21%)	\$ 93,763.50	\$ 0.00	\$ 0.00	\$ 0.00	\$ 0.00
Amount Spent on Periodicals	\$ 0.00	\$ 1,061.54 (-47%)	\$ 7,085.59	\$ 0.00	\$ 0.00	\$ 0.00	\$ 0.00
Amount Spent on Audiovisual Materials	\$ 1,166.19	\$ 11,259.54 (-14%)	\$ 17,998.47	\$ 0.00	\$ 0.00	\$ 0.00	\$ 0.00
Amount Spent on Digital Resources	\$ 1,800.14	\$ 20,160.06 (-43%)	\$ 43,798.90	\$ 0.00	\$ 0.00	\$ 0.00	\$ 0.00
<b>TOTAL Spent on All Library Materials</b>	<b>\$ 6,985.61</b>	<b>\$ 91,027.73 (-27%)</b>	<b>\$ 162,646.46</b>	<b>\$ 0.00</b>	<b>\$ 0.00</b>	<b>\$ 0.00</b>	<b>\$ 0.00</b>

## Other Expenditures

Tracking since 2018

September 2019

	BDL Monthly Total	BDL YTD	BDL Year End (Year-over-Year Change)				
			2018	2017	2016	2015	2014
Total Materials Expenditures	\$ 6,985.61	\$ 91,027.73 (-27%)	\$ 162,646.46	\$ 0.00	\$ 0.00	\$ 0.00	\$ 0.00
Total Staff Expenditures	\$ 72,550.55	\$ 900,253.43 (-17%)	\$ 1,469,560.33	\$ 0.00	\$ 0.00	\$ 0.00	\$ 0.00
Expenditures in other categories	\$ 55,410.25	\$ 276,397.29 (-19%)	\$ 422,747.74	\$ 0.00	\$ 0.00	\$ 0.00	\$ 0.00
<b>TOTAL Expenditures in all Categories</b>	<b>\$ 155,959.13</b>	<b>\$ 1,361,990.47 (-12%)</b>	<b>\$ 2,054,954.53</b>	<b>\$ 0.00</b>	<b>\$ 0.00</b>	<b>\$ 0.00</b>	<b>\$ 0.00</b>

## Staffing

September 2019

	BDL Monthly Total	BDL YTD	BDL Year End (Year-over-Year Change)				
			2018	2017	2016	2015	2014
Total BDL Staff	36	37 (avg) (-5%)	40 (avg) (+5%)	37 (avg) (+9%)	34 (avg) (+17%)	29 (avg) (-3%)	30 (avg) (-6%)
BDL Staff with MLS Degree	4	5 (avg) (-33%)	6 (avg) (+20%)	5 (avg) (+150%)	3 (avg)	2 (avg)	2 (avg) (-33%)
Worked Full-Time Equivalents	25.82	26.22 (avg) (-4%)	26.92 (avg) (+8%)	24.91 (avg) (+41%)	17.90 (avg) (+13%)	15.75 (avg) (-6%)	16.81 (avg) (-16%)
Hours of Specialized Training for Staff (Tracking Since 1/2019)	8	200	0	0	0	0	0
Hours Volunteers Worked at the Library (Tracking Since 1/2019)	155	980	0	0	0	0	0

## Outreach Services

Began 2018

September 2019

	BDL Monthly Total	BDL YTD	BDL Year End (Year-over-Year Change)				
			2018	2017	2016	2015	2014
Number of Patrons Served by Outreach Services	2	63 (+26%)	76 (+2,433%)	3	0	0	0
Number of Items Delivered to Outreach Patrons	18	204 (-48%)	606 (+2,231%)	26	0	0	0

### Coldwater Branch Heritage Room

Stats part of Coldwater Branch totals above; shown here for convenience.

September 2019

	Heritage Room	BDL YTD	BDL Year End (Year-over-Year Change)				
			2018	2017	2016	2015	2014
Heritage Room Attendance	41	353 (-43%)	736 (+12%)	658 (-7%)	705 (+51%)	468 (+50%)	312
In-Person Reference Questions	35	318 (-41%)	708 (+29%)	550 (+664%)	72 (+140%)	30 (-27%)	41 (+71%)
Reference Telephone Calls	22	181 (-21%)	277 (-36%)	433 (+15%)	376 (+83%)	206 (+145%)	84
Online Reference Questions	6	54 (+15%)	60 (-5%)	63 (-24%)	83 (+8%)	77 (+79%)	43

### Coldwater Branch Kids' Place

Stats part of Coldwater Branch totals above; shown here for convenience.  
Tracking separately since April 2019.

September 2019

	Kids' Place	BDL YTD	BDL Year End (Year-over-Year Change)				
			2018	2017	2016	2015	2014
Kids' Place Attendance	964	7,042	0	0	0	0	0
In-Person Reference Questions	67	417	0	0	0	0	0
Reference Telephone Calls	35	170	0	0	0	0	0
Online Reference Questions	0	0	0	0	0	0	0

### Coldwater Branch Teen Space

Stats part of Coldwater Branch totals above; shown here for convenience.  
Tracking separately since April 2019.

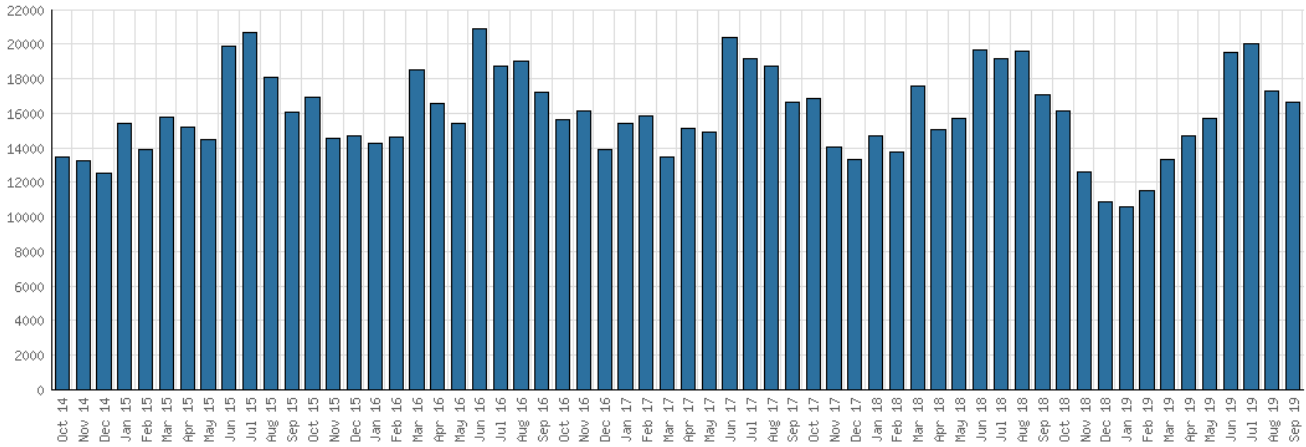
September 2019

	Teen Space	BDL YTD	BDL Year End (Year-over-Year Change)				
			2018	2017	2016	2015	2014
Teen Space Attendance	0	2,614	0	0	0	0	0
In-Person Reference Questions	0	80	0	0	0	0	0
Reference Telephone Calls	0	0	0	0	0	0	0
Online Reference Questions	0	0	0	0	0	0	0

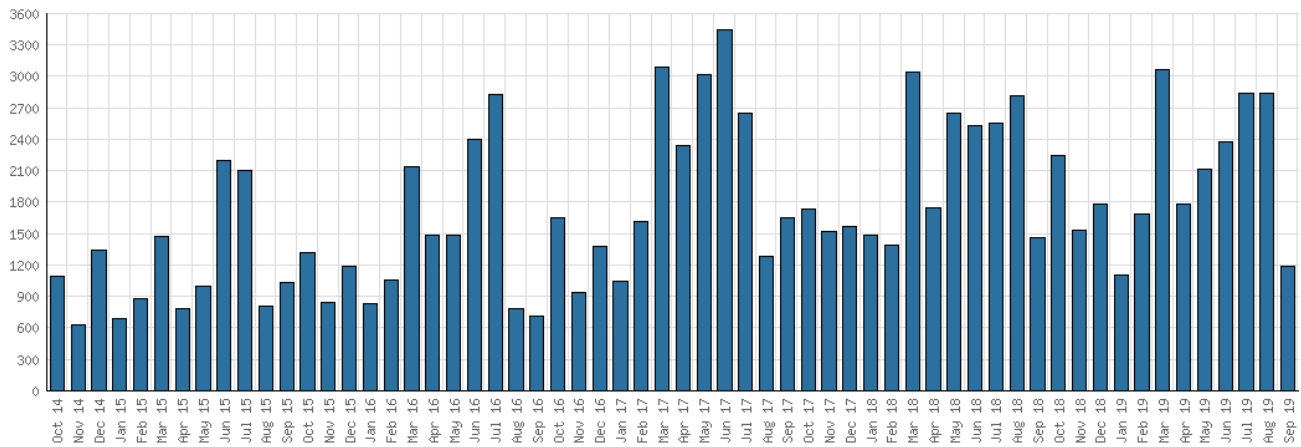
## Selected Graphs

### 5-year Monthly Trends

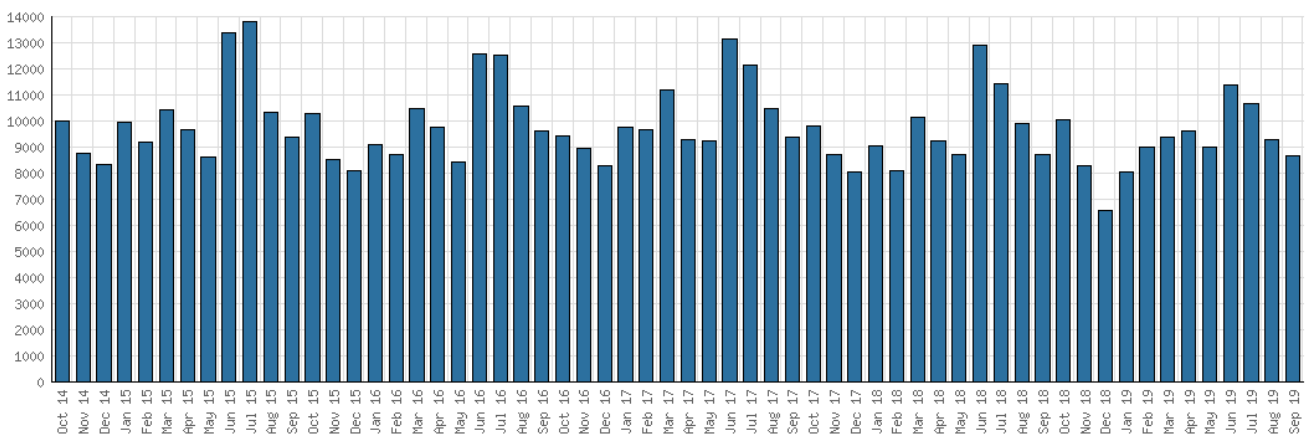
#### District Attendance



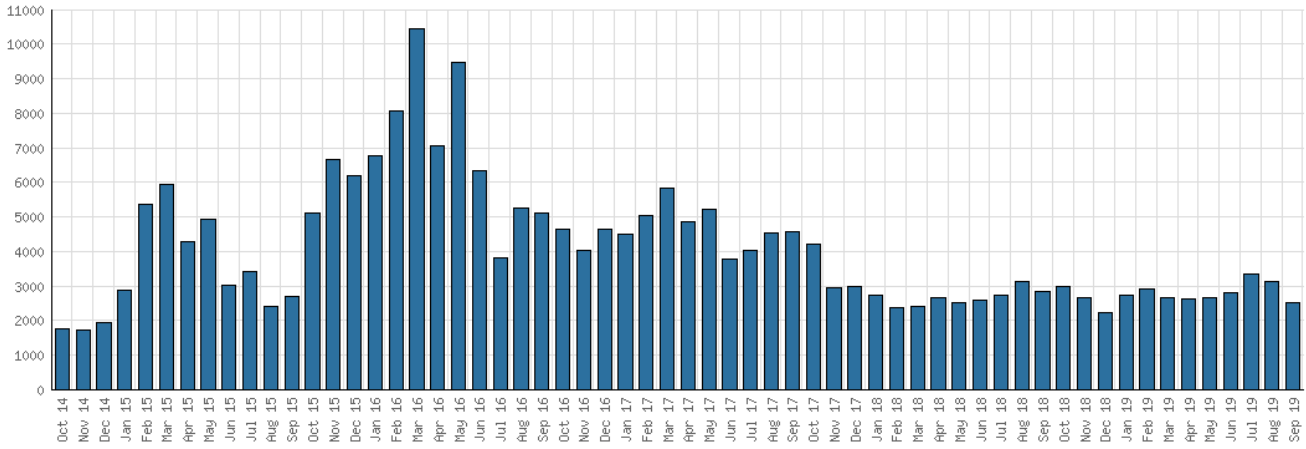
#### District Program Attendance



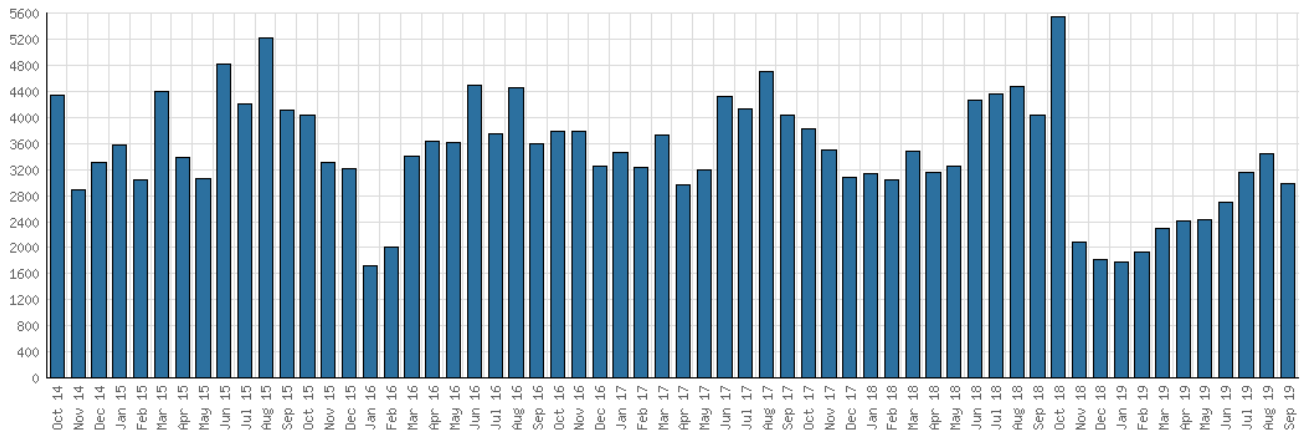
#### District Physical Checkouts



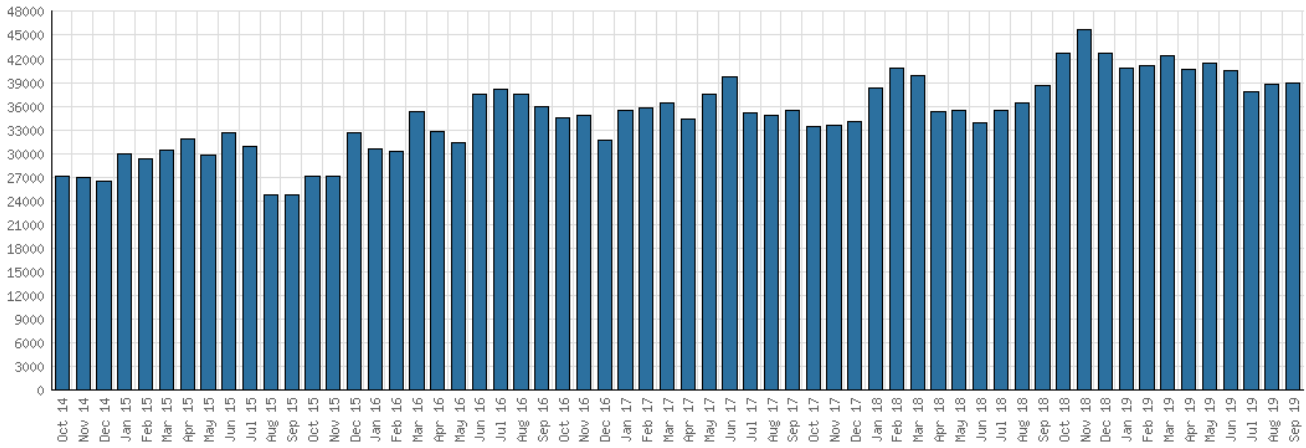
District Digital Usage



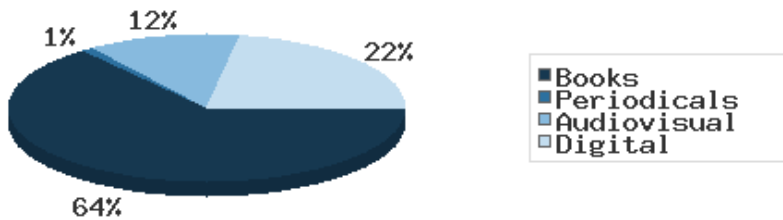
District Use of Library-Provided Computers



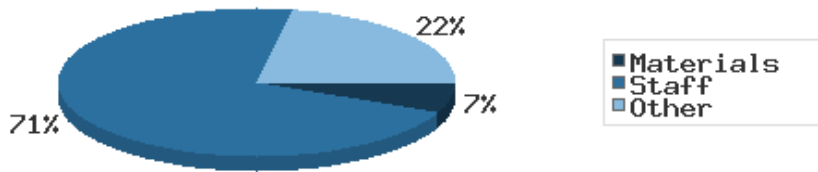
District One-Hour Sessions on Library Wifi



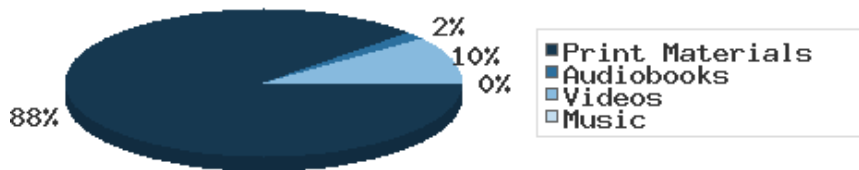
Year-to-Date Materials Expenditures



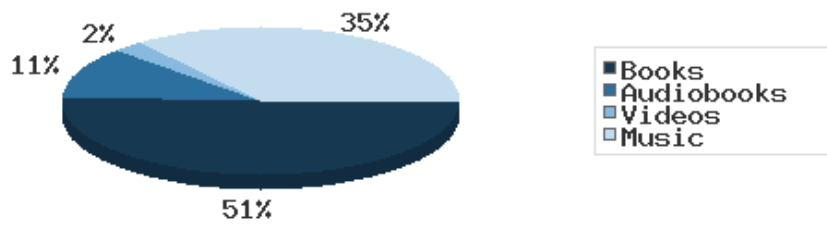
### YTD Expenditures in all Categories



### Physical Collection



### Digital Collection



### YTD Usage Breakdown of Digital Services

