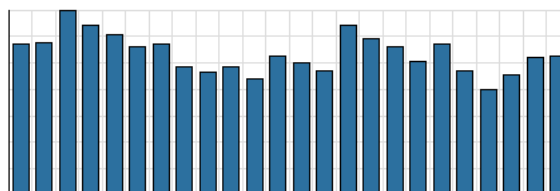


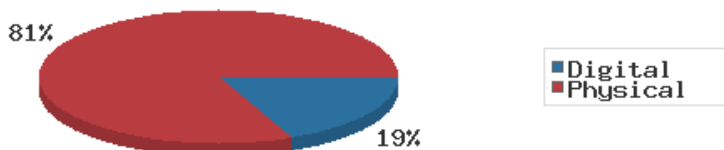
Monthly Stats Brief Narrative

Through March 2019, the number of patrons entering our buildings decreased system-wide compared to this same time year-to-date the previous year. Combined physical and digital use of library materials slightly increased year-to-date compared to 2018. About 11% of our registered cardholders checked out a physical item this past month, while about 2% of registered cardholders checked out a digital item.

District Total Checkouts Over 24 Months



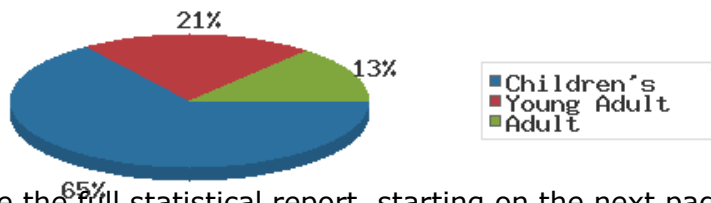
Digital vs. Physical Circulation YTD



Digital usage has comprised about 19% of total materials use year-to-date through March 2019, and digital usage increased from this time in 2018.

In March 2019, BDL patrons saved \$150,333.20 by checking out 13,057 physical items from the library. Our programming for all ages and our digital services further increase the library's value to the community, bringing the total estimated value to \$185,638.62.

Programs Offered in 2019 YTD



Compared to this time year-to-date 2018, the number of programs BDL offered has somewhat decreased. Attendance at programs stayed about the same over this same period.

See the full statistical report, starting on the next page, for details and more graphs. The most up-to-date stats are always available online and interactive at <https://www.BranchDistrictLibrary.org/stats>.

Attendance

March 2019

	BDL Monthly Total	BDL YTD	BDL Year End (Year-over-Year Change)				
			2018	2017	2016	2015	2014
			Attendance	13,356	35,477 (-23%)	191,866 (-1%)	193,922 (-4%)
Hours Open	1,016.50	2,767.00 (-8%)	12,208.00 (+12%)	10,869.15 (-0%)	10,877.50 (+25%)	8,703.00 (+61%)	5,395.00 (+3%)
Number of Hours Scheduled Open Each Week (Tracking Since 1/2018)	251.00		255.00	0.00	0.00	0.00	0.00

Patrons

March 2019

	BDL Monthly Total	BDL YTD	BDL Year End (Year-over-Year Change)				
			2018	2017	2016	2015	2014
			Population in our Service Area (Tracking Since 2018)	44,926	44,926 (avg) (-0%)	44,926 (avg)	0 (avg)
Library Card Holders	20,326	20,276 (avg) (-21%)	20,166 (avg) (-21%)	25,685 (avg) (+3%)	24,899 (avg) (+4%)	23,974 (avg) (+5%)	22,879 (avg) (+5%)
Patrons Who Checked Out a Physical Item	2,183	2,025 (avg) (-3%)	1,896 (avg) (+0%)	1,887 (avg) (-7%)	2,030 (avg) (-2%)	2,069 (avg) (-2%)	2,109 (avg) (-10%)
New Library Card Holders Added	45	173 (-11%)	1,021 (+21%)	844 (-15%)	989 (-9%)	1,086 (-22%)	1,390 (+22%)
In-House Holds Filled for Our Library Card Holders	998	2,727 (-5%)	10,987 (-6%)	11,650 (+12%)	10,407 (+2%)	10,225 (+7%)	9,546 (-16%)
Active Hoopla Users (Began 2016)	305	293 (avg) (+25%)	262 (avg) (+39%)	189 (avg) (+47%)	129 (avg)	0 (avg)	0 (avg)
Active OverDrive Users	203	204 (avg) (+26%)	197 (avg) (+26%)	156 (avg) (+16%)	134 (avg) (-7%)	144 (avg) (+7%)	134 (avg) (+20%)

Physical Collection

Tracking Item-Type Breakdown Since 8/2017

March 2019

	BDL Monthly Total	BDL YTD	BDL Year End (Year-over-Year Change)				
			2018	2017	2016	2015	2014
			Physical Books and All other Print Materials in the Catalog	101,079		100,253 (-0%)	100,293
Physical Audiobooks in the Catalog	1,868		1,881 (+2%)	1,852	0	0	0
Physical Video Materials in the Catalog	10,766		10,579 (+1%)	10,519	0	0	0
Physical Music Recordings in the Catalog	328		337 (-2%)	345	0	0	0
TOTAL Physical Items in the Catalog	114,041		113,050 (+0%)	113,009 (-11%)	126,407 (-4%)	131,432 (+1%)	130,210 (+1%)

Digital Collection

Tracking Since 8/2017

March 2019

	BDL Monthly Total	BDL YTD	BDL Year End (Year-over-Year Change)				
			2018	2017	2016	2015	2014
			Ebooks in All Digital Collections	323,827		306,595 (+33%)	230,178
Audiobooks in All Digital Collections	71,354		71,995 (+36%)	52,833	0	0	0
Video Materials in All Digital Collections	15,068		14,229 (-10%)	15,767	0	0	0
Music Recordings in All Digital Collections	238,478		239,705 (-14%)	280,259	0	0	0
TOTAL of All Digital Collections	648,727		632,524 (+9%)	579,037	0	0	0

Total Collection

Tracking Since 8/2017

March 2019

	BDL Monthly Total	BDL YTD	BDL Year End (Year-over-Year Change)				
			2018	2017	2016	2015	2014
			Combined Physical Items	114,041		113,050 (+0%)	113,009 (-11%)
Combined Digital Collections	648,727		632,524 (+9%)	579,037	0	0	0
TOTAL of all Collections	762,768		745,574 (+8%)	692,046 (+447%)	126,407 (-4%)	131,432 (+1%)	130,210 (+1%)

Use of Physical Items

March 2019

	BDL Monthly Total	BDL YTD	BDL Year End (Year-over-Year Change)				
			2018	2017	2016	2015	2014
			Checkouts of Cataloged Items	9,386	26,450 (-3%)	113,128 (-6%)	120,916 (+2%)
Renewals of Cataloged Items	1,111	3,145 (+4%)	13,607 (-8%)	14,804 (-4%)	15,480 (+0%)	15,434 (-4%)	16,044 (-2%)
Items Used in the Library But Not Checked Out	707	1,205 (+199%)	2,803 (-8%)	3,050 (+126%)	1,351 (+7,011%)	19 (-68%)	60
Checkouts of Uncataloged Items	266	746 (-23%)	3,904 (+38%)	2,839 (-38%)	4,578 (+4%)	4,385 (-5%)	4,601 (-8%)
Requests from BDL Patrons for Items at Other MeLCat Libraries, Actually Fulfilled	952	2,876 (+11%)	9,777 (+20%)	8,169 (+15%)	7,112 (+16%)	6,118 (+8%)	5,677 (-10%)
Requests from Other MeLCat Libraries for Items at BDL, Actually Fulfilled	635	2,192 (+20%)	9,810 (+25%)	7,867 (+11%)	7,068 (+46%)	4,855 (-10%)	5,400 (-42%)
TOTAL Use of Physical Items	13,057	36,614 (+1%)	153,029 (-3%)	157,645 (+2%)	154,184 (+1%)	152,652 (-1%)	154,856 (-12%)

Use of Digital Resources

March 2019

	BDL Monthly Total	BDL YTD	BDL Year End (Year-over-Year Change)				
			2018	2017	2016	2015	2014
			OverDrive Checkouts	953	2,757 (+34%)	9,501 (+21%)	7,823 (+4%)
Hoopla Checkouts (Began 2016)	1,222	3,416 (+7%)	12,796 (+20%)	10,669 (+96%)	5,432	0	0
All Other Digital Services	503	2,179 (-2%)	9,572 (-72%)	34,047 (-46%)	62,788 (+38%)	45,565 (+203%)	15,031 (+26%)
TOTAL Use of Digital Resources	2,678	8,352 (+12%)	31,869 (-39%)	52,539 (-31%)	75,722 (+43%)	52,945 (+145%)	21,646 (+23%)

Total Item Usage

March 2019

	BDL Monthly Total	BDL YTD	BDL Year End (Year-over-Year Change)				
			2018	2017	2016	2015	2014
			Combined Checkouts of Physical Items	13,057	36,614 (+1%)	153,029 (-3%)	157,645 (+2%)
Combined Use of Digital Resources	2,678	8,352 (+12%)	31,869 (-39%)	52,539 (-31%)	75,722 (+43%)	52,945 (+145%)	21,646 (+23%)
TOTAL Uses of All BDL Items	15,735	44,966 (+3%)	184,898 (-12%)	210,184 (-9%)	229,906 (+12%)	205,597 (+16%)	176,502 (-8%)

Cataloging

March 2019

	BDL Monthly Total	BDL YTD	BDL Year End (Year-over-Year Change)				
			2018	2017	2016	2015	2014
Physical Items Added to the Catalog	1,142	2,957 (-2%)	11,056 (+0%)	11,009 (-1%)	11,091 (+29%)	8,582 (+40%)	6,134 (+1%)
Physical Items Deleted from the Catalog	1,106	1,964 (-53%)	10,941 (-55%)	24,366 (+53%)	15,968 (+84%)	8,668 (+40%)	6,186 (+30%)

Reference Questions

March 2019

	BDL Monthly Total	BDL YTD	BDL Year End (Year-over-Year Change)				
			2018	2017	2016	2015	2014
General Reference Questions in Person	541	1,586 (-6%)	6,641 (-12%)	7,537 (+20%)	6,285 (+124%)	2,806 (-0%)	2,809 (-22%)
Questions via Telephone Calls	325	982 (-20%)	3,866 (-24%)	5,079 (+10%)	4,622 (+60%)	2,885 (+0%)	2,872 (+18%)
Reference Questions Delivered Online	30	81 (+98%)	152 (-35%)	233 (-23%)	304 (+34%)	227 (+77%)	128 (+184%)
In-Person Questions on Computer or Internet Use	707	1,801 (+6%)	7,068 (-3%)	7,285 (+11%)	6,568 (+18%)	5,551 (+36%)	4,076 (+9%)
In-Person Questions about Our Online Databases	31	70 (-19%)	409 (+13%)	363 (+114%)	170 (+85%)	92 (-24%)	121 (-41%)
In-Person Tax Form Questions	55	256 (-41%)	518 (+5%)	493 (+4%)	473 (-18%)	579 (+3%)	560 (+5%)
TOTAL of All Reference Questions	1,689	4,776 (-8%)	18,654 (-11%)	20,990 (+14%)	18,422 (+52%)	12,140 (+15%)	10,566 (-0%)

Notary Services

Began 9/2017 at Coldwater Only

March 2019

	BDL Monthly Total	BDL YTD	BDL Year End (Year-over-Year Change)				
			2018	2017	2016	2015	2014
Patrons Who Used our Free Notary Services	6	17 (+6%)	66 (+371%)	14	0	0	0
Documents Notarized	19	38 (+153%)	67 (+253%)	19	0	0	0

MeLCat

March 2019

	BDL Monthly Total	BDL YTD	BDL Year End (Year-over-Year Change)				
			2018	2017	2016	2015	2014
Requests from BDL Patrons for Items at Other MeLCat Libraries	1,027	3,038 (+10%)	10,462 (+20%)	8,699 (+14%)	7,643 (+5%)	7,280 (+9%)	6,708 (-8%)
Requests from BDL Patrons for Items at Other MeLCat Libraries, Actually Fulfilled	952	2,876 (+11%)	9,777 (+20%)	8,169 (+15%)	7,112 (+16%)	6,118 (+8%)	5,677 (-10%)
Requests from Other MeLCat Libraries for Items at BDL	727	2,451 (+29%)	10,296 (+29%)	7,994 (+13%)	7,096 (+18%)	5,989 (-10%)	6,619 (-33%)
Requests from Other MeLCat Libraries for Items at BDL, Actually Fulfilled	635	2,192 (+20%)	9,810 (+25%)	7,867 (+11%)	7,068 (+46%)	4,855 (-10%)	5,400 (-42%)

Programs Held

March 2019

	BDL Monthly Total	BDL YTD	BDL Year End (Year-over-Year Change)				
			2018	2017	2016	2015	2014
Juvenile Programs Held	101	238 (+5%)	730 (+1%)	720 (+19%)	604 (+5%)	575 (+19%)	482 (+3%)
Young Adult Programs Held	45	77 (-39%)	338 (+41%)	239 (+47%)	163 (+8%)	151 (+20%)	126 (+157%)
Adult Programs Held	16	39 (+8%)	136 (-7%)	146 (-34%)	220 (+40%)	157 (+26%)	125 (+44%)
Juvenile Summer Reading Events Held	0	0	114 (+20%)	95 (+7%)	89 (+6%)	84 (+8%)	78
Young Adult Summer Reading Events Held	0	0	49 (-14%)	57 (+97%)	29 (-66%)	85 (+183%)	30
Adult Summer Reading Events Held	0	0	3	0	3 (-40%)	5 (+25%)	4
Computer Classes Held	8	10 (+25%)	20 (-9%)	22 (+57%)	14 (-36%)	22 (-8%)	24
TOTAL of All Programs	170	364 (-9%)	1,390 (+9%)	1,279 (+14%)	1,122 (+4%)	1,079 (+24%)	869 (+43%)

Program Attendance

March 2019

	BDL Monthly Total	BDL YTD	BDL Year End (Year-over-Year Change)				
			2018	2017	2016	2015	2014
Attendees at Juvenile Programs	2,616	4,845 (+5%)	15,725 (+2%)	15,351 (+48%)	10,371 (+23%)	8,415 (+7%)	7,857 (-11%)
Attendees at Young Adult Programs	297	562 (-31%)	3,218 (-15%)	3,806 (+276%)	1,011 (+14%)	884 (+38%)	641 (+36%)
Attendees at Adult Programs	143	431 (-8%)	1,970 (-0%)	1,979 (-3%)	2,048 (-5%)	2,157 (+65%)	1,310 (+18%)
Attendees at Juvenile Summer Reading Events	0	0	3,864 (+24%)	3,116 (-20%)	3,904 (+56%)	2,499 (-21%)	3,159
Attendees at Young Adult Summer Reading Events	0	0	333 (-50%)	671 (+127%)	295 (+14%)	259 (-16%)	307
Attendees at Adult Summer Reading Events	0	0	85	0	21 (-73%)	77 (-31%)	111
Attendees at Computer Classes	9	11 (+38%)	20 (-5%)	21 (+75%)	12 (-59%)	29 (+4%)	28
TOTAL of All Program Attendance	3,065	5,849 (-1%)	25,215 (+1%)	24,944 (+41%)	17,662 (+23%)	14,320 (+7%)	13,413 (+28%)

Summer Reading Overview

March 2019

	BDL Monthly Total	BDL YTD	BDL Year End (Year-over-Year Change)				
			2018	2017	2016	2015	2014
Juveniles Signed Up for Summer Reading Program	0	0	747 (-35%)	1,153 (+19%)	967 (+13%)	859	0
Young Adults Signed up for Summer Reading Program	0	0	378 (-2%)	385 (+241%)	113 (-64%)	311	0
Adults Signed Up for Summer Reading Program	0	0	248 (+112%)	117 (+36%)	86 (+1%)	85	0
Juveniles who Completed Summer Reading Program	0	0	260 (-50%)	518 (+13%)	459 (-10%)	512	0
Young Adults who Completed Summer Reading Program	0	0	135 (-50%)	268 (+332%)	62 (-49%)	122	0
Adults who Completed Summer Reading Program	0	0	165 (+72%)	96 (+60%)	60 (+7%)	56	0
Juvenile Summer Reading Events Held	0	0	114 (+20%)	95 (+7%)	89 (+6%)	84 (+8%)	78
Young Adult Summer Reading Events Held	0	0	49 (-14%)	57 (+97%)	29 (-66%)	85 (+183%)	30
Adult Summer Reading Events Held	0	0	3	0	3 (-40%)	5 (+25%)	4
Attendees at Juvenile Summer Reading Events	0	0	3,864 (+24%)	3,116 (-20%)	3,904 (+56%)	2,499 (-21%)	3,159
Attendees at Young Adult Summer Reading Events	0	0	333 (-50%)	671 (+127%)	295 (+14%)	259 (-16%)	307
Attendees at Adult Summer Reading Events	0	0	85	0	21 (-73%)	77 (-31%)	111

Summer Reading Program Signups

March 2019

	BDL Monthly Total	BDL YTD	BDL Year End (Year-over-Year Change)				
			2018	2017	2016	2015	2014
Juveniles Signed Up for Summer Reading Program	0	0	747 (-35%)	1,153 (+19%)	967 (+13%)	859	0
Young Adults Signed up for Summer Reading Program	0	0	378 (-2%)	385 (+241%)	113 (-64%)	311	0
Adults Signed Up for Summer Reading Program	0	0	248 (+112%)	117 (+36%)	86 (+1%)	85	0
TOTAL Summer Reading Program Signups	0	0	1,373 (-17%)	1,655 (+42%)	1,166 (-7%)	1,255	0

Summer Reading Program Completions

March 2019

	BDL Monthly Total	BDL YTD	BDL Year End (Year-over-Year Change)				
			2018	2017	2016	2015	2014
Juveniles who Completed Summer Reading Program	0	0	260 (-50%)	518 (+13%)	459 (-10%)	512	0
Young Adults who Completed Summer Reading Program	0	0	135 (-50%)	268 (+332%)	62 (-49%)	122	0
Adults who Completed Summer Reading Program	0	0	165 (+72%)	96 (+60%)	60 (+7%)	56	0
TOTAL Summer Reading Program Completions	0	0	560 (-37%)	882 (+52%)	581 (-16%)	690	0

Library-Provided Computer Services

March 2019

	BDL Monthly Total	BDL YTD	BDL Year End (Year-over-Year Change)				
			2018	2017	2016	2015	2014
One-hour sessions on Library Wifi	42,422	124,229 (+4%)	465,219 (+9%)	425,714 (+4%)	410,437 (+17%)	351,423 (+18%)	298,098 (+37%)
Desktop, Laptop, and Tablet Computers Available for Public Use	88		89 (+22%)	73	73	73	73
Sessions on Library-Provided Computers	2,678	7,103 (-26%)	45,687 (+3%)	44,181 (+6%)	41,513 (-11%)	46,405 (+6%)	43,756 (-6%)
Hours Library-Provided Computers Used (Tracking Since 2018)	1,788.41	4,858.02 (+1%)	24,701.55	0.00	0.00	0.00	0.00
Desktop, Laptop, and Tablet Computers Available for Staff Use	52		50 (+22%)	41	41	41	41

Website Stats

March 2019

	BDL Monthly Total	BDL YTD	BDL Year End (Year-over-Year Change)				
			2018	2017	2016	2015	2014
Monthly Website Sessions	4,983	13,764 (+29%)	45,594 (-38%)	73,326 (-2%)	75,139 (+3%)	72,706 (+6%)	68,773 (-22%)
Monthly Website Page Views	11,715	32,885 (+22%)	118,634 (-33%)	177,799 (-2%)	182,084 (+7%)	169,630 (+4%)	163,277 (-8%)

Faxes, Prints, and Sales

March 2019

	BDL Monthly Total	BDL YTD	BDL Year End (Year-over-Year Change)				
			2018	2017	2016	2015	2014
Fax Pages Received	1	22 (-74%)	419 (+61%)	260 (+19%)	219 (+27%)	173 (+3%)	168 (+20%)
Fax Pages Sent	853	2,162 (+2%)	9,249 (+138%)	3,879 (+123%)	1,741 (-7%)	1,882 (+39%)	1,353 (+1%)
Free Prints for Job Seekers	331	841 (-6%)	3,631 (+16%)	3,128 (+9%)	2,878 (+23%)	2,335 (-23%)	3,024 (-21%)
Black and White Patron Prints (Tracking Since 6/2016)	6,173	17,578 (-23%)	81,016 (+7%)	75,606 (+113%)	35,561	0	0
Color Patron Prints (Tracking Since 6/2016)	1,454	2,909 (+19%)	12,285 (+20%)	10,253 (+154%)	4,036	0	0
Flash Drives Sold (Tracking Since 6/2016)	7	12 (-14%)	41 (-27%)	56 (+4%)	54	0	0
Earbuds Sold (Tracking Since 6/2016)	41	111 (-6%)	538 (+29%)	416 (+151%)	166	0	0

Fines and Fees

Overdue Fines Dropped in 2017

March 2019

	BDL Monthly Total	BDL YTD	BDL Year End (Year-over-Year Change)				
			2018	2017	2016	2015	2014
Fines and Fees Payments Received	\$ 439.20	\$ 902.28 (+24%)	\$ 2,412.73 (-68%)	\$ 7,628.31 (-24%)	\$ 10,062.96 (-30%)	\$ 14,448.76 (-3%)	\$ 14,827.36 (-4%)
Outstanding Fines and Fees	\$ 53,975.89		55,850.27 (-34%)	84,232.33 (-63%)	228,102.90 (+3%)	221,076.26 (+5%)	209,842.19 (+4%)

Debt Collections
Unique Management Services, Inc.
Tracking Since 2014

March 2019

	BDL Monthly Total	BDL YTD	BDL Year End (Year-over-Year Change)				
			2018	2017	2016	2015	2014
			Fine Payments as a Result of Collection Agency's Efforts	\$ 84.00	\$ 84.00 (-42%)	\$ 4,183.45 (+1,727%)	\$ 229.00 (-76%)
Library Materials Returned as a Result of Collection Agency's Efforts	\$ 0.00	\$ 0.00	\$ 462.00 (-48%)	\$ 888.95 (-33%)	\$ 1,317.93 (-2%)	\$ 1,346.89 (-28%)	\$ 1,864.69
What We Paid Collection Agency for Their Services	\$ 0.00	\$ 60.50 (-30%)	\$ 528.66 (-5%)	\$ 558.08 (-45%)	\$ 1,022.23 (-3%)	\$ 1,051.42 (+40%)	\$ 753.88

Value to Our Service Area

Visit <https://www.BranchDistrictLibrary.org/value>
to learn how we determine these numbers.

March 2019

	BDL Monthly Total	BDL YTD	BDL Year End (Year-over-Year Change)				
			2018	2017	2016	2015	2014
			Value from Physical Item Checkouts	\$ 150,333.20	\$ 438,368.90 (-4%)	\$ 1,888,907.75 (-12%)	\$ 2,135,671.28 (+0%)
Value from Attending Programs (Tracking Since 1/2018)	\$ 15,325.00	\$ 27,530.00 (-6%)	\$ 125,795.00	\$ 0.00	\$ 0.00	\$ 0.00	\$ 0.00
Value from Fax Service (Tracking Since 1/2018)	\$ 854.00	\$ 2,184.00 (-1%)	\$ 9,668.00	\$ 0.00	\$ 0.00	\$ 0.00	\$ 0.00
Value from Employment Prints (Tracking Since 1/2018)	\$ 49.65	\$ 126.15 (-6%)	\$ 544.65	\$ 0.00	\$ 0.00	\$ 0.00	\$ 0.00
Value from Notary Services (Tracking Since 1/2018)	\$ 30.00	\$ 85.00 (+6%)	\$ 330.00	\$ 0.00	\$ 0.00	\$ 0.00	\$ 0.00
Value from Digital Services (Tracking Since 1/2018)	\$ 10,712.00	\$ 33,408.00 (+12%)	\$ 127,476.00	\$ 0.00	\$ 0.00	\$ 0.00	\$ 0.00
Value from Using Library Computers (Tracking Since 1/2018)	\$ 5,365.23	\$ 14,574.06 (+1%)	\$ 74,104.66	\$ 0.00	\$ 0.00	\$ 0.00	\$ 0.00
Value from Using Library Wifi (Tracking Since 1/2018)	\$ 2,969.54	\$ 8,696.03 (+4%)	\$ 32,565.33	\$ 0.00	\$ 0.00	\$ 0.00	\$ 0.00
TOTAL Value of Free Library Services	\$ 185,638.62	\$ 524,972.14 (-3%)	\$ 2,259,391.39 (+6%)	\$ 2,135,671.28 (+0%)	\$ 2,132,387.79 (-2%)	\$ 2,167,140.68 (+0%)	\$ 2,167,024.48 (-9%)

Materials Expenditures

Tracking since 2018

March 2019

	BDL Monthly Total	BDL YTD	BDL Year End (Year-over-Year Change)				
			2018	2017	2016	2015	2014
Amount Spent on Books	\$ 9,486.32	\$ 26,112.44 (+19%)	\$ 93,763.50	\$ 0.00	\$ 0.00	\$ 0.00	\$ 0.00
Amount Spent on Periodicals	\$ 40.00	\$ 257.00 (-58%)	\$ 7,085.59	\$ 0.00	\$ 0.00	\$ 0.00	\$ 0.00
Amount Spent on Audiovisual Materials	\$ 1,197.60	\$ 4,146.04 (-6%)	\$ 17,998.47	\$ 0.00	\$ 0.00	\$ 0.00	\$ 0.00
Amount Spent on Digital Resources	\$ 2,628.98	\$ 9,518.92 (+6%)	\$ 43,798.90	\$ 0.00	\$ 0.00	\$ 0.00	\$ 0.00
TOTAL Spent on All Library Materials	\$ 13,352.90	\$ 40,034.40 (+11%)	\$ 162,646.46	\$ 0.00	\$ 0.00	\$ 0.00	\$ 0.00

Other Expenditures

Tracking since 2018

March 2019

	BDL Monthly Total	BDL YTD	BDL Year End (Year-over-Year Change)				
			2018	2017	2016	2015	2014
Total Materials Expenditures	\$ 13,352.90	\$ 40,034.40 (+11%)	\$ 162,646.46	\$ 0.00	\$ 0.00	\$ 0.00	\$ 0.00
Total Staff Expenditures	\$ 114,505.73	\$ 356,220.74 (+1%)	\$ 1,469,560.33	\$ 0.00	\$ 0.00	\$ 0.00	\$ 0.00
Expenditures in other categories	\$ 28,782.73	\$ 72,038.89 (-22%)	\$ 422,747.74	\$ 0.00	\$ 0.00	\$ 0.00	\$ 0.00
TOTAL Expenditures in all Categories	\$ 156,641.36	\$ 468,294.03 (-3%)	\$ 2,054,954.53	\$ 0.00	\$ 0.00	\$ 0.00	\$ 0.00

Staffing

March 2019

	BDL Monthly Total	BDL YTD	BDL Year End (Year-over-Year Change)				
			2018	2017	2016	2015	2014
Total BDL Staff	37	39 (avg)	40 (avg) (+5%)	37 (avg) (+9%)	34 (avg) (+17%)	29 (avg) (-3%)	30 (avg) (-6%)
BDL Staff with MLS Degree	5	6 (avg) (-17%)	6 (avg) (+20%)	5 (avg) (+150%)	3 (avg)	2 (avg)	2 (avg) (-33%)
Worked Full-Time Equivalents	27.05	27.85 (avg) (+4%)	26.92 (avg) (+8%)	24.91 (avg) (+41%)	17.90 (avg) (+13%)	15.75 (avg) (-6%)	16.81 (avg) (-16%)
Hours of Specialized Training for Staff (Tracking Since 1/2019)	7	67	0	0	0	0	0
Hours Volunteers Worked at the Library (Tracking Since 1/2019)	109	418	0	0	0	0	0

Outreach Services

Began 2018

March 2019

	BDL Monthly Total	BDL YTD	BDL Year End (Year-over-Year Change)				
			2018	2017	2016	2015	2014
Number of Patrons Served by Outreach Services	13	31 (+41%)	76 (+2,433%)	3	0	0	0
Number of Items Delivered to Outreach Patrons	64	107 (-39%)	606 (+2,231%)	26	0	0	0

Coldwater Branch Heritage Room

Stats part of Coldwater Branch totals above; shown here for convenience.

March 2019

	Heritage Room	BDL YTD	BDL Year End (Year-over-Year Change)				
			2018	2017	2016	2015	2014
Heritage Room Attendance	27	92 (-51%)	736 (+12%)	658 (-7%)	705 (+51%)	468 (+50%)	312
In-Person Reference Questions	31	89 (-47%)	708 (+29%)	550 (+664%)	72 (+140%)	30 (-27%)	41 (+71%)
Reference Telephone Calls	25	60 (-37%)	277 (-36%)	433 (+15%)	376 (+83%)	206 (+145%)	84
Online Reference Questions	8	23 (-8%)	60 (-5%)	63 (-24%)	83 (+8%)	77 (+79%)	43

Coldwater Branch Kids' Place

Stats part of Coldwater Branch totals above; shown here for convenience.
Tracking separately since April 2019.

March 2019

	Kids' Place	BDL YTD	BDL Year End (Year-over-Year Change)				
			2018	2017	2016	2015	2014
Kids' Place Attendance	0	0	0	0	0	0	0
In-Person Reference Questions	0	0	0	0	0	0	0
Reference Telephone Calls	0	0	0	0	0	0	0
Online Reference Questions	0	0	0	0	0	0	0

Coldwater Branch Teen Space

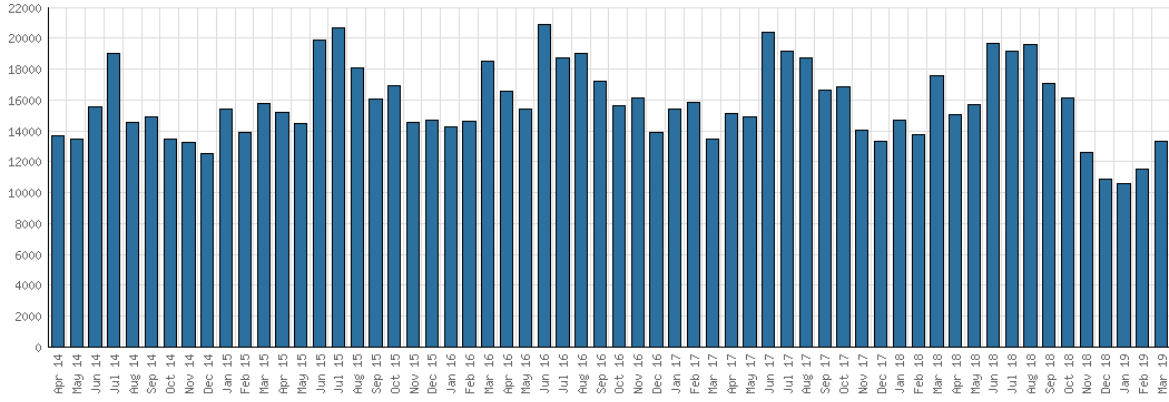
Stats part of Coldwater Branch totals above; shown here for convenience.
Tracking separately since April 2019.

March 2019

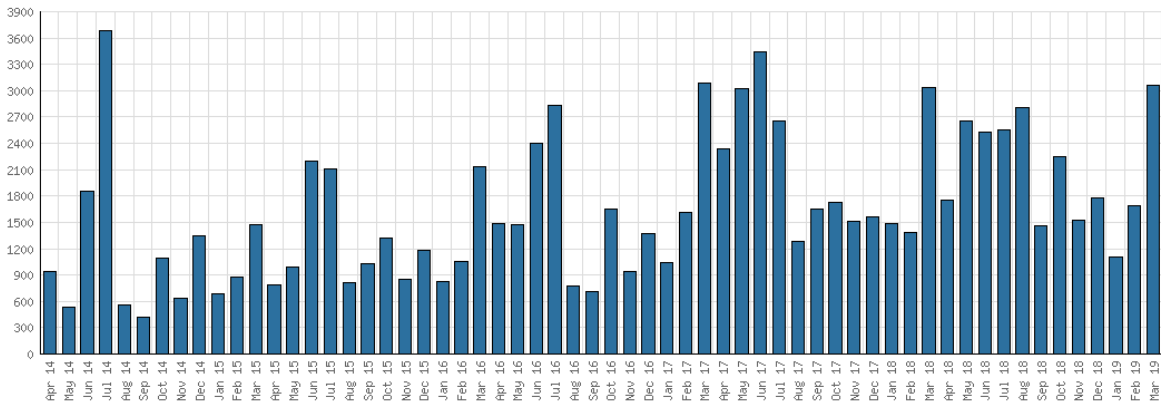
	Teen Space	BDL YTD	BDL Year End (Year-over-Year Change)				
			2018	2017	2016	2015	2014
Teen Space Attendance	0	0	0	0	0	0	0
In-Person Reference Questions	0	0	0	0	0	0	0
Reference Telephone Calls	0	0	0	0	0	0	0
Online Reference Questions	0	0	0	0	0	0	0

Selected Graphs
5-year Monthly Trends

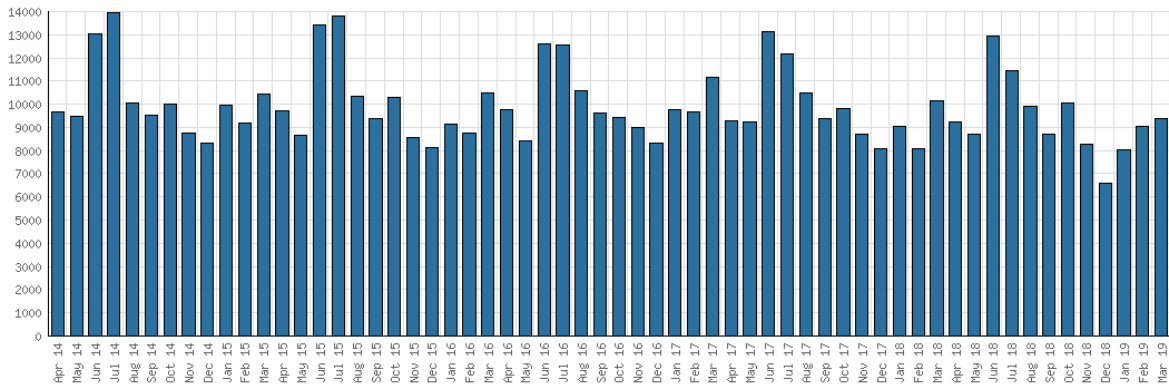
District Attendance



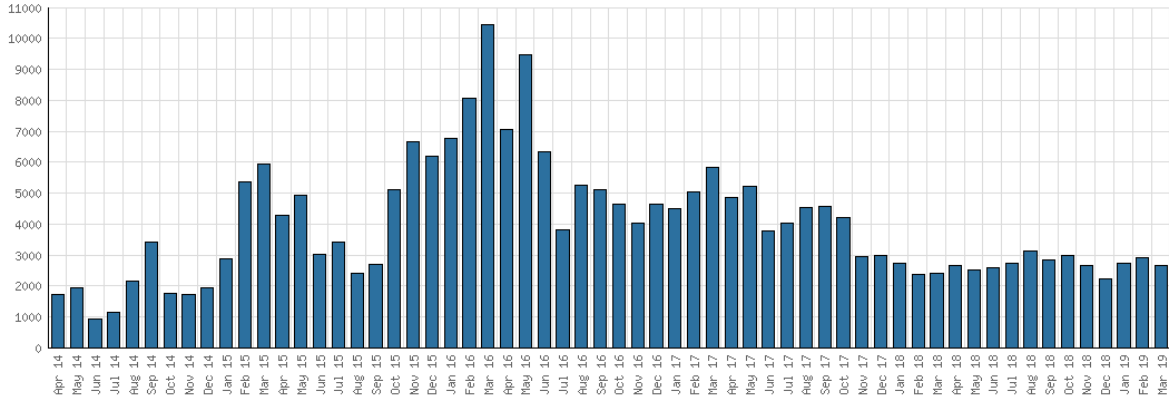
District Program Attendance



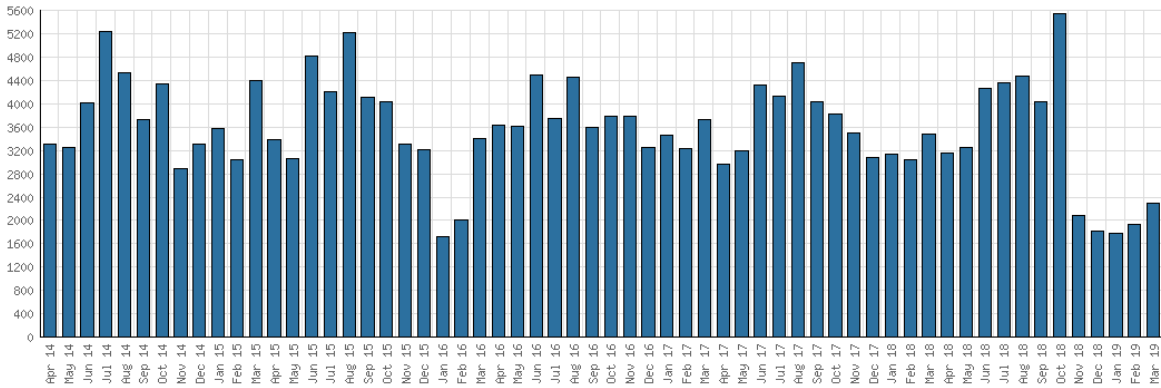
District Physical Checkouts



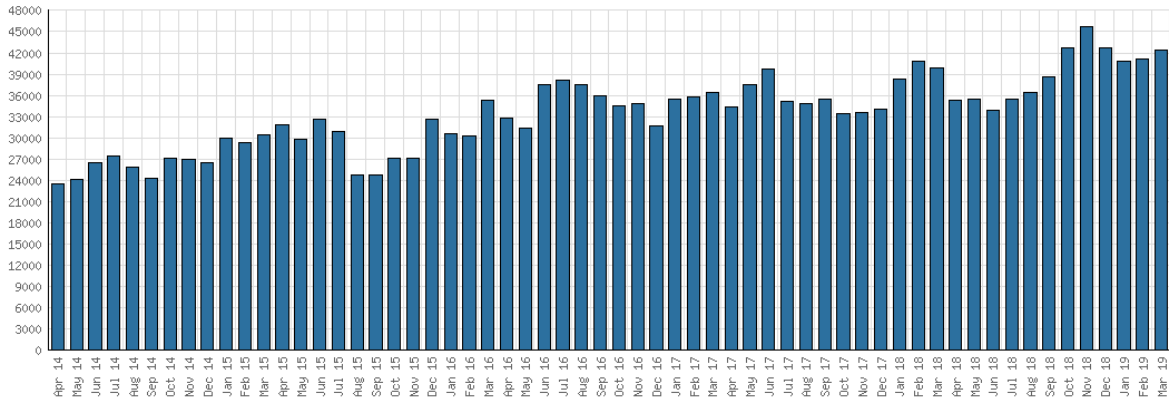
District Digital Usage



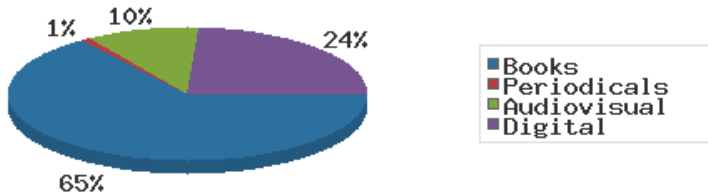
District Use of Library-Provided Computers



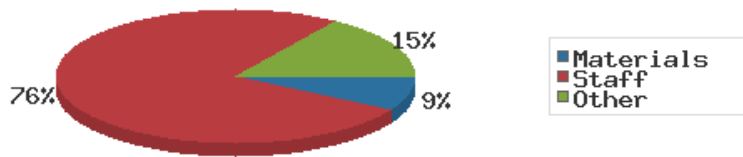
District One-Hour Sessions on Library Wifi



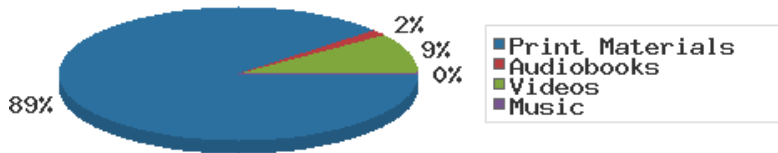
Year-to-Date Materials Expenditures



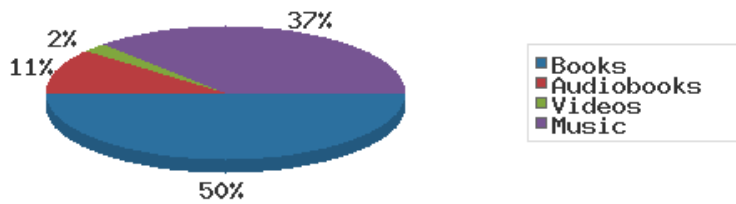
YTD Expenditures in all Categories



Physical Collection



Digital Collection



YTD Usage Breakdown of Digital Services

